

**CITY OF BOYNTON BEACH MUNICIPAL FIREFIGHTERS'
PENSION TRUST FUND**

**FLORIDA DIVISION OF RETIREMENT
PREMIUM TAX MONEY
September 30, 2021**

**CITY OF BOYNTON BEACH MUNICIPAL FIREFIGHTERS’
PENSION TRUST FUND**

**FLORIDA DIVISION OF RETIREMENT
PREMIUM TAX MONEY
September 30, 2021**

TABLE OF CONTENTS

Schedule of City Addresses Not in the State’s Point Match System	1
Schedule of Addresses Not in the State’s Point Match System Not in the City’s Master List of Addresses.....	36
Recommendations.....	66
State Excise Tax on Boynton’s Property Insurance Premiums - Overview	68
Firefighters’ Premium Tax Distribution History.....	72
Firefighters’ 2020 Premium Tax Distribution Calculation	76
Florida Department of Revenue Insurance Premium Taxes And Fees Return, Form DR-908.....	78
Florida Statutes	92

Schedule of City Addresses
Not in the State's Point Match System (1,635)

**CITY OF BOYNTON BEACH MUNICIPAL FIREFIGHTERS'
PENSION TRUST FUND**

Schedule of City Addresses Not in the State's Point Match System

NUMBER	PREDIR	STNAME	STSUFFIX	ZIP
0	NE	10TH	AVE	33435
100	NE	10TH	AVE	33435
106	NW	10TH	AVE	33435
117	NW	10TH	AVE	33435
121	NW	10TH	AVE	33435
123	NW	10TH	AVE	33435
128	NW	10TH	AVE	33435
132	NW	10TH	AVE	33435
137	NE	10TH	AVE	33435
153	NW	10TH	AVE	33435
207	NE	10TH	AVE	33435
208	NE	10TH	AVE	33435
209	NE	10TH	AVE	33435
215	NE	10TH	AVE	33435
221	NE	10TH	AVE	33435
222	NW	10TH	AVE	33435
224	NE	10TH	AVE	33435
227	NE	10TH	AVE	33435
228	NE	10TH	AVE	33435
234	NW	10TH	AVE	33435
305	NE	10TH	AVE	33435
307	NE	10TH	AVE	33435
308	NE	10TH	AVE	33435
309	NW	10TH	AVE	33435
314	NW	10TH	AVE	33435
315	NE	10TH	AVE	33435
317	NE	10TH	AVE	33435
318	NE	10TH	AVE	33435
323	NE	10TH	AVE	33435
324	NE	10TH	AVE	33435
325	NE	10TH	AVE	33435
336	NE	10TH	AVE	33435
338	NE	10TH	AVE	33435
339	NE	10TH	AVE	33435
404	NE	10TH	AVE	33435
409	NE	10TH	AVE	33435
410	NE	10TH	AVE	33435
414	NW	10TH	AVE	33435
417	NE	10TH	AVE	33435
420	NE	10TH	AVE	33435
425	NE	10TH	AVE	33435
429	NW	10TH	AVE	33435
430	NW	10TH	AVE	33435
505	NW	10TH	AVE	33435
516	NW	10TH	AVE	33435
517	NW	10TH	AVE	33435

**CITY OF BOYNTON BEACH MUNICIPAL FIREFIGHTERS'
PENSION TRUST FUND**

Schedule of City Addresses Not in the State's Point Match System (Continued)

518	NW	10TH	AVE	33435
519	NW	10TH	AVE	33435
520	NW	10TH	AVE	33435
521	NW	10TH	AVE	33435
522	NW	10TH	AVE	33435
525	NW	10TH	AVE	33435
526	NW	10TH	AVE	33435
527	NW	10TH	AVE	33435
530	NW	10TH	AVE	33435
531	NW	10TH	AVE	33435
533	NW	10TH	AVE	33435
534	NW	10TH	AVE	33435
538	NW	10TH	AVE	33435
541	NW	10TH	AVE	33435
544	NW	10TH	AVE	33435
545	NW	10TH	AVE	33435
548	NW	10TH	AVE	33435
550	NW	10TH	AVE	33435
551	NW	10TH	AVE	33435
555	NW	10TH	AVE	33435
556	NW	10TH	AVE	33435
560	NW	10TH	AVE	33435
729	NE	10TH	AVE	33435
743	NE	10TH	AVE	33435
900	NW	10TH	ST	33426
902	NW	10TH	ST	33426
915	NW	10TH	ST	33426
0	SW	11TH	AVE	33435
144	NW	11TH	AVE	33435
148	NW	11TH	AVE	33435
152	NW	11TH	AVE	33435
229	NE	11TH	AVE	33435
431	NW	11TH	AVE	3.34E+08
433	NW	11TH	AVE	33435
527	NW	11TH	AVE	33435
560	NW	11TH	AVE	33435
2400	SW	11TH	ST	33426
129	NE	12TH	AVE	33435
216	NE	12TH	AVE	33435
500	NW	12TH	AVE	3.34E+08
505	NW	12TH	AVE	33435
600	NE	12TH	AVE	33435
601	NE	12TH	AVE	33435
734	NE	12TH	TER	33435
0	NE	13TH	AVE	33435
141	NW	13TH	AVE	33435
216	NW	13TH	AVE	33435

**CITY OF BOYNTON BEACH MUNICIPAL FIREFIGHTERS'
PENSION TRUST FUND**

Schedule of City Addresses Not in the State's Point Match System (Continued)

315	NE	13TH	AVE	33435
341	NE	13TH	AVE	33435
504	NW	13TH	AVE	33435
506	NW	13TH	AVE	33435
508	NW	13TH	AVE	33435
700	NW	13TH	AVE	33426
846	NW	13TH	AVE	33426
900	NW	13TH	AVE	33426
1817	SW	13TH	AVE	33426
2002	SW	13TH	AVE	33426
2106	SW	14TH	AVE	33426
3030	SW	14TH	ST	3.34E+08
3311	SW	14TH	PL	33426
391	NW	16TH	CT	33435
1300	SW	16TH	ST	33426
1901	SW	18TH	ST	33426
100	NW	19TH	AVE	33435
540	NE	19TH	AVE	33435
541	NE	19TH	AVE	33435
2201	SW	19TH	AVE	33426
0	SW	1ST	CT	33426
6	NW	1ST	ST	3.34E+08
100	NW	1ST	ST	33435
104	NW	1ST	ST	33435
110	NE	1ST	AVE	33435
150	NW	1ST	ST	33435
155	NE	1ST	ST	33435
200	SW	1ST	CT	33435
200	NE	1ST	ST	33435
201	NE	1ST	ST	33435
218	NW	1ST	AVE	33435
300	SW	1ST	CT	33435
303	NW	1ST	ST	33435
305	NW	1ST	ST	33435
318	NE	1ST	ST	33435
400	SW	1ST	CT	33435
410	SW	1ST	AVE	33435
411	NW	1ST	ST	33435
500	SW	1ST	CT	33435
633	NW	1ST	AVE	33426
701	SW	1ST	CT	33435
743	NE	1ST	AVE	33435
800	NW	1ST	ST	33435
802	SW	1ST	CT	33435
807	NW	1ST	ST	33435
809	NW	1ST	ST	33435
811	NW	1ST	ST	33435

**CITY OF BOYNTON BEACH MUNICIPAL FIREFIGHTERS'
PENSION TRUST FUND**

Schedule of City Addresses Not in the State's Point Match System (Continued)

827	NW	1ST	AVE	33426
1112	SE	1ST	ST	3.34E+08
1300	NW	1ST	ST	3.34E+08
1400	SW	1ST	ST	33435
1403	NW	1ST	ST	33435
1407	NW	1ST	ST	33435
1600	SW	1ST	ST	33435
1700	SW	1ST	ST	33435
1800	SW	1ST	ST	33435
1900	SW	1ST	ST	33435
2152	NE	1ST	ST	33435
2241	NW	1ST	ST	33435
2524	NE	1ST	CT	33435
2530	NE	1ST	CT	33435
2601	NE	1ST	CT	33435
2898	NE	1ST	CT	33435
3404	SE	1ST	ST	33435
701	NE	20TH	LN	33435
414	SE	21ST	AVE	33435
500	SW	23RD	AVE	33435
510	SE	23RD	AVE	33435
514	SE	23RD	AVE	33435
520	SE	23RD	AVE	33435
1300	SW	23RD	AVE	33426
1318	SW	23RD	ST	33426
2300	SW	23RD CRANBROOK	DR	33436
0	SW	24TH	AVE	33426
1901	SW	24TH	CIR	3.34E+08
2001	SW	24TH	CIR	3.34E+08
108	SE	25TH	AVE	33435
238	SE	25TH	AVE	33435
1445	SW	25TH	PL	33426
138	SE	27TH	CT	33435
718	SW	27TH	PL	33435
1350	SW	27TH	AVE	33426
1470	SW	27TH	AVE	33426
2600	SE	28TH	CIR	33435
2631	SE	28TH	CIR	33435
312	NE	2ND	ST	33435
401	SE	2ND	AVE	33435
422	NE	2ND	ST	33435
425	SW	2ND	AVE	33435
1706	NE	2ND	CT	33435
1708	NE	2ND	CT	33435
2575	SE	2ND	ST	33435
2699	SE	2ND	ST	33435
3230	SE	2ND	ST	33435

**CITY OF BOYNTON BEACH MUNICIPAL FIREFIGHTERS'
PENSION TRUST FUND**

Schedule of City Addresses Not in the State's Point Match System (Continued)

3510	SE	2ND	CT	33435
3619	SE	2ND	ST	33435
1480	SW	30TH	AVE	3.34E+08
1549	SW	30TH	AVE	33426
125	NW	31ST	TER	33436
0	NE	3RD	CT	33435
100	NW	3RD	CT	3.34E+08
200	NW	3RD	AVE	3.34E+08
406	NE	3RD	AVE	33435
409	NE	3RD	ST	33435
413	NE	3RD	AVE	33435
511	NE	3RD	ST	3.34E+08
703	SW	3RD	ST	33435
817	SE	3RD	ST	33435
900	SW	3RD	AVE	33435
1001	NW	3RD	ST	33435
1202	SW	3RD	ST	33435
0	NE	4TH	AVE	33435
1	NE	4TH	ST	33435
201	NE	4TH	ST	33435
213	NW	4TH	AVE	33435
351	SE	4TH	ST	33435
501	SE	4TH	ST	3.34E+08
552	NW	4TH	AVE	33435
560	NW	4TH	AVE	33435
600	SE	4TH	ST	33435
606	SE	4TH	ST	33435
626	SE	4TH	ST	33435
703	SE	4TH	ST	33435
1016	NW	4TH	ST	33435
1401	NW	4TH	ST	33435
1710	NE	4TH	ST	33435
2100	NE	4TH	ST	33435
2286	SE	4TH	ST	3.34E+08
2658	NE	4TH	ST	33435
125	NW	5TH	CT	33435
181	SE	5TH	AVE	33435
1202	NW	5TH	ST	33435
1615	NW	5TH	ST	33435
1800	NE	5TH	ST	33435
1801	NE	5TH	ST	33435
1902	NE	5TH	ST	33435
1903	NE	5TH	ST	33435
2005	NE	5TH	ST	33435
2414	SW	5TH	ST	33426
100	NW	6TH	AVE	33435
114	NE	6TH	AVE	33435

**CITY OF BOYNTON BEACH MUNICIPAL FIREFIGHTERS'
PENSION TRUST FUND**

Schedule of City Addresses Not in the State's Point Match System (Continued)

390	SE	6TH	AVE	33435
572	SW	6TH	AVE	3.34E+08
620	NE	6TH	AVE	33435
624	NE	6TH	AVE	33435
687	NE	6TH	CT	33435
1700	NE	6TH	ST	33435
1701	NE	6TH	ST	33435
1750	NE	6TH	ST	33435
1801	NE	6TH	ST	33435
1802	NE	6TH	ST	33435
1902	NE	6TH	ST	33435
1903	NE	6TH	ST	33435
2000	NE	6TH	ST	33435
2711	SW	6TH	ST	33426
3865		71ST	AVE	33436
3904		71ST	LN	33436
104	NE	7TH	AVE	33435
106	NE	7TH	AVE	33435
108	NE	7TH	AVE	33435
217	NW	7TH	CT	33435
427	NW	7TH	CT	33426
619	NE	7TH	AVE	33435
700	SW	7TH	ST	33426
713	NE	7TH	AVE	33435
720	NE	7TH	AVE	33435
740	NE	7TH	AVE	33435
760	NE	7TH	AVE	33435
800	NE	7TH	ST	33435
920	NE	7TH	ST	33435
1006	NE	7TH	ST	33435
0	SW	8TH	AVE	33435
103	NW	8TH	AVE	33435
205	NW	8TH	ST	33426
310	SW	8TH	ST	33426
500	NW	8TH	AVE	33435
551	SW	8TH	ST	33426
730	NE	8TH	AVE	33435
742	NE	8TH	AVE	33435
755	SW	8TH	ST	33426
885	NW	8TH	AVE	33426
1000	NW	8TH	CT	33426
1534	SW	8TH	ST	33426
1536	SW	8TH	ST	33426
2700	SW	8TH	ST	33435
0	NE	9TH	AVE	33435
100	NW	9TH	CT	33435
100	NW	9TH	ST	33435

**CITY OF BOYNTON BEACH MUNICIPAL FIREFIGHTERS'
PENSION TRUST FUND**

Schedule of City Addresses Not in the State's Point Match System (Continued)

208	SE	9TH	AVE	33435
843	NW	9TH	WAY	33426
845	NW	9TH	WAY	33426
100	N	ABERCORN	CIR	33436
200	S	ABERCORN	CIR	33436
300	S	ABERCORN	CIR	33436
400	S	ABERCORN	CIR	33436
498	S	ABERCORN	CIR	33436
500	S	ABERCORN	CIR	33436
2400		AMHERST	CT	33436
2500		AMHERST	CT	33436
2600		AMHERST	CT	33436
2700		AMHERST	CT	33436
2705		AMHERST	CT	33436
100		ANDOVER	CT	33436
200		ANDOVER	CT	33436
300		ANDOVER	CT	33436
400		ANDOVER	CT	33436
500		ANDOVER	CT	33436
1730		AREZZO	CIR	33436
1		ASBURY	WAY	33426
2		ASBURY	WAY	33426
3		ASBURY	WAY	33426
4		ASBURY	WAY	33426
5		ASBURY	WAY	33426
6		ASBURY	WAY	33426
7		ASBURY	WAY	33426
8		ASBURY	WAY	33426
9		ASBURY	WAY	33426
10		ASBURY	WAY	33426
11		ASBURY	WAY	33426
12		ASBURY	WAY	33426
13		ASBURY	WAY	33426
14		ASBURY	WAY	33426
15		ASBURY	WAY	33426
16		ASBURY	WAY	33426
10100		ASHWOOD	PL	33437
3888		ASPEN LEAF	DR	33436
3890		ASPEN LEAF	DR	33436
100		AUDACE	AVE	33426
1010		AUDACE	AVE	33426
1020		AUDACE	AVE	33426
1030		AUDACE	AVE	33426
1040		AUDACE	AVE	33426
1050		AUDACE	AVE	33426
1060		AUDACE	AVE	33426
1070		AUDACE	AVE	33426

**CITY OF BOYNTON BEACH MUNICIPAL FIREFIGHTERS'
PENSION TRUST FUND**

Schedule of City Addresses Not in the State's Point Match System (Continued)

3000		AUDACE	AVE	33426
821		BAMBOO	LN	33483
8532		BARON	DR	33436
8534		BARON	DR	33436
87		BAYTREE	CIR	33436
100		BELMONT	PL	33436
200		BELMONT	PL	33436
300		BELMONT	PL	33436
400		BELMONT	PL	33436
500		BELMONT	PL	33436
600		BELMONT	PL	33436
700		BELMONT	PL	33436
800		BELMONT	PL	33436
900		BELMONT	PL	33436
1000		BELMONT	PL	33436
1100		BELMONT	PL	33436
1200		BELMONT	PL	33436
1300		BELMONT	PL	33436
1400		BELMONT	PL	33436
1500		BELMONT	PL	33436
1600		BELMONT	PL	33436
1700		BELMONT	PL	33436
1800		BELMONT	PL	33436
1900		BELMONT	PL	33436
2000		BELMONT	PL	33436
2100		BELMONT	PL	33436
58		BENTWATER	CIR	33426
8006		BERMUDA SOUND	WAY	33436
50		BETHESDA PARK	CIR	33435
200		BIRCH	ST	33426
214		BIRCH	ST	33426
226		BIRCH	ST	33426
2700		BLACK OAK	WAY	33436
2800		BLACK OAK	WAY	33436
2900		BLACK OAK	CT	33436
3000		BLACK OAK	CT	33436
3100		BLACK OAK	CT	33436
3200		BLACK OAK	CT	33436
3300		BLACK OAK	CT	33436
101		BONITO	DR	3.34E+08
351		BOYNTON BAY	CIR	33436
481		BOYNTON BAY	CIR	33436
499		BOYNTON BAY	CIR	33436
500		BOYNTON BAY	CIR	33435
1750		BOYNTON BAY	CT	33435
129	E	BOYNTON BEACH	BLVD	33435
130	E	BOYNTON BEACH	BLVD	33435

**CITY OF BOYNTON BEACH MUNICIPAL FIREFIGHTERS'
PENSION TRUST FUND**

Schedule of City Addresses Not in the State's Point Match System (Continued)

220	W	BOYNTON BEACH	BLVD	33435
226	W	BOYNTON BEACH	BLVD	33435
230	E	BOYNTON BEACH	BLVD	33435
300	W	BOYNTON BEACH	BLVD	33435
304	W	BOYNTON BEACH	BLVD	33435
311	E	BOYNTON BEACH	BLVD	33435
437	W	BOYNTON BEACH	BLVD	33435
498	E	BOYNTON BEACH	BLVD	33435
507	E	BOYNTON BEACH	BLVD	33435
640	W	BOYNTON BEACH	BLVD	33426
705	E	BOYNTON BEACH	BLVD	33435
711	W	BOYNTON BEACH	BLVD	33426
900	W	BOYNTON BEACH	BLVD	33426
902	W	BOYNTON BEACH	BLVD	33426
1300	W	BOYNTON BEACH	BLVD	33426
1315	W	BOYNTON BEACH	BLVD	33426
1401	W	BOYNTON BEACH	BLVD	33426
1511	W	BOYNTON BEACH	BLVD	33426
1521	W	BOYNTON BEACH	BLVD	33426
1523	W	BOYNTON BEACH	BLVD	33435
1530	W	BOYNTON BEACH	BLVD	33426
1531	W	BOYNTON BEACH	BLVD	33426
1540	W	BOYNTON BEACH	BLVD	33426
3102	W	BOYNTON BEACH	BLVD	3.34E+08
3500	W	BOYNTON BEACH	BLVD	33436
1		BOYNTON LAKES	BLVD	33426
600		BRADFORD	CT	33436
700		BRADFORD	CT	33436
800		BRADFORD	CT	33436
900		BRADFORD	CT	33436
52		BRENTWOOD	DR	33436
53		BRENTWOOD	DR	33436
28		BRISTOL	LN	33436
42		BRISTOL	LN	33436
100	S	BROUGHTON	CT	33436
105	N	BROUGHTON	CIR	33436
107	N	BROUGHTON	CIR	33436
202	S	BROUGHTON	CT	33436
400	S	BROUGHTON	CT	33436
408	N	BROUGHTON	SQ	33436
600	N	BROUGHTON	CIR	33436
700	N	BROUGHTON	CIR	33436
700	N	BROUGHTON	SQ	33436
800	S	BROUGHTON	CIR	33436
900	S	BROUGHTON	CIR	33436
1001	S	BROUGHTON	SQ	33436
1007	S	BROUGHTON	SQ	33436

**CITY OF BOYNTON BEACH MUNICIPAL FIREFIGHTERS'
PENSION TRUST FUND**

Schedule of City Addresses Not in the State's Point Match System (Continued)

1101	S	BROUGHTON	SQ	33436
1400	S	BROUGHTON	SQ	33436
1500	S	BROUGHTON	CIR	33436
1500	S	BROUGHTON	SQ	33436
1600	S	BROUGHTON	CT	33436
1700	S	BROUGHTON	CT	33436
1900	S	BROUGHTON	CT	33436
105		BUTTONWOOD	CIR	33436
117		BUTTONWOOD	CIR	33436
121		BUTTONWOOD	CIR	33436
37		CAMBRIDGE	DR	33436
633		CASA LOMA	BLVD	33435
678		CASA LOMA	BLVD	33435
8975		CASTLE	DR	33436
1500		CHADWICK	CT	33436
1600		CHADWICK	CT	33436
1700		CHADWICK	CT	33436
1800		CHADWICK	CT	33436
1900		CHADWICK	CT	33436
2000		CHADWICK	CT	33436
2100		CHADWICK	CT	33436
2200		CHADWICK	CT	33436
2300		CHADWICK	CT	33436
900		CHAPEL HILL	BLVD	33435
100		CHATHAM	CT	33436
101		CHATTAM	CT	33426
103		CHATTAM	CT	33426
105		CHATTAM	CT	33426
107		CHATTAM	CT	33426
109		CHATTAM	CT	33426
111		CHATTAM	CT	33426
113		CHATTAM	CT	33426
115		CHATTAM	CT	33426
117		CHATTAM	CT	33426
119		CHATTAM	CT	33426
9900		CHESTNUT TREE	TER	33436
108	N	CHIPPEWA	CIR	33436
180	N	CHIPPEWA	CIR	33436
200		CHIPPEWA	SQ	33436
210	S	CHIPPEWA	CIR	33436
220	S	CHIPPEWA	CIR	33436
230		CHIPPEWA	SQ	33436
260	S	CHIPPEWA	CIR	33436
270	S	CHIPPEWA	CIR	33436
414	N	CHIPPEWA	CIR	33436
1800	N	CHIPPEWA	CIR	33436
2000	N	CHIPPEWA	CIR	33436

**CITY OF BOYNTON BEACH MUNICIPAL FIREFIGHTERS'
PENSION TRUST FUND**

Schedule of City Addresses Not in the State's Point Match System (Continued)

2100	S	CHIPPEWA	CIR	33436
2200	S	CHIPPEWA	CIR	33436
2300		CHIPPEWA	SQ	33436
2600	S	CHIPPEWA	CIR	33436
2700	S	CHIPPEWA	CIR	33436
421	S	CIRCLE	DR	33435
425	S	CIRCLE	DR	33435
154		CITRUS PARK	CIR	33436
4890		CLOCK	RD	33463
3600		CLUBHOUSE	LN	33436
2900		COCONUT	LN	33436
120		COMMERCE	RD	33426
145	N	CONGRESS	AVE	33426
303	N	CONGRESS	AVE	33426
312	N	CONGRESS	AVE	33426
314	N	CONGRESS	AVE	33426
320	N	CONGRESS	AVE	33426
322	N	CONGRESS	AVE	33426
502	S	CONGRESS	AVE	33426
740	N	CONGRESS	AVE	33426
830	N	CONGRESS	AVE	33426
850	N	CONGRESS	AVE	33426
870	N	CONGRESS	AVE	33426
890	N	CONGRESS	AVE	33426
903	N	CONGRESS	AVE	33426
910	N	CONGRESS	AVE	33426
920	N	CONGRESS	AVE	33426
930	N	CONGRESS	AVE	33426
950	N	CONGRESS	AVE	33426
970	N	CONGRESS	AVE	33426
1050	N	CONGRESS	AVE	33426
1335	S	CONGRESS	AVE	33426
1500	S	CONGRESS	AVE	33426
1630	S	CONGRESS	AVE	33426
1700	N	CONGRESS	AVE	33426
1703	N	CONGRESS	AVE	33426
1711	N	CONGRESS	AVE	33426
1737	N	CONGRESS	AVE	33426
1753	N	CONGRESS	AVE	33426
1755	N	CONGRESS	AVE	33426
1757	N	CONGRESS	AVE	33426
1759	N	CONGRESS	AVE	33426
1763	N	CONGRESS	AVE	33426
1767	N	CONGRESS	AVE	33426
1771	N	CONGRESS	AVE	33426
1773	N	CONGRESS	AVE	33426
1810	N	CONGRESS	AVE	33426

**CITY OF BOYNTON BEACH MUNICIPAL FIREFIGHTERS'
PENSION TRUST FUND**

Schedule of City Addresses Not in the State's Point Match System (Continued)

1907	S	CONGRESS	AVE	33426
2000	SW	CONGRESS	BLVD	33426
2200	N	CONGRESS	AVE	33426
2210	N	CONGRESS	AVE	33426
2226	N	CONGRESS	AVE	33426
2246	N	CONGRESS	AVE	33426
2264	N	CONGRESS	AVE	33426
2284	N	CONGRESS	AVE	33426
2286	N	CONGRESS	AVE	33426
2323	N	CONGRESS	AVE	33426
2701	S	CONGRESS	AVE	33426
2950	S	CONGRESS	AVE	33426
3500	S	CONGRESS	AVE	33426
3601	S	CONGRESS	AVE	33426
3801	S	CONGRESS	AVE	33426
3850	N	CONGRESS	AVE	33426
3851	S	CONGRESS	AVE	33426
3861	S	CONGRESS	AVE	33426
4000	S	CONGRESS	AVE	33426
4603	N	CONGRESS	AVE	33426
4605	N	CONGRESS	AVE	33426
4607	N	CONGRESS	AVE	33426
4609	N	CONGRESS	AVE	33426
4611	N	CONGRESS	AVE	33426
4702	N	CONGRESS	AVE	33426
4703	N	CONGRESS	AVE	33426
4705	N	CONGRESS	AVE	33426
4747	N	CONGRESS	AVE	33426
4764	N	CONGRESS	AVE	33426
4766	N	CONGRESS	AVE	33426
4772	N	CONGRESS	AVE	33426
1000		COPLEY	CT	33436
1100		COPLEY	CT	33436
1200		COPLEY	CT	33436
1300		COPLEY	CT	33436
1400		COPLEY	CT	33436
1062		CORAL	DR	33426
1601		CORPORATE	DR	33426
1801		CORPORATE	DR	33426
1811		CORPORATE	DR	33426
1821		CORPORATE	DR	33426
1823		CORPORATE	DR	33426
1827		CORPORATE	DR	33426
1829		CORPORATE	DR	33426
1902		CORPORATE	DR	33426
1910		CORPORATE	DR	33426
1912		CORPORATE	DR	33426

**CITY OF BOYNTON BEACH MUNICIPAL FIREFIGHTERS'
PENSION TRUST FUND**

Schedule of City Addresses Not in the State's Point Match System (Continued)

1914		CORPORATE	DR	33426
1916		CORPORATE	DR	33426
1918		CORPORATE	DR	33426
1920		CORPORATE	DR	33426
2001		CORPORATE	DR	33426
2003		CORPORATE	DR	33426
2005		CORPORATE	DR	33426
2007		CORPORATE	DR	33426
2009		CORPORATE	DR	33426
2011		CORPORATE	DR	33426
2013		CORPORATE	DR	33426
2015		CORPORATE	DR	33426
2017		CORPORATE	DR	33426
2023		CORPORATE	DR	33426
2101		CORPORATE	DR	33426
2102		CORPORATE	DR	33426
2103		CORPORATE	DR	33426
2104		CORPORATE	DR	33426
2105		CORPORATE	DR	33426
2106		CORPORATE	DR	33426
2107		CORPORATE	DR	33426
2108		CORPORATE	DR	33426
2109		CORPORATE	DR	33426
2110		CORPORATE	DR	33426
2114		CORPORATE	DR	33426
2115		CORPORATE	DR	33426
2116		CORPORATE	DR	33426
2117		CORPORATE	DR	33426
2118		CORPORATE	DR	33426
2206		CORPORATE	DR	33426
50		COUNTRY LAKE	CIR	33436
2657		COUNTRY LAKE	TRL	33436
2658		COUNTRY LAKE	TRL	33436
2659		COUNTRY LAKE	TRL	33436
2660		COUNTRY LAKE	TRL	33436
2661		COUNTRY LAKE	TRL	33436
2662		COUNTRY LAKE	TRL	33436
2663		COUNTRY LAKE	TRL	33436
2664		COUNTRY LAKE	TRL	33436
2665		COUNTRY LAKE	TRL	33436
2667		COUNTRY LAKE	TRL	33436
2668		COUNTRY LAKE	TRL	33436
2669		COUNTRY LAKE	TRL	33436
2703		COUNTRY LAKE	TRL	33436
2704		COUNTRY LAKE	TRL	33436
2715		COUNTRY LAKE	TRL	33436
2716		COUNTRY LAKE	TRL	33436

**CITY OF BOYNTON BEACH MUNICIPAL FIREFIGHTERS'
PENSION TRUST FUND**

Schedule of City Addresses Not in the State's Point Match System (Continued)

2723		COUNTRY LAKE	TRL	33436
2724		COUNTRY LAKE	TRL	33436
2727		COUNTRY LAKE	TRL	33436
2728		COUNTRY LAKE	TRL	33436
2734		COUNTRY LAKE	TRL	33436
2735		COUNTRY LAKE	TRL	33436
2736		COUNTRY LAKE	TRL	33436
2737		COUNTRY LAKE	TRL	33436
2740		COUNTRY LAKE	TRL	33436
2741		COUNTRY LAKE	TRL	33436
792		CROWDER	WAY	33436
8752		CROWN	DR	33436
930		DAXXX	DR	33436
1		DESFORD	LN	33426
644		DIMICK	RD	33435
6400		DRYDEN	CT	33436
6500		DRYDEN	CT	33436
6600		DRYDEN	CT	33436
6700		DRYDEN	CT	33436
6800		DRYDEN	CT	33436
6900		DRYDEN	CT	33436
7000		DRYDEN	CT	33436
7100		DRYDEN	CT	33436
7200		DRYDEN	CT	33436
8666		DUKE	CT	33436
8678		DUKE	CT	33436
101		EDEN RIDGE	LN	33435
200		ELM	WAY	33426
201		ELM	WAY	33426
49		ESSEX	LN	33436
51		ESSEX	DR	33436
51		ESSEX	LN	33436
3200		ESTANCIA	LN	33435
3201		ESTANCIA	LN	33435
3251		ESTANCIA	LN	33435
3293		ESTANCIA	LN	33435
49		ESTATE	DR	33436
157		EXECUTIVE	CIR	33436
0	N	FEDERAL	HWY	33435
106		FEDERAL	HWY	3.35E+08
110	S	FEDERAL	HWY	33435
116	N	FEDERAL	HWY	33435
210	N	FEDERAL	HWY	3.34E+08
214	S	FEDERAL	HWY	33435
290	S	FEDERAL	HWY	33435
322	N	FEDERAL	HWY	33435
415	S	FEDERAL	HWY	33435

**CITY OF BOYNTON BEACH MUNICIPAL FIREFIGHTERS'
PENSION TRUST FUND**

Schedule of City Addresses Not in the State's Point Match System (Continued)

416	N	FEDERAL	HWY	33435
500	S	FEDERAL	HWY	33435
504	S	FEDERAL	HWY	33435
601	S	FEDERAL	HWY	33435
602	N	FEDERAL	HWY	33435
603	N	FEDERAL	HWY	33435
700	N	FEDERAL	HWY	3.34E+08
702	N	FEDERAL	HWY	33435
811	N	FEDERAL	HWY	33435
813	N	FEDERAL	HWY	33435
817	N	FEDERAL	HWY	33435
818	N	FEDERAL	HWY	33435
900	S	FEDERAL	HWY	3.34E+08
904	N	FEDERAL	HWY	33435
1050	S	FEDERAL	HWY	33435
1103	N	FEDERAL	HWY	33435
1107	N	FEDERAL	HWY	33435
1118	N	FEDERAL	HWY	33435
1311	N	FEDERAL	HWY	33435
1321	S	FEDERAL	HWY	33435
1323	S	FEDERAL	HWY	33435
1325	S	FEDERAL	HWY	33435
1333	S	FEDERAL	HWY	33435
1350	S	FEDERAL	HWY	33435
1375	S	FEDERAL	HWY	33435
1391	S	FEDERAL	HWY	33435
1420	N	FEDERAL	HWY	33435
1425	S	FEDERAL	HWY	33435
1429	S	FEDERAL	HWY	33435
1453	S	FEDERAL	HWY	33435
1497	S	FEDERAL	HWY	33435
1500	N	FEDERAL	HWY	3.34E+08
1552	N	FEDERAL	HWY	3.34E+08
1569	S	FEDERAL	HWY	33435
1606	S	FEDERAL	HWY	33435
1638	S	FEDERAL	HWY	33435
1725	S	FEDERAL	HWY	33435
1727	S	FEDERAL	HWY	33435
1801	N	FEDERAL	HWY	3.34E+08
1805	N	FEDERAL	HWY	33435
1806	N	FEDERAL	HWY	33435
1812	S	FEDERAL	HWY	33435
1840	N	FEDERAL	HWY	33435
1910	N	FEDERAL	HWY	3.34E+08
1930	N	FEDERAL	HWY	3.34E+08
1940	N	FEDERAL	HWY	33435
1952	S	FEDERAL	HWY	33435

**CITY OF BOYNTON BEACH MUNICIPAL FIREFIGHTERS'
PENSION TRUST FUND**

Schedule of City Addresses Not in the State's Point Match System (Continued)

2210	S	FEDERAL	HWY	33435
2220	S	FEDERAL	HWY	33435
2225	N	FEDERAL	HWY	33435
2226	S	FEDERAL	HWY	33435
2260	N	FEDERAL	HWY	33435
2281	N	FEDERAL	HWY	33435
2320	S	FEDERAL	HWY	33435
2321	S	FEDERAL	HWY	33435
2322	S	FEDERAL	HWY	33435
2404	S	FEDERAL	HWY	33435
2421	S	FEDERAL	HWY	33435
2509	N	FEDERAL	HWY	33435
2515	S	FEDERAL	HWY	33435
2604	S	FEDERAL	HWY	33435
2649	N	FEDERAL	HWY	33435
2651	N	FEDERAL	HWY	33435
2660	N	FEDERAL	HWY	33435
2870	S	FEDERAL	HWY	33435
2872	S	FEDERAL	HWY	33435
3000	S	FEDERAL	HWY	33435
3025	N	FEDERAL	HWY	33435
3029		FEDERAL	HWY	3.35E+08
3035	S	FEDERAL	HWY	33483
3045	N	FEDERAL	HWY	33483
3047	N	FEDERAL	HWY	33435
3050	S	FEDERAL	HWY	33483
3101	N	FEDERAL	HWY	33435
3102	S	FEDERAL	HWY	33435
3377	S	FEDERAL	HWY	33435
3420	N	FEDERAL	HWY	33435
3430	N	FEDERAL	HWY	33435
3501	N	FEDERAL	HWY	33435
3505	S	FEDERAL	HWY	33435
3508	S	FEDERAL	HWY	33435
3509	S	FEDERAL	HWY	33435
3511	S	FEDERAL	HWY	33435
3513	S	FEDERAL	HWY	33435
3517	S	FEDERAL	HWY	33435
3521	S	FEDERAL	HWY	33435
3525	S	FEDERAL	HWY	33435
3529	S	FEDERAL	HWY	33435
3531	S	FEDERAL	HWY	33435
3535	S	FEDERAL	HWY	33435
3539	S	FEDERAL	HWY	33435
3543	S	FEDERAL	HWY	33435
3547	S	FEDERAL	HWY	33435
3551	S	FEDERAL	HWY	33435

**CITY OF BOYNTON BEACH MUNICIPAL FIREFIGHTERS'
PENSION TRUST FUND**

Schedule of City Addresses Not in the State's Point Match System (Continued)

3555	S	FEDERAL	HWY	33435
3559	S	FEDERAL	HWY	33435
3563	S	FEDERAL	HWY	33435
3567	S	FEDERAL	HWY	33435
3571	S	FEDERAL	HWY	33435
3575	S	FEDERAL	HWY	33435
3579	S	FEDERAL	HWY	33435
3583	S	FEDERAL	HWY	33435
3587	S	FEDERAL	HWY	33435
3591	S	FEDERAL	HWY	33435
3595	S	FEDERAL	HWY	33435
3599	S	FEDERAL	HWY	33435
3609	S	FEDERAL	HWY	33435
3625	S	FEDERAL	HWY	33435
3701	S	FEDERAL	HWY	33435
3704	S	FEDERAL	HWY	33435
3908	S	FEDERAL	HWY	33435
19		FINSBURY	LN	33426
1		FLAVOR PICT	RD	33437
1000		FOSTERS MILL	RD	33436
2800		FOXBORO	CT	33436
460		FRANCESCA RIDGE	RD	33435
302		GALAXY	WAY	33435
900		GASTON	CT	33436
1000		GASTON	CT	33436
1100		GASTON	CT	33436
1200		GASTON	CT	33436
1		GATEWAY	BLVD	33435
100	E	GATEWAY	BLVD	33435
108	E	GATEWAY	BLVD	33435
530	E	GATEWAY	BLVD	33435
538	E	GATEWAY	BLVD	33435
540	E	GATEWAY	BLVD	33435
801	W	GATEWAY	BLVD	33426
1520	W	GATEWAY	BLVD	33426
1530	W	GATEWAY	BLVD	33426
1540	W	GATEWAY	BLVD	33426
1550	W	GATEWAY	BLVD	33426
1551	W	GATEWAY	BLVD	33426
1600	W	GATEWAY	BLVD	33426
1650	W	GATEWAY	BLVD	33426
2201	W	GATEWAY	BLVD	33426
4001	W	GATEWAY	BLVD	33436
500		GOLFSTREAM	BLVD	33483
400		GRAHAM	PL	33435
401		GRAHAM	PL	33435
945		GREENBRIAR	DR	33435

**CITY OF BOYNTON BEACH MUNICIPAL FIREFIGHTERS'
PENSION TRUST FUND**

Schedule of City Addresses Not in the State's Point Match System (Continued)

400	N	GREENLEAF	CIR	33426
500	S	GREENLEAF	CIR	3.34E+08
424		GREENSBORO	WAY	33435
1000		GROVE PARK	CIR	33436
245		GULFSTREAM	BLVD	33435
500		GULFSTREAM	RD	33483
12		HAMPSHIRE	LN	33436
152		HARBORS	WAY	33435
154		HARBORS	WAY	33435
1414		HARVARD	LN	33426
1419		HARVARD	LN	33426
2901		HAYDEN	CT	33436
3000		HAYDEN	CT	33436
3100		HAYDEN	CT	33436
3200		HAYDEN	CT	33436
3300		HAYDEN	CT	33436
3400		HAYDEN	CT	33436
1		HEATHER LAKE	DR	33436
297		HIGH POINT	BLVD	33435
302		HIGH POINT	BLVD	33435
1499	NW	HIGH RIDGE	RD	33426
1625		HIGH RIDGE	RD	33426
1920		HIGH RIDGE	RD	33426
1928		HIGH RIDGE	RD	33426
2037		HIGH RIDGE	RD	33426
2040		HIGH RIDGE	RD	33426
2041		HIGH RIDGE	RD	33426
2043		HIGH RIDGE	RD	33426
2051		HIGH RIDGE	RD	33426
2075		HIGH RIDGE	RD	33426
2085		HIGH RIDGE	RD	33426
2475		HIGH RIDGE	RD	33426
2500		HIGH RIDGE	RD	33426
2802		HIGH RIDGE	RD	33426
3001		HIGH RIDGE	RD	33426
3007		HIGH RIDGE	RD	33426
3013		HIGH RIDGE	RD	33426
3019		HIGH RIDGE	RD	33426
3025		HIGH RIDGE	RD	33426
3031		HIGH RIDGE	RD	33426
3037		HIGH RIDGE	RD	33426
3043		HIGH RIDGE	RD	33426
3055		HIGH RIDGE	RD	33426
3061		HIGH RIDGE	RD	33426
3067		HIGH RIDGE	RD	33426
3073		HIGH RIDGE	RD	33426
3079		HIGH RIDGE	RD	33426

**CITY OF BOYNTON BEACH MUNICIPAL FIREFIGHTERS'
PENSION TRUST FUND**

Schedule of City Addresses Not in the State's Point Match System (Continued)

3085		HIGH RIDGE	RD	33426
3090		HIGH RIDGE	RD	33426
3091		HIGH RIDGE	RD	33426
3103		HIGH RIDGE	RD	33426
3109		HIGH RIDGE	RD	33426
3115		HIGH RIDGE	RD	33426
3121		HIGH RIDGE	RD	33426
3127		HIGH RIDGE	RD	33426
3133		HIGH RIDGE	RD	33426
3139		HIGH RIDGE	RD	33426
3145		HIGH RIDGE	RD	33426
3201		HIGH RIDGE	RD	33426
3211		HIGH RIDGE	RD	33426
3221		HIGH RIDGE	RD	33426
3231		HIGH RIDGE	RD	33426
3241		HIGH RIDGE	RD	33426
3251		HIGH RIDGE	RD	33426
3261		HIGH RIDGE	RD	33426
3271		HIGH RIDGE	RD	33426
3281		HIGH RIDGE	RD	33426
3291		HIGH RIDGE	RD	33426
3301		HIGH RIDGE	RD	33426
3325		HIGH RIDGE	RD	33426
3329		HIGH RIDGE	RD	33426
3341		HIGH RIDGE	RD	33426
3349		HIGH RIDGE	RD	33426
3357		HIGH RIDGE	RD	33426
3365		HIGH RIDGE	RD	33426
3373		HIGH RIDGE	RD	33426
3401		HIGH RIDGE	RD	33426
3417		HIGH RIDGE	RD	33426
3433		HIGH RIDGE	RD	33426
3443		HIGH RIDGE	RD	33426
3451		HIGH RIDGE	RD	33426
3467		HIGH RIDGE	RD	33426
3469		HIGH RIDGE	RD	33426
3501		HIGH RIDGE	RD	33426
3517		HIGH RIDGE	RD	33426
3529		HIGH RIDGE	RD	33426
3537		HIGH RIDGE	RD	33426
7731		HIGH RIDGE	RD	33426
7745		HIGH RIDGE	RD	33426
230		HIGHPOINT	BLVD	33435
206	W	HORIZONS		33435
510	W	HORIZONS		33435
520	W	HORIZONS		33435
28		HUDSON	AVE	33435

**CITY OF BOYNTON BEACH MUNICIPAL FIREFIGHTERS'
PENSION TRUST FUND**

Schedule of City Addresses Not in the State's Point Match System (Continued)

3920		HYPOLUXO	RD	33436
3922		HYPOLUXO	RD	33436
1		HYPOLUXO FARMS	RD	33462
408	W	INDUSTRIAL	AVE	33426
504	W	INDUSTRIAL	AVE	33426
528		INDUSTRIAL	AVE	33426
653		INDUSTRIAL	WAY	33426
680	W	INDUSTRIAL	AVE	33426
750	W	INDUSTRIAL	AVE	3.34E+08
1020	W	INDUSTRIAL	AVE	33426
1070	W	INDUSTRIAL	AVE	33426
1080	W	INDUSTRIAL	AVE	33426
1090	W	INDUSTRIAL	AVE	33426
1220	W	INDUSTRIAL	AVE	33426
1240	W	INDUSTRIAL	AVE	33426
23		ISLINGTON	PL	33426
206		KEPNER	DR	33435
4341		KEY LIME	BLVD	33436
4342		LADY BEVERLEE	CT	33436
4428		LADY BEVERLEE	CT	33436
4431		LADY BEVERLEE	CT	33436
4441		LADY BEVERLEE	CT	33436
4452		LADY BEVERLEE	CT	33436
4453		LADY BEVERLEE	CT	33436
4465		LADY BEVERLEE	CT	33436
4480		LADY BEVERLEE	CT	33436
4482		LADY BEVERLEE	CT	33436
630		LAKE	ST	3.34E+08
643		LAKE	ST	33435
2624	N	LAKE	DR	33435
3895	S	LAKE	DR	33435
3910		LAKE	DR	33435
73		LAKE EDEN	DR	33435
600		LAKESIDE HARBOR		33435
610		LAKESIDE HARBOR		33435
620		LAKESIDE HARBOR		33435
458		LAUREN PINE	PL	33435
461		LAUREN PINE	PL	33435
7500		LAWRENCE	RD	33436
7600		LAWRENCE	RD	33436
8053		LAWRENCE	RD	33436
8200		LAWRENCE	RD	33436
8300		LAWRENCE	RD	33436
8350		LAWRENCE	RD	33436
8355		LAWRENCE	RD	33436
8455		LAWRENCE	RD	33436
16		LAWRENCE LAKE	DR	33436

**CITY OF BOYNTON BEACH MUNICIPAL FIREFIGHTERS'
PENSION TRUST FUND**

Schedule of City Addresses Not in the State's Point Match System (Continued)

300		LEISURE LAKE	CIR	33426
200		LEISURE LAKE CR		3.34E+08
1		LITTLE LEAGUE	RD	33435
1100		MAHOGANY	DR	33436
2100		MAHOGANY	DR	33436
3100		MAHOGANY	DR	33436
4100		MAHOGANY	DR	33436
5100		MAHOGANY	DR	33436
6100		MAHOGANY	DR	3.34E+08
7100		MAHOGANY	DR	33436
8100		MAHOGANY	DR	33436
9100		MAHOGANY	DR	33436
10100		MAHOGANY	DR	33436
11100		MAHOGANY	DR	33436
12100		MAHOGANY	DR	33436
13100		MAHOGANY	DR	33436
14101		MAHOGANY	DR	33426
15100		MAHOGANY	DR	33436
16100		MAHOGANY	DR	33436
362		MAIN	BLVD	33435
500		MANATEE BAY	DR	33435
519		MANATEE BAY	DR	33435
531		MANATEE BAY	DR	33435
538		MANATEE BAY	DR	33435
546		MANATEE BAY	DR	33435
552		MANATEE BAY	DR	33435
574		MANATEE BAY	DR	33435
592		MANATEE BAY	DR	33435
594		MANATEE BAY	DR	33435
1		MANOR	DR	33435
650		MANOR	DR	33435
651		MANOR	DR	33435
7802		MANOR FOREST	BLVD	33436
600		MARINERS	WAY	33435
640		MARINERS	WAY	33435
700		MARINERS	WAY	33435
753		MARINERS	WAY	33435
1		MEADOWS	CIR	33436
2		MEADOWS	BLVD	33436
2		MEADOWS	CIR	33436
3		MEADOWS	CIR	33436
5		MEADOWS	CIR	33436
6		MEADOWS	CIR	33436
7		MEADOWS	CIR	33436
8		MEADOWS	CIR	33436
9		MEADOWS	CIR	33436
10		MEADOWS	CIR	33436

**CITY OF BOYNTON BEACH MUNICIPAL FIREFIGHTERS'
PENSION TRUST FUND**

Schedule of City Addresses Not in the State's Point Match System (Continued)

11		MEADOWS	BLVD	33436
11		MEADOWS	CIR	33436
12		MEADOWS	CIR	33436
13		MEADOWS	CIR	33436
14		MEADOWS	CIR	33436
15		MEADOWS	CIR	33436
16		MEADOWS	CIR	33436
17		MEADOWS	CIR	33436
18		MEADOWS	CIR	33436
90		MEADOWS	DR	33436
100		MEADOWS	BLVD	33436
100		MEADOWS	DR	33436
120		MEADOWS	DR	33436
130		MEADOWS	DR	33436
160		MEADOWS	DR	33436
180		MEADOWS	DR	33436
190		MEADOWS	DR	33436
200		MEADOWS	CIR	33436
210		MEADOWS	DR	33436
260		MEADOWS	DR	33436
710		MEADOWS	BLVD	33436
1431		MEADOWS	CIR	33436
1531		MEADOWS	CIR	33436
1550		MEADOWS	CIR	33436
1631		MEADOWS	CIR	33436
1705		MEADOWS	BLVD	33436
1731		MEADOWS	CIR	33436
1831		MEADOWS	CIR	33436
1900		MEADOWS	CIR	33436
3500		MEDFORD	CT	33436
3600		MEDFORD	CT	33436
3700		MEDFORD	CT	33436
3800		MEDFORD	CT	33436
3900		MEDFORD	CT	33436
4000		MEDFORD	CT	33436
1143		MENTONE	RD	33462
391		MINER	RD	33435
927		MINER	RD	33426
935		MINER	RD	33426
939		MINER	RD	33426
943		MINER	RD	33426
947		MINER	RD	33426
951		MINER	RD	33426
955		MINER	RD	33426
959		MINER	RD	33426
963		MINER	RD	33426
967		MINER	RD	33426

**CITY OF BOYNTON BEACH MUNICIPAL FIREFIGHTERS'
PENSION TRUST FUND**

Schedule of City Addresses Not in the State's Point Match System (Continued)

971		MINER	RD	33426
975		MINER	RD	33426
979		MINER	RD	33426
999		MINER	RD	33426
1000		MINER	RD	33426
3647		MINER	RD	33436
3648		MINER	RD	33436
419		MISSION HILL	RD	33435
900		MISSION HILL	RD	33435
101	N	MONTEREY	CIR	33426
302		MONTEREY	SQ	33436
304		MONTEREY	SQ	33436
306		MONTEREY	SQ	33436
308		MONTEREY	SQ	33436
402		MONTEREY	SQ	33436
404		MONTEREY	SQ	33436
507		MONTEREY	SQ	33436
1122	S	MONTEREY	CIR	33436
1124	S	MONTEREY	CIR	33436
2800	N	MONTEREY	CIR	33436
2900	S	MONTEREY	CIR	33436
3000	S	MONTEREY	CIR	33436
3100		MONTEREY	SQ	33436
3400	S	MONTEREY	CIR	33436
3500	S	MONTEREY	CIR	33436
1		NEW LAKE	DR	33426
2		NEW LAKE	DR	33426
3		NEW LAKE	DR	33426
4		NEW LAKE	DR	33426
5		NEW LAKE	DR	33426
6		NEW LAKE	DR	33426
7		NEW LAKE	DR	33426
8		NEW LAKE	DR	33426
9		NEW LAKE	DR	33426
10		NEW LAKE	DR	33426
11		NEW LAKE	DR	33426
1015		NEW LAKE	DR	33426
1812		NEW PALM	WAY	33435
3678		NEWPORT	AVE	33436
612		NOCELLE	DR	33426
663		NORTH	RD	33435
714		NORTH	RD	33435
827		NORTH	RD	33435
44		NORTHWOODS	LN	33436
54		NORTHWOODS	LN	33436
68		NORTHWOODS	LN	33436
78		NORTHWOODS	LN	33436

**CITY OF BOYNTON BEACH MUNICIPAL FIREFIGHTERS'
PENSION TRUST FUND**

Schedule of City Addresses Not in the State's Point Match System (Continued)

83		NORTHWOODS	DR	33436
86		NORTHWOODS	LN	33436
87		NORTHWOODS	LN	33436
160		NOTTINGHAM	PL	33426
7200	E	OAKRIDGE	CIR	33462
0		OAKS	LN	33436
25		OAKS	LN	33436
2850	S	OASIS	DR	3.34E+08
2851	S	OASIS	DR	3.34E+08
2852	S	OASIS	DR	3.34E+08
2853	S	OASIS	DR	3.34E+08
2854	S	OASIS	DR	3.34E+08
2855	S	OASIS	DR	3.34E+08
2856	S	OASIS	DR	3.34E+08
2857	S	OASIS	DR	3.34E+08
2858	S	OASIS	DR	3.34E+08
2859	S	OASIS	DR	3.34E+08
2860	S	OASIS	DR	3.34E+08
0	E	OCEAN	AVE	33435
1		OCEAN	AVE	33435
100	E	OCEAN	AVE	33435
133	E	OCEAN	AVE	33435
135	E	OCEAN	AVE	33435
137	E	OCEAN	AVE	33435
141	E	OCEAN	AVE	33435
199	E	OCEAN	AVE	33435
213	E	OCEAN	AVE	33435
290		OCEAN	AVE	33435
407	E	OCEAN	AVE	33435
414	E	OCEAN	AVE	33435
491	E	OCEAN	AVE	33435
523	E	OCEAN	AVE	33435
550	W	OCEAN	AVE	33435
555	W	OCEAN	AVE	33435
564	W	OCEAN	AVE	33426
566	W	OCEAN	AVE	33426
569	W	OCEAN	DR	33426
571	W	OCEAN	AVE	33426
603	W	OCEAN	AVE	33426
609	W	OCEAN	AVE	33426
613	W	OCEAN	AVE	33426
614	E	OCEAN	AVE	33435
616	E	OCEAN	AVE	33435
618	E	OCEAN	AVE	33435
705	E	OCEAN	AVE	33435
711	E	OCEAN	AVE	33435
802	W	OCEAN	AVE	33426

**CITY OF BOYNTON BEACH MUNICIPAL FIREFIGHTERS'
PENSION TRUST FUND**

Schedule of City Addresses Not in the State's Point Match System (Continued)

802	W	OCEAN	DR	33426
900	W	OCEAN	DR	33426
1003		OCEAN	DR	33426
1107		OCEAN	DR	3.34E+08
1820	W	OCEAN	DR	33426
2900		OCEAN	PKWY	33435
4500	N	OCEAN	BLVD	33435
4530	N	OCEAN	BLVD	33435
4540	N	OCEAN	BLVD	33435
4560	N	OCEAN	BLVD	33435
1		OCEAN INLET PARK		33435
945		OLD BOYNTON	RD	33426
953		OLD BOYNTON	RD	33426
1201		OLD BOYNTON	RD	33426
1203		OLD BOYNTON	RD	33426
1205		OLD BOYNTON	RD	33426
1221		OLD BOYNTON	RD	3.34E+08
1241		OLD BOYNTON	RD	33426
3001		OLD BOYNTON BEACH	BLVD	3.34E+08
3314	N	OLD DIXIE	HWY	33483
3466		OLD DIXIE	HWY	33435
140		ORANGE	DR	33436
1		OSPREY	DR	33435
149	N	PALM	DR	3.34E+08
1		PALM CHASE LAKES	BLVD	33437
1545		PALMLAND	DR	33436
1561		PALMLAND	DR	33436
1610		PALMLAND	DR	33436
1770		PALMLAND	DR	33436
200		PARK	TER	33426
282		PARK	TER	33426
2095	SW	PARK	DR	33426
7140		PENZA	WAY	33463
1300		PIAZZA DELLE PALLOTTOLE		33426
1400		PIAZZA DELLE PALLOTTOLE		33426
9		PINEHURST	DR	33426
1		PLATINA	AVE	33437
635		POTTER	RD	33435
8902		PRINCE JAYME	DR	33436
8926		PRINCE JAYME	DR	33436
8936		PRINCE JAYME	DR	33436
8968		PRINCESS DONNA	CT	33436
2400		QUANTUM	BLVD	33426
2403		QUANTUM	BLVD	33426
2500		QUANTUM	BLVD	33426
2751		QUANTUM	BLVD	33426
2800		QUANTUM	BLVD	33426

**CITY OF BOYNTON BEACH MUNICIPAL FIREFIGHTERS'
PENSION TRUST FUND**

Schedule of City Addresses Not in the State's Point Match System (Continued)

2801		QUANTUM	BLVD	33426
2851		QUANTUM	BLVD	33426
2900		QUANTUM	BLVD	33426
2901		QUANTUM	BLVD	33426
2951		QUANTUM	BLVD	33426
3000		QUANTUM	BLVD	33426
3001		QUANTUM	BLVD	33426
3100		QUANTUM	BLVD	33426
3103		QUANTUM	BLVD	33426
3110		QUANTUM	BLVD	33426
3151		QUANTUM	BLVD	33426
3200		QUANTUM	BLVD	33426
3201		QUANTUM	BLVD	33426
3251		QUANTUM	BLVD	33426
3261		QUANTUM	BLVD	33426
3300		QUANTUM	BLVD	33426
3303		QUANTUM	BLVD	33426
3403		QUANTUM	BLVD	33426
3406		QUANTUM	BLVD	33426
3410		QUANTUM	BLVD	33426
3450		QUANTUM	BLVD	33426
3501		QUANTUM	BLVD	33426
3520		QUANTUM	BLVD	33426
3600		QUANTUM	BLVD	33426
3701		QUANTUM	BLVD	33426
3801		QUANTUM	BLVD	33426
3901		QUANTUM	BLVD	33426
3951		QUANTUM	BLVD	33426
901		QUANTUM LAKES	DR	33426
903		QUANTUM LAKES	DR	33426
905		QUANTUM LAKES	DR	33426
909		QUANTUM LAKES	DR	33426
913		QUANTUM LAKES	DR	33426
917		QUANTUM LAKES	DR	33426
921		QUANTUM LAKES	DR	33426
925		QUANTUM LAKES	DR	33426
929		QUANTUM LAKES	DR	33426
933		QUANTUM LAKES	DR	33426
937		QUANTUM LAKES	DR	33426
941		QUANTUM LAKES	DR	33426
945		QUANTUM LAKES	DR	33426
949		QUANTUM LAKES	DR	33426
953		QUANTUM LAKES	DR	33426
957		QUANTUM LAKES	DR	33426
961		QUANTUM LAKES	DR	33426
965		QUANTUM LAKES	DR	33426
969		QUANTUM LAKES	DR	33426

**CITY OF BOYNTON BEACH MUNICIPAL FIREFIGHTERS'
PENSION TRUST FUND**

Schedule of City Addresses Not in the State's Point Match System (Continued)

1000		QUANTUM LAKES	DR	33426
1001		QUANTUM LAKES	DR	33426
1003		QUANTUM LAKES	DR	33426
1005		QUANTUM LAKES	DR	33426
1007		QUANTUM LAKES	DR	33426
1009		QUANTUM LAKES	DR	33426
1011		QUANTUM LAKES	DR	33426
1013		QUANTUM LAKES	DR	33426
1015		QUANTUM LAKES	DR	33426
1017		QUANTUM LAKES	DR	33426
1019		QUANTUM LAKES	DR	33426
1021		QUANTUM LAKES	DR	33426
1026		QUANTUM LAKES	DR	33426
1027		QUANTUM LAKES	DR	33426
1029		QUANTUM LAKES	DR	33426
1031		QUANTUM LAKES	DR	33426
1033		QUANTUM LAKES	DR	33426
1035		QUANTUM LAKES	DR	33426
1037		QUANTUM LAKES	DR	33426
1039		QUANTUM LAKES	DR	33426
1041		QUANTUM LAKES	DR	33426
1043		QUANTUM LAKES	DR	33426
1045		QUANTUM LAKES	DR	33426
1047		QUANTUM LAKES	DR	33426
1052		QUANTUM LAKES	DR	33426
1053		QUANTUM LAKES	DR	33426
1055		QUANTUM LAKES	DR	33426
1057		QUANTUM LAKES	DR	33426
1059		QUANTUM LAKES	DR	33426
1061		QUANTUM LAKES	DR	33426
1063		QUANTUM LAKES	DR	33426
1065		QUANTUM LAKES	DR	33426
1067		QUANTUM LAKES	DR	33426
1069		QUANTUM LAKES	DR	33426
1071		QUANTUM LAKES	DR	33426
1073		QUANTUM LAKES	DR	33426
1074		QUANTUM LAKES	DR	33426
1084		QUANTUM LAKES	DR	33426
2400		QUANTUM LAKES	DR	33426
2442		QUANTUM LAKES	DR	33426
2444		QUANTUM LAKES	DR	33426
2446		QUANTUM LAKES	DR	33426
2448		QUANTUM LAKES	DR	33426
2450		QUANTUM LAKES	DR	33426
2452		QUANTUM LAKES	DR	33426
2454		QUANTUM LAKES	DR	33426
2456		QUANTUM LAKES	DR	33426

**CITY OF BOYNTON BEACH MUNICIPAL FIREFIGHTERS'
PENSION TRUST FUND**

Schedule of City Addresses Not in the State's Point Match System (Continued)

2458		QUANTUM LAKES	DR	33426
2462		QUANTUM LAKES	DR	33426
2464		QUANTUM LAKES	DR	33426
2466		QUANTUM LAKES	DR	33426
2468		QUANTUM LAKES	DR	33426
2472		QUANTUM LAKES	DR	33426
2474		QUANTUM LAKES	DR	33426
2476		QUANTUM LAKES	DR	33426
2478		QUANTUM LAKES	DR	33426
2482		QUANTUM LAKES	DR	33426
2484		QUANTUM LAKES	DR	33426
2486		QUANTUM LAKES	DR	33426
2488		QUANTUM LAKES	DR	33426
2492		QUANTUM LAKES	DR	33426
2494		QUANTUM LAKES	DR	33426
2496		QUANTUM LAKES	DR	33426
2498		QUANTUM LAKES	DR	33426
2563		QUANTUM LAKES	DR	33426
2570		QUANTUM LAKES	DR	33426
2587		QUANTUM LAKES	DR	33426
2598		QUANTUM LAKES	DR	33426
2627		QUANTUM LAKES	DR	33426
2651		QUANTUM LAKES	DR	33426
2655		QUANTUM LAKES	DR	33426
2679		QUANTUM LAKES	DR	33426
2701		QUANTUM LAKES	DR	33426
2721		QUANTUM LAKES	DR	33426
2745		QUANTUM LAKES	DR	33426
2773		QUANTUM LAKES	DR	33426
2793		QUANTUM LAKES	DR	33426
2833		QUANTUM LAKES	DR	33426
2853		QUANTUM LAKES	DR	33426
2870		QUANTUM LAKES	DR	33426
2873		QUANTUM LAKES	DR	33426
2897		QUANTUM LAKES	DR	33426
2903		QUANTUM LAKES	DR	33426
2905		QUANTUM LAKES	DR	33426
2907		QUANTUM LAKES	DR	33426
2909		QUANTUM LAKES	DR	33426
2911		QUANTUM LAKES	DR	33426
2913		QUANTUM LAKES	DR	33426
2915		QUANTUM LAKES	DR	33426
2917		QUANTUM LAKES	DR	33426
2919		QUANTUM LAKES	DR	33426
2921		QUANTUM LAKES	DR	33426
2923		QUANTUM LAKES	DR	33426
2925		QUANTUM LAKES	DR	33426

**CITY OF BOYNTON BEACH MUNICIPAL FIREFIGHTERS'
PENSION TRUST FUND**

Schedule of City Addresses Not in the State's Point Match System (Continued)

2927		QUANTUM LAKES	DR	33426
2929		QUANTUM LAKES	DR	33426
2931		QUANTUM LAKES	DR	33426
2933		QUANTUM LAKES	DR	33426
2935		QUANTUM LAKES	DR	33426
2937		QUANTUM LAKES	DR	33426
2939		QUANTUM LAKES	DR	33426
2941		QUANTUM LAKES	DR	33426
2943		QUANTUM LAKES	DR	33426
2945		QUANTUM LAKES	DR	33426
2947		QUANTUM LAKES	DR	33426
2949		QUANTUM LAKES	DR	33426
2951		QUANTUM LAKES	DR	33426
2953		QUANTUM LAKES	DR	33426
2955		QUANTUM LAKES	DR	33426
2957		QUANTUM LAKES	DR	33426
2959		QUANTUM LAKES	DR	33426
2961		QUANTUM LAKES	DR	33426
2963		QUANTUM LAKES	DR	33426
2965		QUANTUM LAKES	DR	33426
2967		QUANTUM LAKES	DR	33426
2969		QUANTUM LAKES	DR	33426
2971		QUANTUM LAKES	DR	33426
2973		QUANTUM LAKES	DR	33426
2975		QUANTUM LAKES	DR	33426
2977		QUANTUM LAKES	DR	33426
2979		QUANTUM LAKES	DR	33426
2981		QUANTUM LAKES	DR	33426
2983		QUANTUM LAKES	DR	33426
2985		QUANTUM LAKES	DR	33426
2987		QUANTUM LAKES	DR	33426
2989		QUANTUM LAKES	DR	33426
2991		QUANTUM LAKES	DR	33426
2993		QUANTUM LAKES	DR	33426
3004		QUANTUM LAKES	DR	33426
3005		QUANTUM LAKES	DR	33426
3045		QUANTUM LAKES	DR	33426
3085		QUANTUM LAKES	DR	33426
3103		QUANTUM LAKES	DR	33426
3105		QUANTUM LAKES	DR	33426
3107		QUANTUM LAKES	DR	33426
3109		QUANTUM LAKES	DR	33426
3111		QUANTUM LAKES	DR	33426
3113		QUANTUM LAKES	DR	33426
3115		QUANTUM LAKES	DR	33426
3117		QUANTUM LAKES	DR	33426
3119		QUANTUM LAKES	DR	33426

**CITY OF BOYNTON BEACH MUNICIPAL FIREFIGHTERS'
PENSION TRUST FUND**

Schedule of City Addresses Not in the State's Point Match System (Continued)

3121		QUANTUM LAKES	DR	33426
3123		QUANTUM LAKES	DR	33426
3125		QUANTUM LAKES	DR	33426
3127		QUANTUM LAKES	DR	33426
3129		QUANTUM LAKES	DR	33426
3131		QUANTUM LAKES	DR	33426
3133		QUANTUM LAKES	DR	33426
3135		QUANTUM LAKES	DR	33426
3137		QUANTUM LAKES	DR	33426
3139		QUANTUM LAKES	DR	33426
3141		QUANTUM LAKES	DR	33426
3143		QUANTUM LAKES	DR	33426
3145		QUANTUM LAKES	DR	33426
3147		QUANTUM LAKES	DR	33426
3149		QUANTUM LAKES	DR	33426
3151		QUANTUM LAKES	DR	33426
3153		QUANTUM LAKES	DR	33426
3155		QUANTUM LAKES	DR	33426
3157		QUANTUM LAKES	DR	33426
3159		QUANTUM LAKES	DR	33426
3161		QUANTUM LAKES	DR	33426
3163		QUANTUM LAKES	DR	33426
3165		QUANTUM LAKES	DR	33426
3167		QUANTUM LAKES	DR	33426
3169		QUANTUM LAKES	DR	33426
3193		QUANTUM LAKES	DR	33426
3229		QUANTUM LAKES	DR	33426
3240		QUANTUM LAKES	DR	33426
3265		QUANTUM LAKES	DR	33426
3301		QUANTUM LAKES	DR	33426
3336		QUANTUM LAKES	DR	33426
3337		QUANTUM LAKES	DR	33426
3373		QUANTUM LAKES	DR	33426
3410		QUANTUM LAKES	DR	33426
3411		QUANTUM LAKES	DR	33426
3447		QUANTUM LAKES	DR	33426
3483		QUANTUM LAKES	DR	33426
3519		QUANTUM LAKES	DR	33426
3591		QUANTUM LAKES	DR	33426
3627		QUANTUM LAKES	DR	33426
4996		QUANTUM LAKES	DR	33426
4998		QUANTUM LAKES	DR	33426
1005	N	RAILROAD	AVE	33435
805		RENAISSANCE COMMONS	BLVD	33426
825		RENAISSANCE COMMONS	BLVD	33426
845		RENAISSANCE COMMONS	BLVD	33426
865		RENAISSANCE COMMONS	BLVD	33426

**CITY OF BOYNTON BEACH MUNICIPAL FIREFIGHTERS'
PENSION TRUST FUND**

Schedule of City Addresses Not in the State's Point Match System (Continued)

1002		RENAISSANCE COMMONS	BLVD	33426
1507		RENAISSANCE COMMONS	BLVD	33426
1553		RENAISSANCE COMMONS	BLVD	33426
1655		RENAISSANCE COMMONS	BLVD	33426
1675		RENAISSANCE COMMONS	BLVD	33426
1841		RENAISSANCE COMMONS	BLVD	33426
1180		RIALTO	DR	33436
2095	E	RIDGE	CIR	33435
2097	E	RIDGE	CIR	33435
2105	E	RIDGE	CIR	33435
3260		RIDGE	LN	33435
3212		RIDGE HILL	RD	33435
1		RIVIERA	DR	33435
4100		ROXBURY	CT	33436
4200		ROXBURY	CT	33436
4300		ROXBURY	CT	33436
4400		ROXBURY	CT	33436
4500		ROXBURY	CT	33436
4600		ROXBURY	CT	33436
4700		ROXBURY	CT	33436
4800		ROXBURY	CT	33436
4900		ROXBURY	CT	33436
4167		ROYAL MANOR	BLVD	33436
4219		ROYAL MANOR	BLVD	33436
4335		ROYAL MANOR	BLVD	33436
1		SANDLEWOOD	DR	33436
165		SAUSALITO	DR	33436
202		SAVANNAH LAKES	DR	33436
206		SAVANNAH LAKES	DR	33436
208		SAVANNAH LAKES	DR	33436
301		SAVANNAH LAKES	DR	33436
303		SAVANNAH LAKES	DR	33436
305		SAVANNAH LAKES	DR	33436
401		SAVANNAH LAKES	DR	33436
403		SAVANNAH LAKES	DR	33436
405		SAVANNAH LAKES	DR	33436
407		SAVANNAH LAKES	DR	33436
603		SAVANNAH LAKES	DR	33436
605		SAVANNAH LAKES	DR	33436
900		SAVANNAH LAKES	DR	33436
903		SAVANNAH LAKES	DR	33436
905		SAVANNAH LAKES	DR	33436
8		SCARBROUGH	LN	33436
13		SCARBROUGH	LN	33436
107		SCARBROUGH	LN	33436
800		SCARBROUGH	LN	33436
1300		SCARBROUGH	LN	33436

**CITY OF BOYNTON BEACH MUNICIPAL FIREFIGHTERS'
PENSION TRUST FUND**

Schedule of City Addresses Not in the State's Point Match System (Continued)

104		SEACREST	CT	33435
525	N	SEACREST	BLVD	33435
631	N	SEACREST	BLVD	33435
802	N	SEACREST	BLVD	33435
905	N	SEACREST	BLVD	33435
909	N	SEACREST	BLVD	33435
911	N	SEACREST	BLVD	33435
970	N	SEACREST	BLVD	33435
1002	N	SEACREST	BLVD	33435
1013	N	SEACREST	BLVD	33435
1315	S	SEACREST	BLVD	33435
1600	S	SEACREST	BLVD	3.34E+08
1601	S	SEACREST	BLVD	33435
1624	S	SEACREST	BLVD	33435
1891	N	SEACREST	BLVD	33435
2824	S	SEACREST	BLVD	33435
3003	N	SEACREST	BLVD	33435
3479	S	SEACREST	BLVD	33435
601		SEALOFTS	DR	33426
602		SEALOFTS	DR	33426
603		SEALOFTS	DR	33426
604		SEALOFTS	DR	33426
605		SEALOFTS	DR	33426
606		SEALOFTS	DR	33426
607		SEALOFTS	DR	33426
608		SEALOFTS	DR	33426
609		SEALOFTS	DR	33426
610		SEALOFTS	DR	33426
612		SEALOFTS	DR	33426
614		SEALOFTS	DR	33426
616		SEALOFTS	DR	33426
618		SEALOFTS	DR	33426
619		SEALOFTS	DR	33426
621		SEALOFTS	DR	33426
623		SEALOFTS	DR	33426
625		SEALOFTS	DR	33426
627		SEALOFTS	DR	33426
629		SEALOFTS	DR	33426
634		SEALOFTS	DR	33426
598		SEAVIEW PARK	DR	33435
7969		SHADDOCK	DR	33436
654		SNUG HARBOR	DR	33435
96		SOUTH	BLVD	33435
820		SOUTH	RD	33435
1800		SOUTHERN CROSS	CIR	33436
41		SOUTHPORT	LN	33436
42		SOUTHPORT	LN	33436

**CITY OF BOYNTON BEACH MUNICIPAL FIREFIGHTERS'
PENSION TRUST FUND**

Schedule of City Addresses Not in the State's Point Match System (Continued)

2600		SPICEBERRY	LN	33436
104		SPRUCE	ST	33426
105		SPRUCE	ST	33426
118		SPRUCE	ST	33426
121		SPRUCE	ST	33426
132		SPRUCE	ST	33426
135		SPRUCE	ST	33426
300		SPRUCE	ST	33426
301		SPRUCE	ST	33426
313		SPRUCE	ST	33426
314		SPRUCE	ST	33426
329		SPRUCE	ST	33426
332		SPRUCE	ST	33426
1723		STONEHAVEN	DR	33436
1820		STONEHAVEN	DR	33436
26		STRATFORD	DR	33436
42		STRATFORD	DR	33436
53		STRATFORD	LN	33436
54		STRATFORD	LN	33436
3500		SUMMIT	BLVD	33436
950		SUNSET	RD	33435
3813	N	SUNSET	RD	33483
15		SUTTON	DR	33436
100		SUTTON	DR	33436
144	W	TARA LAKES	DR	33436
5199		TARTAN LAKES	BLVD	33472
2000		TUSCANY	WAY	33435
3000		TUSCANY	WAY	33435
3418		TUSCANY	WAY	33435
3419		TUSCANY	WAY	33435
3420		TUSCANY	WAY	33435
3421		TUSCANY	WAY	33435
3422		TUSCANY	WAY	33435
4000		TUSCANY	WAY	33435
24		TYBEE	CIR	33436
25		TYBEE	CIR	33436
2400		TYBEE	CIR	33436
2500		TYBEE	CIR	33436
2520		VENETIAN	CT	33426
501		VENICE	DR	33426
140		VIA DE CASAS NORTE		33426
24		VIA DE CASAS SUR		33426
1745		VIA GRANADA		33426
10		VIA LAGO		33435
950		VIA LUGANO	CIR	33436
33		VICTORY	CIR	33436
37		VICTORY	CIR	33436

**CITY OF BOYNTON BEACH MUNICIPAL FIREFIGHTERS'
PENSION TRUST FUND**

Schedule of City Addresses Not in the State's Point Match System (Continued)

38		VICTORY	CIR	33436
131		VICTORY	CIR	33436
201		VICTORY	CIR	33436
999		VICTORY	CIR	33436
1008		VICTORY	CIR	33436
1103		VICTORY	CIR	3.34E+08
3200		VICTORY	CIR	33436
3600		VICTORY	CIR	33436
3700		VICTORY	CIR	33436
3800		VICTORY	CIR	33436
34		VILLA	LN	33436
100		VILLA	CIR	33435
200		VILLA	CIR	33435
300		VILLA	CIR	33435
400		VILLA	CIR	33435
500		VILLA	CIR	33435
600		VILLA	CIR	33435
700		VILLA	CIR	33435
800		VILLA	CIR	33435
900		VILLA	CIR	33435
1000		VILLA	CIR	33435
1100		VILLA	CIR	33435
1200		VILLA	CIR	33435
1300		VILLA	CIR	33435
810		VIRGINIA GARDEN	DR	33435
822		VIRGINIA GARDEN	DR	33435
836		VIRGINIA GARDEN	DR	33435
700		WATERSIDE	CIR	33435
3181		WATERSIDE	CIR	33435
100		WELLESLEY	LN	33436
0		WESTGATE	LN	33436
37		WESTGATE	LN	33436
5000		WHEATLEY	CT	33436
5100		WHEATLEY	CT	33436
5200		WHEATLEY	CT	33436
5300		WHEATLEY	CT	33436
5400		WHEATLEY	CT	33436
5500		WHEATLEY	CT	33436
5600		WHEATLEY	CT	33436
5700		WHEATLEY	CT	33436
5800		WHEATLEY	CT	33436
5900		WHEATLEY	CT	33436
6000		WHEATLEY	CT	33436
6100		WHEATLEY	CT	33436
6200		WHEATLEY	CT	33436
6300		WHEATLEY	CT	33436
8183		WHITE ROCK	CIR	33436

**CITY OF BOYNTON BEACH MUNICIPAL FIREFIGHTERS’
PENSION TRUST FUND**

Schedule of City Addresses Not in the State’s Point Match System (Continued)

393		WINCHESTER PARK	BLVD	33436
36		WINDSOR	DR	33436
66		WINDSOR	CIR	33436
28		WOOD FERN	DR	33436
29		WOOD FERN	DR	33436
30		WOOD FERN	DR	33436
31		WOOD FERN	DR	33436
32		WOOD FERN	DR	33436
33		WOOD FERN	DR	33436
34		WOOD FERN	DR	33436
35		WOOD FERN	DR	33436
36		WOOD FERN	DR	33436
37		WOOD FERN	DR	33436
38		WOOD FERN	DR	33436
39		WOOD FERN	DR	33436
40		WOOD FERN	DR	33436
41		WOOD FERN	DR	33436
42		WOOD FERN	DR	33436
59		WOODS	LN	33436
101	W	WOOLBRIGHT	RD	33426
125	E	WOOLBRIGHT	RD	33435
512	E	WOOLBRIGHT	RD	3.34E+08
522	E	WOOLBRIGHT	RD	33435
544	E	WOOLBRIGHT	RD	33435
552	E	WOOLBRIGHT	RD	33435
554	E	WOOLBRIGHT	RD	33435
556	E	WOOLBRIGHT	RD	33435
568	E	WOOLBRIGHT	RD	33435
574	E	WOOLBRIGHT	RD	33435
578	E	WOOLBRIGHT	RD	33435
650	E	WOOLBRIGHT	RD	33435
661	E	WOOLBRIGHT	RD	33435
850	W	WOOLBRIGHT	RD	33426
1600	W	WOOLBRIGHT	RD	33426
1879	W	WOOLBRIGHT	RD	33426
1881	W	WOOLBRIGHT	RD	33426
1883	W	WOOLBRIGHT	RD	33426
2315	W	WOOLBRIGHT	RD	33426

Schedule of Addresses
Not in the City's Master List of Addresses (1,309)

CITY OF BOYNTON BEACH MUNICIPAL FIREFIGHTERS'
PENSION TRUST FUND

Schedule of addresses on the State's point match system
Not in the City's master list of addresses

106	SW	10TH	CT	33426
107	SW	10TH	CT	33426
108	SW	10TH	CT	33426
110	SW	10TH	CT	33426
111	SW	10TH	CT	33426
112	SW	10TH	CT	33426
113	SW	10TH	CT	33426
114	SW	10TH	CT	33426
115	SW	10TH	AVE	33435
115	SW	10TH	CT	33426
116	SW	10TH	CT	33426
117	SW	10TH	CT	33426
118	SW	10TH	CT	33426
120	SW	10TH	CT	33426
121	SW	10TH	CT	33426
122	SW	10TH	CT	33426
123	SW	10TH	CT	33426
124	SW	10TH	AVE	33435
124	SW	10TH	CT	33426
135	SW	10TH	AVE	33435
138	SW	10TH	AVE	33435
141	SW	10TH	AVE	33435
211	SW	10TH	AVE	33435
2590	SW	10TH	ST	33426
106	SE	11TH	AVE	33435
110	SW	11TH	AVE	33435
111	SE	11TH	AVE	33435
111	SW	11TH	AVE	33435
114	SE	11TH	AVE	33435
114	SW	11TH	AVE	33435
115	SW	11TH	AVE	33435
120	NW	11TH	AVE	33435
120	SW	11TH	AVE	33435
121	SW	11TH	AVE	33435
124	SW	11TH	AVE	33435
127	SW	11TH	AVE	33435
128	SE	11TH	AVE	33435
128	SW	11TH	AVE	33435
132	SW	11TH	AVE	33435
133	SW	11TH	AVE	33435
139	SW	11TH	AVE	33435
209	SW	11TH	AVE	33435
212	NW	11TH	AVE	33435
212	SW	11TH	AVE	33435
215	SW	11TH	AVE	33435
218	SW	11TH	AVE	33435
219	NW	11TH	AVE	33435

CITY OF BOYNTON BEACH MUNICIPAL FIREFIGHTERS'
PENSION TRUST FUND

Schedule of addresses on the State's point match system
Not in the City's master list of addresses

223	SW	11TH	AVE	33435
230	NW	11TH	AVE	33435
231	SW	11TH	AVE	33435
233	NE	11TH	AVE	33435
234	SW	11TH	AVE	33435
235	NW	11TH	AVE	33435
239	NE	11TH	AVE	33435
309	NW	11TH	AVE	33435
312	SW	11TH	AVE	33435
317	SW	11TH	AVE	33435
331	SW	11TH	AVE	33435
334	SW	11TH	AVE	33435
339	SW	11TH	AVE	33435
404	NE	11TH	AVE	33435
407	NW	11TH	AVE	33435
409	NW	11TH	AVE	33435
417	NW	11TH	AVE	33435
419	NW	11TH	AVE	33435
972	NW	11TH	ST	33426
102	SW	12TH	AVE	33435
104	SE	12TH	AVE	33435
111	SE	12TH	AVE	33435
111	SW	12TH	AVE	33435
112	SE	12TH	AVE	33435
120	SE	12TH	AVE	33435
120	SW	12TH	AVE	33435
127	SW	12TH	AVE	33435
130	SW	12TH	AVE	33435
131	SE	12TH	AVE	33435
132	SE	12TH	AVE	33435
136	SW	12TH	AVE	33435
141	SW	12TH	AVE	33435
206	SW	12TH	AVE	33435
207	SW	12TH	AVE	33435
212	NW	12TH	AVE	33435
212	SW	12TH	AVE	33435
213	SW	12TH	AVE	33435
218	NW	12TH	AVE	33435
218	SW	12TH	AVE	33435
222	NW	12TH	AVE	33435
300	SW	12TH	AVE	33435
301	SW	12TH	AVE	33435
308	NW	12TH	AVE	33435
311	NW	12TH	AVE	33435
312	NW	12TH	AVE	33435
312	SW	12TH	AVE	33435
315	SW	12TH	AVE	33435

CITY OF BOYNTON BEACH MUNICIPAL FIREFIGHTERS'
PENSION TRUST FUND

Schedule of addresses on the State's point match system
Not in the City's master list of addresses

329	SW	12TH	AVE	33435
330	SW	12TH	AVE	33435
333	SW	12TH	AVE	33435
401	SE	12TH	AVE	33435
404	SE	12TH	AVE	33435
405	NW	12TH	AVE	33435
409	NW	12TH	AVE	33435
410	SE	12TH	AVE	33435
412	NW	12TH	AVE	33435
413	NW	12TH	AVE	33435
422	NW	12TH	AVE	33435
107	SW	13TH	AVE	33435
110	SE	13TH	AVE	33435
110	SW	13TH	AVE	33435
115	SE	13TH	AVE	33435
116	SE	13TH	AVE	33435
117	SW	13TH	AVE	33435
119	NW	13TH	AVE	33435
120	SE	13TH	AVE	33435
120	SW	13TH	AVE	33435
121	SE	13TH	AVE	33435
122	SW	13TH	AVE	33435
123	SW	13TH	AVE	33435
125	NW	13TH	AVE	33435
125	SW	13TH	AVE	33435
126	SE	13TH	AVE	33435
126	SW	13TH	AVE	33435
128	SE	13TH	AVE	33435
129	SE	13TH	AVE	33435
130	SE	13TH	AVE	33435
130	SW	13TH	AVE	33435
131	SW	13TH	AVE	33435
137	SW	13TH	AVE	33435
141	SE	13TH	AVE	33435
142	SW	13TH	AVE	33435
218	SW	13TH	AVE	33435
226	SW	13TH	AVE	33435
227	SW	13TH	AVE	33435
301	SW	13TH	AVE	33435
306	SW	13TH	AVE	33435
321	SW	13TH	AVE	33435
329	SW	13TH	AVE	33435
333	SW	13TH	AVE	33435
399	NW	13TH	AVE	33435
402	NW	13TH	AVE	33435
404	NW	13TH	AVE	33435
406	NW	13TH	AVE	33435

CITY OF BOYNTON BEACH MUNICIPAL FIREFIGHTERS'
PENSION TRUST FUND

Schedule of addresses on the State's point match system
Not in the City's master list of addresses

407	NW	13TH	AVE	33435
417	NW	13TH	AVE	33435
418	NW	13TH	AVE	33435
914	NW	13TH	AVE	33426
2830	SW	13TH	CT	33426
110	SE	14TH	AVE	33435
111	SW	14TH	AVE	33435
114	SW	14TH	AVE	33435
115	SE	14TH	AVE	33435
117	SW	14TH	ST	33426
118	SW	14TH	ST	33426
119	SW	14TH	ST	33426
120	SW	14TH	AVE	33435
120	SW	14TH	ST	33426
121	SE	14TH	AVE	33435
121	SW	14TH	ST	33426
122	SW	14TH	ST	33426
123	SW	14TH	ST	33426
124	SW	14TH	ST	33426
127	SE	14TH	AVE	33435
130	SE	14TH	AVE	33435
130	SW	14TH	AVE	33435
133	SE	14TH	AVE	33435
134	SW	14TH	AVE	33435
136	SW	14TH	AVE	33435
140	SW	14TH	AVE	33435
141	SW	14TH	AVE	33435
142	SW	14TH	AVE	33435
200	SW	14TH	AVE	33435
206	SW	14TH	AVE	33435
210	NW	14TH	AVE	33435
212	SW	14TH	AVE	33435
218	SW	14TH	AVE	33435
308	SW	14TH	AVE	33435
318	SW	14TH	AVE	33435
326	SW	14TH	AVE	33435
337	SW	14TH	AVE	33435
3271	SW	14TH	PL	33426
3273	SW	14TH	PL	33426
3279	SW	14TH	PL	33426
402	NW	15TH	AVE	33435
403	NW	15TH	AVE	33435
408	NW	15TH	AVE	33435
261	NW	16TH	CT	33435
405	NW	16TH	AVE	33435
406	NW	16TH	AVE	33435
290	NW	17TH	AVE	33435

CITY OF BOYNTON BEACH MUNICIPAL FIREFIGHTERS'
PENSION TRUST FUND

Schedule of addresses on the State's point match system
Not in the City's master list of addresses

310	NW	17TH	AVE	33435
420	NE	17TH	AVE	33435
117	NE	1ST	AVE	33435
201	NW	1ST	AVE	33435
204	SW	1ST	AVE	33435
206	SW	1ST	AVE	33435
208	NW	1ST	AVE	33435
208	SE	1ST	AVE	33435
208	SW	1ST	AVE	33435
210	NW	1ST	AVE	33435
210	SW	1ST	AVE	33435
212	SE	1ST	AVE	33435
214	SW	1ST	AVE	33435
215	SW	1ST	AVE	33435
216	SE	1ST	AVE	33435
216	SW	1ST	AVE	33435
219	SE	1ST	AVE	33435
220	SW	1ST	AVE	33435
222	SE	1ST	AVE	33435
222	SW	1ST	AVE	33435
225	SW	1ST	AVE	33435
229	SE	1ST	AVE	33435
229	SW	1ST	AVE	33435
230	SW	1ST	AVE	33435
306	NW	1ST	AVE	33435
306	SE	1ST	AVE	33435
310	SW	1ST	AVE	33435
316	SW	1ST	AVE	33435
411	SW	1ST	AVE	33435
412	SW	1ST	ST	33435
414	SW	1ST	ST	33435
420	SW	1ST	AVE	33435
426	SW	1ST	AVE	33435
426	SW	1ST	ST	33435
434	SW	1ST	AVE	33435
502	SW	1ST	ST	33435
508	SW	1ST	ST	33435
512	SE	1ST	ST	33435
512	SW	1ST	ST	33435
518	SW	1ST	ST	33435
522	SW	1ST	ST	33435
604	SW	1ST	AVE	33426
606	SW	1ST	ST	33435
607	SW	1ST	ST	33435
608	SW	1ST	ST	33435
609	SW	1ST	ST	33435
611	SW	1ST	AVE	33426

CITY OF BOYNTON BEACH MUNICIPAL FIREFIGHTERS'
PENSION TRUST FUND

Schedule of addresses on the State's point match system
Not in the City's master list of addresses

612	SW	1ST	ST	33435
613	SW	1ST	AVE	33426
614	SW	1ST	ST	33435
616	SW	1ST	AVE	33426
616	SE	1ST	ST	33435
616	SW	1ST	ST	33435
618	SW	1ST	ST	33435
620	SW	1ST	ST	33435
622	SW	1ST	AVE	33426
708	SW	1ST	AVE	33426
716	SW	1ST	AVE	33426
730	SW	1ST	AVE	33426
735	SW	1ST	CT	33426
746	SW	1ST	AVE	33426
1106	SE	1ST	ST	33435
1112	SW	1ST	ST	33435
1114	SE	1ST	ST	33435
1210	SE	1ST	ST	33435
1212	NE	1ST	ST	33435
1601	NW	1ST	CT	33435
1610	NW	1ST	CT	33435
1611	NW	1ST	CT	33435
2130	NW	1ST	ST	33435
2141	NW	1ST	ST	33435
2151	NW	1ST	ST	33435
2400	SW	1ST	ST	33435
2401	SW	1ST	ST	33435
2601	NW	1ST	ST	33435
2650	NW	1ST	ST	33435
2651	NW	1ST	ST	33435
2671	NW	1ST	ST	33435
2701	NW	1ST	ST	33435
2731	NW	1ST	ST	33435
2751	NW	1ST	ST	33435
2761	NW	1ST	ST	33435
3604	SE	1ST	ST	33435
504	SE	20TH	AVE	33435
515	SE	20TH	AVE	33435
520	SE	20TH	AVE	33435
526	SE	20TH	AVE	33435
2206	SW	21ST	WAY	33426
910	SW	22ND	WAY	33426
1805	SW	22ND	AVE	33426
304	SE	23RD	AVE	33435
310	SE	23RD	AVE	33435
316	SE	23RD	AVE	33435
322	SE	23RD	AVE	33435

CITY OF BOYNTON BEACH MUNICIPAL FIREFIGHTERS'
PENSION TRUST FUND

Schedule of addresses on the State's point match system
Not in the City's master list of addresses

328	SE	23RD	AVE	33435
335	SE	23RD	AVE	33435
404	SE	23RD	AVE	33435
405	SE	23RD	AVE	33435
130	SW	24TH	AVE	33435
118	SW	25TH	AVE	33435
124	SW	25TH	AVE	33435
132	SW	25TH	AVE	33435
141	SW	25TH	AVE	33435
147	SW	25TH	AVE	33435
406	NW	25TH	AVE	33426
412	NW	25TH	AVE	33426
1223	SW	25TH	PL	33426
101	SE	27TH	AVE	33435
131	SE	27TH	AVE	33435
170	SE	27TH	AVE	33435
170	SE	27TH	CT	33435
171	SE	27TH	CT	33435
716	SW	27TH	PL	33435
381	NE	28TH	CT	33435
1153	SW	28TH	AVE	33426
120	SW	2ND	AVE	33435
125	SE	2ND	AVE	33435
136	SW	2ND	AVE	33435
145	SE	2ND	AVE	33435
209	SW	2ND	AVE	33435
217	SW	2ND	AVE	33435
220	SW	2ND	AVE	33435
221	SW	2ND	AVE	33435
302	SW	2ND	ST	33435
320	SW	2ND	ST	33435
407	NW	2ND	ST	33435
417	NW	2ND	ST	33435
420	NW	2ND	ST	33435
509	NW	2ND	ST	33435
515	NW	2ND	ST	33435
518	NW	2ND	ST	33435
521	NW	2ND	ST	33435
622	SE	2ND	AVE	33435
625	SW	2ND	AVE	33426
650	SW	2ND	AVE	33426
1208	NE	2ND	ST	33435
1510	SW	2ND	ST	33435
1511	SW	2ND	ST	33435
2511	SE	2ND	ST	33435
2651	SE	2ND	ST	33435
2720	SE	2ND	ST	33435

CITY OF BOYNTON BEACH MUNICIPAL FIREFIGHTERS'
PENSION TRUST FUND

Schedule of addresses on the State's point match system
Not in the City's master list of addresses

612	SW	1ST	ST	33435
613	SW	1ST	AVE	33426
614	SW	1ST	ST	33435
616	SW	1ST	AVE	33426
616	SE	1ST	ST	33435
616	SW	1ST	ST	33435
618	SW	1ST	ST	33435
620	SW	1ST	ST	33435
622	SW	1ST	AVE	33426
708	SW	1ST	AVE	33426
716	SW	1ST	AVE	33426
730	SW	1ST	AVE	33426
735	SW	1ST	CT	33426
746	SW	1ST	AVE	33426
1106	SE	1ST	ST	33435
1112	SW	1ST	ST	33435
1114	SE	1ST	ST	33435
1210	SE	1ST	ST	33435
1212	NE	1ST	ST	33435
1601	NW	1ST	CT	33435
1610	NW	1ST	CT	33435
1611	NW	1ST	CT	33435
2130	NW	1ST	ST	33435
2141	NW	1ST	ST	33435
2151	NW	1ST	ST	33435
2400	SW	1ST	ST	33435
2401	SW	1ST	ST	33435
2601	NW	1ST	ST	33435
2650	NW	1ST	ST	33435
2651	NW	1ST	ST	33435
2671	NW	1ST	ST	33435
2701	NW	1ST	ST	33435
2731	NW	1ST	ST	33435
2751	NW	1ST	ST	33435
2761	NW	1ST	ST	33435
3604	SE	1ST	ST	33435
504	SE	20TH	AVE	33435
515	SE	20TH	AVE	33435
520	SE	20TH	AVE	33435
526	SE	20TH	AVE	33435
2206	SW	21ST	WAY	33426
910	SW	22ND	WAY	33426
1805	SW	22ND	AVE	33426
304	SE	23RD	AVE	33435
310	SE	23RD	AVE	33435
316	SE	23RD	AVE	33435
322	SE	23RD	AVE	33435

CITY OF BOYNTON BEACH MUNICIPAL FIREFIGHTERS'
PENSION TRUST FUND

Schedule of addresses on the State's point match system
Not in the City's master list of addresses

328	SE	23RD	AVE	33435
335	SE	23RD	AVE	33435
404	SE	23RD	AVE	33435
405	SE	23RD	AVE	33435
130	SW	24TH	AVE	33435
118	SW	25TH	AVE	33435
124	SW	25TH	AVE	33435
132	SW	25TH	AVE	33435
141	SW	25TH	AVE	33435
147	SW	25TH	AVE	33435
406	NW	25TH	AVE	33426
412	NW	25TH	AVE	33426
1223	SW	25TH	PL	33426
101	SE	27TH	AVE	33435
131	SE	27TH	AVE	33435
170	SE	27TH	AVE	33435
170	SE	27TH	CT	33435
171	SE	27TH	CT	33435
716	SW	27TH	PL	33435
381	NE	28TH	CT	33435
1153	SW	28TH	AVE	33426
120	SW	2ND	AVE	33435
125	SE	2ND	AVE	33435
136	SW	2ND	AVE	33435
145	SE	2ND	AVE	33435
209	SW	2ND	AVE	33435
217	SW	2ND	AVE	33435
220	SW	2ND	AVE	33435
221	SW	2ND	AVE	33435
302	SW	2ND	ST	33435
320	SW	2ND	ST	33435
407	NW	2ND	ST	33435
417	NW	2ND	ST	33435
420	NW	2ND	ST	33435
509	NW	2ND	ST	33435
515	NW	2ND	ST	33435
518	NW	2ND	ST	33435
521	NW	2ND	ST	33435
622	SE	2ND	AVE	33435
625	SW	2ND	AVE	33426
650	SW	2ND	AVE	33426
1208	NE	2ND	ST	33435
1510	SW	2ND	ST	33435
1511	SW	2ND	ST	33435
2511	SE	2ND	ST	33435
2651	SE	2ND	ST	33435
2720	SE	2ND	ST	33435

CITY OF BOYNTON BEACH MUNICIPAL FIREFIGHTERS'
PENSION TRUST FUND

Schedule of addresses on the State's point match system
Not in the City's master list of addresses

2740	SE	2ND	ST	33435
2760	SE	2ND	ST	33435
2780	SE	2ND	ST	33435
3250	SE	2ND	ST	33435
310	SE	34TH	AVE	33435
110	SE	3RD	AVE	33435
111	NW	3RD	AVE	33435
111	SE	3RD	AVE	33435
111	SW	3RD	AVE	33435
115	SE	3RD	AVE	33435
116	SE	3RD	AVE	33435
119	SW	3RD	AVE	33435
120	SE	3RD	AVE	33435
123	SW	3RD	AVE	33435
125	SE	3RD	AVE	33435
126	SE	3RD	AVE	33435
130	SE	3RD	AVE	33435
131	SE	3RD	AVE	33435
135	SW	3RD	AVE	33435
137	SE	3RD	AVE	33435
206	SW	3RD	AVE	33435
206	NW	3RD	ST	33435
206	SW	3RD	ST	33435
212	SE	3RD	AVE	33435
213	SW	3RD	AVE	33435
214	SE	3RD	AVE	33435
214	NW	3RD	ST	33435
215	SW	3RD	ST	33435
216	SE	3RD	AVE	33435
216	SE	3RD	ST	33435
217	SE	3RD	ST	33435
220	SW	3RD	AVE	33435
220	SW	3RD	ST	33435
222	SE	3RD	ST	33435
226	SW	3RD	AVE	33435
229	SE	3RD	AVE	33435
308	NW	3RD	ST	33435
309	SW	3RD	ST	33435
314	NW	3RD	ST	33435
322	NW	3RD	ST	33435
330	SW	3RD	ST	33435
402	SW	3RD	ST	33435
406	NW	3RD	ST	33435
410	SW	3RD	AVE	33435
410	NW	3RD	ST	33435
415	SW	3RD	AVE	33435
420	SW	3RD	AVE	33435

CITY OF BOYNTON BEACH MUNICIPAL FIREFIGHTERS'
PENSION TRUST FUND

Schedule of addresses on the State's point match system
Not in the City's master list of addresses

420	NW	3RD	ST	33435
421	SW	3RD	AVE	33435
501	SW	3RD	ST	33435
505	SW	3RD	ST	33435
601	SW	3RD	ST	33435
609	NE	3RD	ST	33435
613	NW	3RD	ST	33435
615	NW	3RD	ST	33435
657	SW	3RD	AVE	33426
707	SE	3RD	ST	33435
710	SE	3RD	ST	33435
720	SE	3RD	ST	33435
801	SE	3RD	ST	33435
805	SW	3RD	ST	33435
807	NW	3RD	ST	33435
811	SW	3RD	ST	33435
815	SE	3RD	ST	33435
815	SW	3RD	ST	33435
902	SE	3RD	ST	33435
909	SE	3RD	ST	33435
915	SW	3RD	ST	33435
921	SE	3RD	ST	33435
1005	NE	3RD	ST	33435
1009	NE	3RD	ST	33435
1020	SE	3RD	ST	33435
1114	SW	3RD	ST	33435
1316	SE	3RD	ST	33435
1400	SW	3RD	ST	33435
1401	SW	3RD	ST	33435
1601	NW	3RD	ST	33435
1611	NW	3RD	ST	33435
1613	SW	3RD	ST	33435
2202	SE	3RD	ST	33435
2210	SE	3RD	ST	33435
2214	SE	3RD	ST	33435
2219	SE	3RD	ST	33435
2310	SE	3RD	ST	33435
103	SE	4TH	AVE	33435
105	SE	4TH	AVE	33435
109	SE	4TH	AVE	33435
112	NW	4TH	AVE	33435
112	SW	4TH	AVE	33435
115	NW	4TH	AVE	33435
115	SW	4TH	AVE	33435
115	SW	4TH	ST	33435
116	SE	4TH	AVE	33435
116	SW	4TH	AVE	33435

CITY OF BOYNTON BEACH MUNICIPAL FIREFIGHTERS'
PENSION TRUST FUND

Schedule of addresses on the State's point match system
Not in the City's master list of addresses

117	SE	4TH	AVE	33435
121	SW	4TH	AVE	33435
122	SW	4TH	AVE	33435
124	NW	4TH	AVE	33435
125	SE	4TH	AVE	33435
132	SE	4TH	AVE	33435
145	SE	4TH	AVE	33435
216	SW	4TH	AVE	33435
219	SE	4TH	AVE	33435
221	SW	4TH	AVE	33435
221	SW	4TH	ST	33435
222	SE	4TH	AVE	33435
226	SW	4TH	AVE	33435
401	SW	4TH	ST	33435
403	SE	4TH	ST	33435
407	SE	4TH	ST	33435
413	SW	4TH	ST	33435
415	SW	4TH	AVE	33435
416	SW	4TH	AVE	33435
417	SE	4TH	AVE	33435
418	SE	4TH	AVE	33435
419	SW	4TH	AVE	33435
422	SE	4TH	ST	33435
425	SW	4TH	AVE	33435
506	SE	4TH	ST	33435
508	SE	4TH	ST	33435
701	SE	4TH	ST	33435
719	SE	4TH	ST	33435
809	SE	4TH	ST	33435
918	SW	4TH	ST	33435
920	SW	4TH	ST	33435
1500	NE	4TH	ST	33435
2215	SE	4TH	ST	33435
2407	SW	4TH	ST	33435
2411	SW	4TH	ST	33435
2503	NW	4TH	CT	33426
2508	SW	4TH	ST	33435
2509	NW	4TH	CT	33426
2511	SW	4TH	ST	33435
2512	SW	4TH	ST	33435
2520	SW	4TH	ST	33435
2708	SW	4TH	ST	33435
2710	SW	4TH	ST	33435
2841	SW	4TH	ST	33435
104	SE	5TH	AVE	33435
111	SW	5TH	AVE	33435
112	SW	5TH	AVE	33435

CITY OF BOYNTON BEACH MUNICIPAL FIREFIGHTERS'
PENSION TRUST FUND

Schedule of addresses on the State's point match system
Not in the City's master list of addresses

113	SE	5TH	AVE	33435
117	SE	5TH	AVE	33435
118	SE	5TH	AVE	33435
118	SW	5TH	AVE	33435
119	SW	5TH	AVE	33435
120	SE	5TH	AVE	33435
121	SE	5TH	AVE	33435
121	SW	5TH	AVE	33435
124	SW	5TH	AVE	33435
130	SE	5TH	AVE	33435
131	SE	5TH	AVE	33435
135	SE	5TH	AVE	33435
136	SE	5TH	AVE	33435
140	SE	5TH	AVE	33435
141	SE	5TH	AVE	33435
145	SE	5TH	AVE	33435
202	SW	5TH	AVE	33435
205	SE	5TH	AVE	33435
206	SE	5TH	AVE	33435
206	SW	5TH	AVE	33435
215	SW	5TH	AVE	33435
216	SW	5TH	AVE	33435
221	SW	5TH	AVE	33435
225	SW	5TH	AVE	33435
226	SW	5TH	AVE	33435
315	SW	5TH	AVE	33435
410	SW	5TH	AVE	33435
415	SW	5TH	AVE	33435
416	SW	5TH	AVE	33435
421	SW	5TH	AVE	33435
427	SW	5TH	AVE	33435
430	SW	5TH	AVE	33435
436	SW	5TH	AVE	33435
805	NW	5TH	AVE	33426
1001	SW	5TH	AVE	33426
101	SW	6TH	AVE	33435
103	NW	6TH	AVE	33435
109	NW	6TH	AVE	33435
109	SE	6TH	AVE	33435
111	SW	6TH	AVE	33435
112	SW	6TH	AVE	33435
115	NW	6TH	AVE	33435
115	SE	6TH	AVE	33435
115	SW	6TH	AVE	33435
118	SE	6TH	AVE	33435
118	SW	6TH	AVE	33435
119	SE	6TH	AVE	33435

CITY OF BOYNTON BEACH MUNICIPAL FIREFIGHTERS'
PENSION TRUST FUND

Schedule of addresses on the State's point match system
Not in the City's master list of addresses

122	SE	6TH	AVE	33435
123	SW	6TH	AVE	33435
125	NW	6TH	AVE	33435
125	SE	6TH	AVE	33435
126	SW	6TH	AVE	33435
128	SE	6TH	AVE	33435
129	SW	6TH	AVE	33435
132	SE	6TH	AVE	33435
133	NW	6TH	AVE	33435
133	SE	6TH	AVE	33435
133	SW	6TH	AVE	33435
136	SW	6TH	AVE	33435
137	SE	6TH	AVE	33435
139	SW	6TH	AVE	33435
140	SW	6TH	AVE	33435
143	SE	6TH	AVE	33435
204	SW	6TH	AVE	33435
211	SE	6TH	AVE	33435
212	SE	6TH	AVE	33435
212	SW	6TH	AVE	33435
220	SW	6TH	AVE	33435
224	SW	6TH	AVE	33435
225	NW	6TH	AVE	33435
228	SW	6TH	AVE	33435
233	NW	6TH	AVE	33435
240	SW	6TH	AVE	33435
301	SW	6TH	AVE	33435
304	SW	6TH	AVE	33435
403	SW	6TH	AVE	33435
409	SW	6TH	AVE	33435
410	SW	6TH	AVE	33435
415	NW	6TH	AVE	33435
415	SW	6TH	AVE	33435
421	SW	6TH	AVE	33435
430	SW	6TH	AVE	33435
812	SW	6TH	AVE	33426
902	SW	6TH	AVE	33426
903	SW	6TH	AVE	33426
906	SW	6TH	AVE	33426
907	SW	6TH	AVE	33426
1003	SW	6TH	AVE	33426
111	SW	7TH	AVE	33435
116	SW	7TH	AVE	33435
121	SW	7TH	AVE	33435
122	SW	7TH	AVE	33435
126	SW	7TH	AVE	33435
133	SW	7TH	AVE	33435

CITY OF BOYNTON BEACH MUNICIPAL FIREFIGHTERS'
PENSION TRUST FUND

Schedule of addresses on the State's point match system
Not in the City's master list of addresses

134	SW	7TH	AVE	33435
140	SW	7TH	AVE	33435
141	SW	7TH	AVE	33435
146	SW	7TH	AVE	33435
209	SW	7TH	AVE	33435
211	SE	7TH	AVE	33435
212	SW	7TH	AVE	33435
214	SE	7TH	AVE	33435
218	SW	7TH	AVE	33435
219	SW	7TH	AVE	33435
222	SW	7TH	AVE	33435
226	SW	7TH	AVE	33435
232	SW	7TH	AVE	33435
237	SW	7TH	AVE	33435
415	SW	7TH	CT	33435
416	SW	7TH	AVE	33435
416	SW	7TH	CT	33435
421	SW	7TH	AVE	33435
423	SW	7TH	AVE	33435
504	SW	7TH	ST	33426
907	NW	7TH	ST	33426
1001	NW	7TH	ST	33426
1202	NW	7TH	ST	33426
1231	NW	7TH	CT	33426
103	SW	8TH	PL	33426
104	SW	8TH	AVE	33435
104	SW	8TH	PL	33426
105	SW	8TH	PL	33426
109	SW	8TH	PL	33426
111	SW	8TH	PL	33426
118	SW	8TH	AVE	33435
122	SW	8TH	AVE	33435
130	SE	8TH	AVE	33435
130	SW	8TH	AVE	33435
134	SW	8TH	AVE	33435
140	SE	8TH	AVE	33435
141	SW	8TH	AVE	33435
145	SW	8TH	AVE	33435
146	SW	8TH	AVE	33435
210	SW	8TH	AVE	33435
215	SE	8TH	AVE	33435
215	SW	8TH	AVE	33435
221	SW	8TH	AVE	33435
315	SW	8TH	AVE	33435
409	SW	8TH	AVE	33435
415	SW	8TH	AVE	33435
426	SW	8TH	AVE	33435

CITY OF BOYNTON BEACH MUNICIPAL FIREFIGHTERS'
PENSION TRUST FUND

Schedule of addresses on the State's point match system
Not in the City's master list of addresses

428	NW	8TH	AVE	33435
429	SW	8TH	AVE	33435
509	NW	8TH	AVE	33435
807	SW	8TH	AVE	33426
808	SW	8TH	AVE	33426
823	NW	8TH	WAY	33426
111	SE	9TH	AVE	33435
112	SW	9TH	AVE	33435
117	SW	9TH	AVE	33435
118	SW	9TH	AVE	33435
123	NE	9TH	AVE	33435
129	NE	9TH	AVE	33435
133	SW	9TH	AVE	33435
134	SW	9TH	AVE	33435
139	SW	9TH	AVE	33435
141	SW	9TH	AVE	33435
145	SW	9TH	AVE	33435
146	SW	9TH	AVE	33435
210	SW	9TH	AVE	33435
211	SE	9TH	AVE	33435
213	SW	9TH	AVE	33435
225	SW	9TH	AVE	33435
231	SW	9TH	AVE	33435
345	SW	9TH	AVE	33435
402	SW	9TH	AVE	33435
415	SW	9TH	AVE	33435
420	NW	9TH	AVE	33435
424	SW	9TH	AVE	33435
120	S	ATLANTIC	DR	33435
304		BOYNTON BAY	CIR	33435
306		BOYNTON BAY	CIR	33435
307		BOYNTON BAY	CIR	33435
385		BOYNTON BAY	CIR	33435
405		BOYNTON BAY	CIR	33435
202	W	BOYNTON BEACH	BLVD	33435
301	W	BOYNTON BEACH	BLVD	33435
401	W	BOYNTON BEACH	BLVD	33435
402	W	BOYNTON BEACH	BLVD	33435
403	W	BOYNTON BEACH	BLVD	33435
407	W	BOYNTON BEACH	BLVD	33435
411	W	BOYNTON BEACH	BLVD	33435
416	W	BOYNTON BEACH	BLVD	33435
633	W	BOYNTON BEACH	BLVD	33426
700	W	BOYNTON BEACH	BLVD	33426
1531	W	BOYNTON BEACH	BLVD	33436
1540	W	BOYNTON BEACH	BLVD	33436
1550	W	BOYNTON BEACH	BLVD	33436

CITY OF BOYNTON BEACH MUNICIPAL FIREFIGHTERS'
PENSION TRUST FUND

Schedule of addresses on the State's point match system
Not in the City's master list of addresses

3553	W	BOYNTON BEACH	BLVD	33436
928		BROOKDALE	DR	33435
126		BUFFET KEY		33426
127		BUFFET KEY		33426
128		BUFFET KEY		33426
129		BUFFET KEY		33426
130		BUFFET KEY		33426
131		BUFFET KEY		33426
132		BUFFET KEY		33426
133		BUFFET KEY		33426
134		BUFFET KEY		33426
135		BUFFET KEY		33426
136		BUFFET KEY		33426
137		BUFFET KEY		33426
138		BUFFET KEY		33426
139		BUFFET KEY		33426
140		BUFFET KEY		33426
141		BUFFET KEY		33426
142		BUFFET KEY		33426
144		BUFFET KEY		33426
3668		BUTTONWOOD	LN	33436
8795		CASTLE	DR	33436
7015		CHESAPEAKE	CIR	33436
1	W	CHESTERFIELD	DR	33426
3	W	CHESTERFIELD	DR	33426
5	W	CHESTERFIELD	DR	33426
7	W	CHESTERFIELD	DR	33426
9	W	CHESTERFIELD	DR	33426
1601	S	CONGRESS	AVE	33426
1783	N	CONGRESS	AVE	33426
1901	S	CONGRESS	AVE	33426
2301	S	CONGRESS	AVE	33426
3000	S	CONGRESS	AVE	33426
3205	N	CONGRESS	AVE	33426
8532		CROWN	DR	33436
8534		CROWN	DR	33436
8608		DUCHESS	CT	33436
8620		DUCHESS	CT	33436
8631		DUCHESS	CT	33436
8649		DUCHESS	CT	33436
8655		DUCHESS	CT	33436
8665		DUCHESS	CT	33436
8654		DUKE	CT	33436
811		ESTANCIA	WAY	33435
101	S	FEDERAL	HWY	33435
400	S	FEDERAL	HWY	33435
411	S	FEDERAL	HWY	33435

CITY OF BOYNTON BEACH MUNICIPAL FIREFIGHTERS'
PENSION TRUST FUND

Schedule of addresses on the State's point match system
Not in the City's master list of addresses

515	S	FEDERAL	HWY	33435
606	N	FEDERAL	HWY	33435
608	N	FEDERAL	HWY	33435
717	S	FEDERAL	HWY	33435
719	S	FEDERAL	HWY	33435
725	S	FEDERAL	HWY	33435
727	S	FEDERAL	HWY	33435
915	S	FEDERAL	HWY	33435
1112	N	FEDERAL	HWY	33435
1120	S	FEDERAL	HWY	33435
1469	S	FEDERAL	HWY	33435
1509	S	FEDERAL	HWY	33435
1511	S	FEDERAL	HWY	33435
1541	S	FEDERAL	HWY	33435
1543	S	FEDERAL	HWY	33435
1600	S	FEDERAL	HWY	33435
1632	S	FEDERAL	HWY	33435
2010	S	FEDERAL	HWY	33435
2728	N	FEDERAL	HWY	33483
3000	N	FEDERAL	HWY	33483
3025	N	FEDERAL	HWY	33483
3047	N	FEDERAL	HWY	33483
3377	N	FEDERAL	HWY	33483
3420	N	FEDERAL	HWY	33483
3501	N	FEDERAL	HWY	33483
3506	N	FEDERAL	HWY	33483
3508	N	FEDERAL	HWY	33483
3625	N	FEDERAL	HWY	33483
2901		FOXBORO	CT	33436
455		FRANCESCA RIDGE	RD	33435
2715		FRESCA	WAY	33436
401		GASTON	CT	33436
551	E	GATEWAY	BLVD	33435
1		GLENS	DR	33436
3		GLENS	DR	33436
5		GLENS	DR	33436
7		GLENS	DR	33436
9		GLENS	DR	33436
15		GLENS	DR	33436
17		GLENS	DR	33436
21		GLENS	DR	33436
22		GLENS	DR	33436
24		GLENS	DR	33436
25		GLENS	DR	33436
28		GLENS	DR	33436
29		GLENS	DR	33436
30		GLENS	DR	33436

CITY OF BOYNTON BEACH MUNICIPAL FIREFIGHTERS'
PENSION TRUST FUND

Schedule of addresses on the State's point match system
Not in the City's master list of addresses

31		GLENS	DR	33436
33		GLENS	DR	33436
35		GLENS	DR	33436
36		GLENS	DR	33436
37		GLENS	DR	33436
38		GLENS	DR	33436
39		GLENS	DR	33436
1250		GONDOLA	CT	33426
405		GRAND	BLVD	33435
411		GRAND	BLVD	33435
416		GRAND	BLVD	33435
807		GRAND	BLVD	33435
809		GRAND	BLVD	33435
811		GRAND	BLVD	33435
130	N	HIGH POINT	BLVD	33435
135	N	HIGH POINT	BLVD	33435
140	N	HIGH POINT	BLVD	33435
145	N	HIGH POINT	BLVD	33435
150	N	HIGH POINT	BLVD	33435
155	N	HIGH POINT	BLVD	33435
160	N	HIGH POINT	BLVD	33435
165	N	HIGH POINT	BLVD	33435
170	N	HIGH POINT	BLVD	33435
175	N	HIGH POINT	BLVD	33435
180	N	HIGH POINT	BLVD	33435
185	N	HIGH POINT	BLVD	33435
190	N	HIGH POINT	BLVD	33435
195	N	HIGH POINT	BLVD	33435
200	N	HIGH POINT	BLVD	33435
205	N	HIGH POINT	BLVD	33435
240	N	HIGH POINT	BLVD	33435
245	N	HIGH POINT	BLVD	33435
250	N	HIGH POINT	BLVD	33435
255	N	HIGH POINT	BLVD	33435
260	N	HIGH POINT	BLVD	33435
265	N	HIGH POINT	BLVD	33435
270	N	HIGH POINT	BLVD	33435
275	N	HIGH POINT	BLVD	33435
280	N	HIGH POINT	BLVD	33435
285	N	HIGH POINT	BLVD	33435
290	N	HIGH POINT	BLVD	33435
1932		HIGH RIDGE	RD	33426
1968		HIGH RIDGE	RD	33426
1970		HIGH RIDGE	RD	33426
1972		HIGH RIDGE	RD	33426
2028		HIGH RIDGE	RD	33426
2310		HIGH RIDGE	RD	33426

CITY OF BOYNTON BEACH MUNICIPAL FIREFIGHTERS'
PENSION TRUST FUND

Schedule of addresses on the State's point match system
Not in the City's master list of addresses

613		HILLCREST	RD	33435
400	W	INDUSTRIAL	AVE	33426
450		INDUSTRIAL	WAY	33426
510	W	INDUSTRIAL	AVE	33426
8678		KNIGHT	RD	33436
4379		LADY BEVERLEE	CT	33436
4396		LADY BEVERLEE	CT	33436
4406		LADY BEVERLEE	CT	33436
2622	N	LAKE	DR	33435
103		LAKE DRIVE	EXT	33435
613		LAS PALMAS PARK		33435
925	NW	LE GRACE	CIR	33426
935	NW	LE GRACE	CIR	33426
945	NW	LE GRACE	CIR	33426
955	NW	LE GRACE	CIR	33426
965	NW	LE GRACE	CIR	33426
14210		MAHOGANY	DR	33436
610		MANATEE BAY	DR	33435
612		MANATEE BAY	DR	33435
613		MANATEE BAY	DR	33435
614		MANATEE BAY	DR	33435
615		MANATEE BAY	DR	33435
616		MANATEE BAY	DR	33435
617		MANATEE BAY	DR	33435
618		MANATEE BAY	DR	33435
620		MANATEE BAY	DR	33435
623		MANATEE BAY	DR	33435
624		MANATEE BAY	DR	33435
626		MANATEE BAY	DR	33435
627		MANATEE BAY	DR	33435
628		MANATEE BAY	DR	33435
629		MANATEE BAY	DR	33435
630		MANATEE BAY	DR	33435
632		MANATEE BAY	DR	33435
634		MANATEE BAY	DR	33435
635		MANATEE BAY	DR	33435
636		MANATEE BAY	DR	33435
638		MANATEE BAY	DR	33435
639		MANATEE BAY	DR	33435
640		MANATEE BAY	DR	33435
641		MANATEE BAY	DR	33435
642		MANATEE BAY	DR	33435
643		MANATEE BAY	DR	33435
644		MANATEE BAY	DR	33435
646		MANATEE BAY	DR	33435
648		MANATEE BAY	DR	33435
649		MANATEE BAY	DR	33435

CITY OF BOYNTON BEACH MUNICIPAL FIREFIGHTERS'
PENSION TRUST FUND

Schedule of addresses on the State's point match system
Not in the City's master list of addresses

650		MANATEE BAY	DR	33435
651		MANATEE BAY	DR	33435
652		MANATEE BAY	DR	33435
653		MANATEE BAY	DR	33435
654		MANATEE BAY	DR	33435
655		MANATEE BAY	DR	33435
656		MANATEE BAY	DR	33435
658		MANATEE BAY	DR	33435
659		MANATEE BAY	DR	33435
660		MANATEE BAY	DR	33435
661		MANATEE BAY	DR	33435
662		MANATEE BAY	DR	33435
663		MANATEE BAY	DR	33435
664		MANATEE BAY	DR	33435
668		MANATEE BAY	DR	33435
674		MANATEE BAY	DR	33435
675		MANATEE BAY	DR	33435
676		MANATEE BAY	DR	33435
677		MANATEE BAY	DR	33435
678		MANATEE BAY	DR	33435
679		MANATEE BAY	DR	33435
680		MANATEE BAY	DR	33435
681		MANATEE BAY	DR	33435
682		MANATEE BAY	DR	33435
684		MANATEE BAY	DR	33435
685		MANATEE BAY	DR	33435
686		MANATEE BAY	DR	33435
687		MANATEE BAY	DR	33435
689		MANATEE BAY	DR	33435
691		MANATEE BAY	DR	33435
692		MANATEE BAY	DR	33435
694		MANATEE BAY	DR	33435
696		MANATEE BAY	DR	33435
697		MANATEE BAY	DR	33435
699		MANATEE BAY	DR	33435
702		MANATEE BAY	DR	33435
703		MANATEE BAY	DR	33435
704		MANATEE BAY	DR	33435
706		MANATEE BAY	DR	33435
708		MANATEE BAY	DR	33435
709		MANATEE BAY	DR	33435
710		MANATEE BAY	DR	33435
711		MANATEE BAY	DR	33435
712		MANATEE BAY	DR	33435
713		MANATEE BAY	DR	33435
716		MANATEE BAY	DR	33435
718		MANATEE BAY	DR	33435

CITY OF BOYNTON BEACH MUNICIPAL FIREFIGHTERS'
PENSION TRUST FUND

Schedule of addresses on the State's point match system
Not in the City's master list of addresses

719		MANATEE BAY	DR	33435
720		MANATEE BAY	DR	33435
721		MANATEE BAY	DR	33435
722		MANATEE BAY	DR	33435
723		MANATEE BAY	DR	33435
724		MANATEE BAY	DR	33435
726		MANATEE BAY	DR	33435
728		MANATEE BAY	DR	33435
729		MANATEE BAY	DR	33435
730		MANATEE BAY	DR	33435
731		MANATEE BAY	DR	33435
732		MANATEE BAY	DR	33435
733		MANATEE BAY	DR	33435
734		MANATEE BAY	DR	33435
735		MANATEE BAY	DR	33435
737		MANATEE BAY	DR	33435
740		MANATEE BAY	DR	33435
741		MANATEE BAY	DR	33435
742		MANATEE BAY	DR	33435
743		MANATEE BAY	DR	33435
744		MANATEE BAY	DR	33435
746		MANATEE BAY	DR	33435
747		MANATEE BAY	DR	33435
748		MANATEE BAY	DR	33435
750		MANATEE BAY	DR	33435
752		MANATEE BAY	DR	33435
753		MANATEE BAY	DR	33435
754		MANATEE BAY	DR	33435
756		MANATEE BAY	DR	33435
757		MANATEE BAY	DR	33435
759		MANATEE BAY	DR	33435
760		MANATEE BAY	DR	33435
761		MANATEE BAY	DR	33435
762		MANATEE BAY	DR	33435
764		MANATEE BAY	DR	33435
765		MANATEE BAY	DR	33435
766		MANATEE BAY	DR	33435
768		MANATEE BAY	DR	33435
769		MANATEE BAY	DR	33435
770		MANATEE BAY	DR	33435
772		MANATEE BAY	DR	33435
773		MANATEE BAY	DR	33435
775		MANATEE BAY	DR	33435
776		MANATEE BAY	DR	33435
777		MANATEE BAY	DR	33435
778		MANATEE BAY	DR	33435
780		MANATEE BAY	DR	33435

CITY OF BOYNTON BEACH MUNICIPAL FIREFIGHTERS'
PENSION TRUST FUND

Schedule of addresses on the State's point match system
Not in the City's master list of addresses

781		MANATEE BAY	DR	33435
782		MANATEE BAY	DR	33435
783		MANATEE BAY	DR	33435
784		MANATEE BAY	DR	33435
785		MANATEE BAY	DR	33435
1632		MANATEE BAY	DR	33435
654		MANOR	DR	33435
111	E	MARTIN LUTHER KING JR	BLVD	33435
111	W	MARTIN LUTHER KING JR	BLVD	33435
117	E	MARTIN LUTHER KING JR	BLVD	33435
117	W	MARTIN LUTHER KING JR	BLVD	33435
118	E	MARTIN LUTHER KING JR	BLVD	33435
119	E	MARTIN LUTHER KING JR	BLVD	33435
119	W	MARTIN LUTHER KING JR	BLVD	33435
121	W	MARTIN LUTHER KING JR	BLVD	33435
123	W	MARTIN LUTHER KING JR	BLVD	33435
125	W	MARTIN LUTHER KING JR	BLVD	33435
130	E	MARTIN LUTHER KING JR	BLVD	33435
132	E	MARTIN LUTHER KING JR	BLVD	33435
133	W	MARTIN LUTHER KING JR	BLVD	33435
137	W	MARTIN LUTHER KING JR	BLVD	33435
141	W	MARTIN LUTHER KING JR	BLVD	33435
147	W	MARTIN LUTHER KING JR	BLVD	33435
153	W	MARTIN LUTHER KING JR	BLVD	33435
206	E	MARTIN LUTHER KING JR	BLVD	33435
208	E	MARTIN LUTHER KING JR	BLVD	33435
211	E	MARTIN LUTHER KING JR	BLVD	33435
214	E	MARTIN LUTHER KING JR	BLVD	33435
215	E	MARTIN LUTHER KING JR	BLVD	33435
215	W	MARTIN LUTHER KING JR	BLVD	33435
219	W	MARTIN LUTHER KING JR	BLVD	33435
220	E	MARTIN LUTHER KING JR	BLVD	33435
220	W	MARTIN LUTHER KING JR	BLVD	33435
221	E	MARTIN LUTHER KING JR	BLVD	33435
222	W	MARTIN LUTHER KING JR	BLVD	33435
224	E	MARTIN LUTHER KING JR	BLVD	33435
225	E	MARTIN LUTHER KING JR	BLVD	33435
225	W	MARTIN LUTHER KING JR	BLVD	33435
227	E	MARTIN LUTHER KING JR	BLVD	33435
228	E	MARTIN LUTHER KING JR	BLVD	33435
235	W	MARTIN LUTHER KING JR	BLVD	33435
301	W	MARTIN LUTHER KING JR	BLVD	33435
305	W	MARTIN LUTHER KING JR	BLVD	33435
307	E	MARTIN LUTHER KING JR	BLVD	33435
308	E	MARTIN LUTHER KING JR	BLVD	33435
309	W	MARTIN LUTHER KING JR	BLVD	33435
314	W	MARTIN LUTHER KING JR	BLVD	33435

CITY OF BOYNTON BEACH MUNICIPAL FIREFIGHTERS'
PENSION TRUST FUND

Schedule of addresses on the State's point match system
Not in the City's master list of addresses

315	E	MARTIN LUTHER KING JR	BLVD	33435
315	W	MARTIN LUTHER KING JR	BLVD	33435
317	E	MARTIN LUTHER KING JR	BLVD	33435
318	E	MARTIN LUTHER KING JR	BLVD	33435
321	E	MARTIN LUTHER KING JR	BLVD	33435
323	E	MARTIN LUTHER KING JR	BLVD	33435
324	E	MARTIN LUTHER KING JR	BLVD	33435
325	E	MARTIN LUTHER KING JR	BLVD	33435
336	E	MARTIN LUTHER KING JR	BLVD	33435
338	E	MARTIN LUTHER KING JR	BLVD	33435
339	E	MARTIN LUTHER KING JR	BLVD	33435
404	E	MARTIN LUTHER KING JR	BLVD	33435
408	E	MARTIN LUTHER KING JR	BLVD	33435
409	E	MARTIN LUTHER KING JR	BLVD	33435
411	W	MARTIN LUTHER KING JR	BLVD	33435
414	W	MARTIN LUTHER KING JR	BLVD	33435
416	E	MARTIN LUTHER KING JR	BLVD	33435
417	E	MARTIN LUTHER KING JR	BLVD	33435
417	W	MARTIN LUTHER KING JR	BLVD	33435
423	W	MARTIN LUTHER KING JR	BLVD	33435
425	E	MARTIN LUTHER KING JR	BLVD	33435
428	E	MARTIN LUTHER KING JR	BLVD	33435
429	W	MARTIN LUTHER KING JR	BLVD	33435
430	W	MARTIN LUTHER KING JR	BLVD	33435
516	W	MARTIN LUTHER KING JR	BLVD	33435
517	W	MARTIN LUTHER KING JR	BLVD	33435
518	W	MARTIN LUTHER KING JR	BLVD	33435
519	W	MARTIN LUTHER KING JR	BLVD	33435
520	W	MARTIN LUTHER KING JR	BLVD	33435
521	W	MARTIN LUTHER KING JR	BLVD	33435
522	W	MARTIN LUTHER KING JR	BLVD	33435
525	W	MARTIN LUTHER KING JR	BLVD	33435
526	W	MARTIN LUTHER KING JR	BLVD	33435
527	W	MARTIN LUTHER KING JR	BLVD	33435
530	W	MARTIN LUTHER KING JR	BLVD	33435
531	W	MARTIN LUTHER KING JR	BLVD	33435
533	W	MARTIN LUTHER KING JR	BLVD	33435
534	W	MARTIN LUTHER KING JR	BLVD	33435
538	W	MARTIN LUTHER KING JR	BLVD	33435
541	W	MARTIN LUTHER KING JR	BLVD	33435
544	W	MARTIN LUTHER KING JR	BLVD	33435
545	W	MARTIN LUTHER KING JR	BLVD	33435
548	W	MARTIN LUTHER KING JR	BLVD	33435
550	W	MARTIN LUTHER KING JR	BLVD	33435
551	W	MARTIN LUTHER KING JR	BLVD	33435
555	W	MARTIN LUTHER KING JR	BLVD	33435
556	W	MARTIN LUTHER KING JR	BLVD	33435

CITY OF BOYNTON BEACH MUNICIPAL FIREFIGHTERS'
PENSION TRUST FUND

Schedule of addresses on the State's point match system
Not in the City's master list of addresses

560	W	MARTIN LUTHER KING JR	BLVD	33435
108		MILLER	RD	33483
110		MILLER	RD	33483
115		MILLER	RD	33483
117		MILLER	RD	33483
1025		NEW LAKE	DR	33426
3674		NEWPORT	AVE	33436
110	E	OCEAN	AVE	33435
128	E	OCEAN	AVE	33435
129	W	OCEAN	AVE	33435
130	W	OCEAN	AVE	33435
140	W	OCEAN	AVE	33435
150	E	OCEAN	AVE	33435
211	W	OCEAN	AVE	33435
305	W	OCEAN	AVE	33435
404	W	OCEAN	AVE	33435
405	W	OCEAN	AVE	33435
511	W	OCEAN	AVE	33435
516	W	OCEAN	AVE	33426
517	E	OCEAN	AVE	33435
555	W	OCEAN	AVE	33426
566	W	OCEAN	AVE	33426
571	W	OCEAN	AVE	33426
603	W	OCEAN	AVE	33426
609	W	OCEAN	AVE	33426
613	W	OCEAN	AVE	33426
630	W	OCEAN	AVE	33426
636	W	OCEAN	AVE	33426
639	W	OCEAN	AVE	33426
720	W	OCEAN	AVE	33426
802	W	OCEAN	AVE	33426
819	W	OCEAN	AVE	33426
839	E	OCEAN	AVE	33435
3605		OLD DIXIE	HWY	33483
150	N	PALM	DR	33435
165	S	PALM	DR	33435
1499	NW	PARK RIDGE	BLVD	33426
1500	NW	PARK RIDGE	BLVD	33426
1580	NW	PARK RIDGE	BLVD	33426
3814		PERIWINKLE	LN	33483
1202		PINEHURST	DR	33426
1204		PINEHURST	DR	33426
1205		PINEHURST	DR	33426
1206		PINEHURST	DR	33426
1207		PINEHURST	DR	33426
1208		PINEHURST	DR	33426
1301		PINEHURST	DR	33426

CITY OF BOYNTON BEACH MUNICIPAL FIREFIGHTERS'
PENSION TRUST FUND

Schedule of addresses on the State's point match system
Not in the City's master list of addresses

1302		PINEHURST	DR	33426
1303		PINEHURST	DR	33426
1304		PINEHURST	DR	33426
1305		PINEHURST	DR	33426
1306		PINEHURST	DR	33426
2102		PINEHURST	DR	33426
2103		PINEHURST	DR	33426
2104		PINEHURST	DR	33426
2105		PINEHURST	DR	33426
2106		PINEHURST	DR	33426
2107		PINEHURST	DR	33426
2108		PINEHURST	DR	33426
2201		PINEHURST	DR	33426
2202		PINEHURST	DR	33426
2203		PINEHURST	DR	33426
2204		PINEHURST	DR	33426
2205		PINEHURST	DR	33426
2206		PINEHURST	DR	33426
2207		PINEHURST	DR	33426
2208		PINEHURST	DR	33426
2301		PINEHURST	DR	33426
2302		PINEHURST	DR	33426
2303		PINEHURST	DR	33426
2305		PINEHURST	DR	33426
2306		PINEHURST	DR	33426
2307		PINEHURST	DR	33426
2308		PINEHURST	DR	33426
3101		PINEHURST	DR	33426
3102		PINEHURST	DR	33426
3103		PINEHURST	DR	33426
3104		PINEHURST	DR	33426
3106		PINEHURST	DR	33426
3107		PINEHURST	DR	33426
3108		PINEHURST	DR	33426
3202		PINEHURST	DR	33426
3204		PINEHURST	DR	33426
3205		PINEHURST	DR	33426
3206		PINEHURST	DR	33426
3207		PINEHURST	DR	33426
3208		PINEHURST	DR	33426
3301		PINEHURST	DR	33426
3302		PINEHURST	DR	33426
3303		PINEHURST	DR	33426
3304		PINEHURST	DR	33426
3305		PINEHURST	DR	33426
3306		PINEHURST	DR	33426
3307		PINEHURST	DR	33426

CITY OF BOYNTON BEACH MUNICIPAL FIREFIGHTERS'
PENSION TRUST FUND

Schedule of addresses on the State's point match system
Not in the City's master list of addresses

3308		PINEHURST	DR	33426
4101		PINEHURST	DR	33426
4102		PINEHURST	DR	33426
4103		PINEHURST	DR	33426
4104		PINEHURST	DR	33426
4105		PINEHURST	DR	33426
4106		PINEHURST	DR	33426
4107		PINEHURST	DR	33426
4108		PINEHURST	DR	33426
4201		PINEHURST	DR	33426
4202		PINEHURST	DR	33426
4203		PINEHURST	DR	33426
4204		PINEHURST	DR	33426
4205		PINEHURST	DR	33426
4206		PINEHURST	DR	33426
4207		PINEHURST	DR	33426
4208		PINEHURST	DR	33426
4301		PINEHURST	DR	33426
4302		PINEHURST	DR	33426
4303		PINEHURST	DR	33426
4304		PINEHURST	DR	33426
4305		PINEHURST	DR	33426
4306		PINEHURST	DR	33426
4307		PINEHURST	DR	33426
4308		PINEHURST	DR	33426
5101		PINEHURST	DR	33426
5102		PINEHURST	DR	33426
5103		PINEHURST	DR	33426
5104		PINEHURST	DR	33426
5105		PINEHURST	DR	33426
5106		PINEHURST	DR	33426
5107		PINEHURST	DR	33426
5108		PINEHURST	DR	33426
5202		PINEHURST	DR	33426
5203		PINEHURST	DR	33426
5206		PINEHURST	DR	33426
5207		PINEHURST	DR	33426
5208		PINEHURST	DR	33426
5301		PINEHURST	DR	33426
5302		PINEHURST	DR	33426
5303		PINEHURST	DR	33426
5304		PINEHURST	DR	33426
5305		PINEHURST	DR	33426
5306		PINEHURST	DR	33426
5308		PINEHURST	DR	33426
6102		PINEHURST	DR	33426
6103		PINEHURST	DR	33426

CITY OF BOYNTON BEACH MUNICIPAL FIREFIGHTERS'
PENSION TRUST FUND

Schedule of addresses on the State's point match system
Not in the City's master list of addresses

6104		PINEHURST	DR	33426
6105		PINEHURST	DR	33426
6106		PINEHURST	DR	33426
6107		PINEHURST	DR	33426
6202		PINEHURST	DR	33426
6203		PINEHURST	DR	33426
6205		PINEHURST	DR	33426
6206		PINEHURST	DR	33426
6207		PINEHURST	DR	33426
6208		PINEHURST	DR	33426
6301		PINEHURST	DR	33426
6302		PINEHURST	DR	33426
6304		PINEHURST	DR	33426
6305		PINEHURST	DR	33426
6307		PINEHURST	DR	33426
7102		PINEHURST	DR	33426
7103		PINEHURST	DR	33426
7104		PINEHURST	DR	33426
7105		PINEHURST	DR	33426
7106		PINEHURST	DR	33426
7107		PINEHURST	DR	33426
7108		PINEHURST	DR	33426
7201		PINEHURST	DR	33426
7202		PINEHURST	DR	33426
7203		PINEHURST	DR	33426
7204		PINEHURST	DR	33426
7206		PINEHURST	DR	33426
7208		PINEHURST	DR	33426
7302		PINEHURST	DR	33426
7303		PINEHURST	DR	33426
7305		PINEHURST	DR	33426
7306		PINEHURST	DR	33426
7307		PINEHURST	DR	33426
7308		PINEHURST	DR	33426
8101		PINEHURST	DR	33426
8102		PINEHURST	DR	33426
8103		PINEHURST	DR	33426
8106		PINEHURST	DR	33426
8107		PINEHURST	DR	33426
8108		PINEHURST	DR	33426
8201		PINEHURST	DR	33426
8202		PINEHURST	DR	33426
8203		PINEHURST	DR	33426
8204		PINEHURST	DR	33426
8205		PINEHURST	DR	33426
8206		PINEHURST	DR	33426
8207		PINEHURST	DR	33426

CITY OF BOYNTON BEACH MUNICIPAL FIREFIGHTERS'
PENSION TRUST FUND

Schedule of addresses on the State's point match system
Not in the City's master list of addresses

8208		PINEHURST	DR	33426
8301		PINEHURST	DR	33426
8302		PINEHURST	DR	33426
8304		PINEHURST	DR	33426
8305		PINEHURST	DR	33426
8306		PINEHURST	DR	33426
8307		PINEHURST	DR	33426
9101		PINEHURST	DR	33426
9102		PINEHURST	DR	33426
9103		PINEHURST	DR	33426
9106		PINEHURST	DR	33426
9107		PINEHURST	DR	33426
9108		PINEHURST	DR	33426
9201		PINEHURST	DR	33426
9202		PINEHURST	DR	33426
9203		PINEHURST	DR	33426
9204		PINEHURST	DR	33426
9205		PINEHURST	DR	33426
9206		PINEHURST	DR	33426
9207		PINEHURST	DR	33426
9208		PINEHURST	DR	33426
9301		PINEHURST	DR	33426
9302		PINEHURST	DR	33426
9303		PINEHURST	DR	33426
9304		PINEHURST	DR	33426
9305		PINEHURST	DR	33426
9306		PINEHURST	DR	33426
9307		PINEHURST	DR	33426
9308		PINEHURST	DR	33426
8886		PRINCESS DONNA	CT	33436
8919		PRINCESS DONNA	CT	33436
8931		PRINCESS DONNA	CT	33436
8953		PRINCESS DONNA	CT	33436
7291		PROVIDENCE	RD	33436
3426		QUANTUM	BLVD	33426
3614		QUANTUM	BLVD	33426
523	E	RIDGE	CIR	33435
101		SAUSALITO	CIR	33436
416	S	SEACREST	BLVD	33435
607	S	SEACREST	BLVD	33435
1005	S	SEACREST	BLVD	33435
1611	S	SEACREST	BLVD	33435
1620	S	SEACREST	BLVD	33435
2031	S	SEACREST	BLVD	33435
2180	S	SEACREST	BLVD	33435
2320	S	SEACREST	BLVD	33435
2401	S	SEACREST	BLVD	33435

CITY OF BOYNTON BEACH MUNICIPAL FIREFIGHTERS'
PENSION TRUST FUND

Schedule of addresses on the State's point match system
Not in the City's master list of addresses

2501	S	SEACREST	BLVD	33435
2575	S	SEACREST	BLVD	33435
2861	S	SEACREST	BLVD	33435
3040	S	SEACREST	BLVD	33435
3300	S	SEACREST	BLVD	33435
8		SOUTHERN CROSS	LN	33436
4341		STAR RUBY	BLVD	33436
8005		TANGELO	DR	33436
8060		TANGELO		33436
601		WINDWARD	CIR	33435
603		WINDWARD	CIR	33435
605		WINDWARD	CIR	33435
607		WINDWARD	CIR	33435
609		WINDWARD	CIR	33435
611		WINDWARD	CIR	33435
612		WINDWARD	CIR	33435
613		WINDWARD	CIR	33435
614		WINDWARD	CIR	33435
615		WINDWARD	CIR	33435
616		WINDWARD	CIR	33435
617		WINDWARD	CIR	33435
618		WINDWARD	CIR	33435
619		WINDWARD	CIR	33435
620		WINDWARD	CIR	33435
621		WINDWARD	CIR	33435
622		WINDWARD	CIR	33435
623		WINDWARD	CIR	33435
624		WINDWARD	CIR	33435
626		WINDWARD	CIR	33435
628		WINDWARD	CIR	33435
630		WINDWARD	CIR	33435
632		WINDWARD	CIR	33435
634		WINDWARD	CIR	33435
636		WINDWARD	CIR	33435
137	W	WOOLBRIGHT	RD	33435
313	W	WOOLBRIGHT	RD	33435
353	E	WOOLBRIGHT	RD	33435
355	E	WOOLBRIGHT	RD	33435
383	E	WOOLBRIGHT	RD	33435
385	E	WOOLBRIGHT	RD	33435

CITY OF BOYNTON BEACH MUNICIPAL FIREFIGHTERS'
PENSION TRUST FUND

Recommendations

We recommend that the schedule of City addresses be reconciled to the State's point match system and corrections be made where needed.

It is the City's responsibility to record all addresses in the state point match system as only the City knows why an address was recorded or not recorded. The City is also the only one to know if an address should not be in the point match system.

The state does not have responsibility to determine if an address is "missing" or valid.

Suggestions to Improve Your Premium Tax Allocation

Place a request in publications that are routinely distributed to residents asking them to verify with their insurance company that their property and/or casualty policies indicate that the insured property is located within the city or fire control district limits, making sure they are not coded to a mailing address which may be a nearby city.

Notify all local insurance agents regarding your concerns and ask them to review their policies to make sure that any renewal or new policies correctly reflect the location of the insured property or where the insured vehicle is garaged.

Complete a sample of suspect properties and provide to our office for confirmation. Please provide name, address of insured property, company name and policy number and we will ask the insurance company to verify to what city/fire district they reported the premium.

As new areas are incorporated into the city or fire district limits, provide a notice to the residents asking them to contact their insurance companies so that all policies are corrected to reflect that the insured property is now within the city or fire district limits.

Request your local inspectors to obtain policy information when performing inspections. Forward this information to our fire office for confirmation.

State Excise Tax on Property Insurance
Premiums - Overview

**CITY OF BOYNTON BEACH MUNICIPAL FIREFIGHTERS’
PENSION TRUST FUND**

State Excise Tax on Property Insurance Premiums - Overview

Number of Chapters 175 and 185, F.S., Plans

There are approximately 350 participating Chapters 175 and 185, F.S., retirement Plans:

	Fire	Police	Total
Chapter Plans	6	4	10
Local Law Plans	165	168	333
Total	171	172	343

Premium Tax Money

The Premium Tax Money is state insurance premium taxes assessed against property and casualty insurance policies. These funds are available for distribution to eligible Chapters 175 and 185, F.S., Plans every summer to help fund the Plans.

For Chapter 175, F.S., Plans, the money is derived from a 1.85% property insurance tax, which is defined in 175.101.

For Chapter 185, F.S., Plans, the money is derived from a 0.85% casualty insurance tax, which is defined in 185.08.

Reference: Subsections 175.032(18) and 185.02(4) F.S.

Insurance companies pay premium taxes on all property and casualty insurance policies sold within the state.

Insurance companies receive a credit toward their statewide insurance for taxes collected in the participating city and districts.

When a municipality or independent fire control district participates in Chapters 175 and 185, F.S., its citizens are not paying an additional tax.

CITY OF BOYNTON BEACH MUNICIPAL FIREFIGHTERS'
PENSION TRUST FUND

Collection of Taxes

Taxes are reported for calendar year to the Department of Revenue (DOR). Insurance companies are required to report the amount of premiums sold covering property within the corporate or fire control district boundaries of any participating municipality or fire control district. This information and funds are provided by DOR to the MPF Office, which then distributes funds to eligible Plans around the middle of August.

How to check a Plan's covered area

<https://pointmatch.state.fl.us/>

Calculation of Distribution Amount
Chapter 175, F.S., Plans:
Limited Disbursement

Section 175.122, F.S., limits the Premium Tax Money distributed to firefighter Plans to no more than 6% of the fire department's calendar year payroll. Therefore, it is important to report an accurate amount for payroll that includes the whole fire department, excluding only payroll for members participating in the FRS.

If 6% of calendar year payroll is less than 50% of the net Premium Tax Money available for distribution to the city or district, then the distribution will be equal to 50% of the Premium Tax Money available for distribution.

If 6% of calendar year payroll is more than 100% of the Premium Tax Money available for distribution to the city or district, then the distribution will be equal to 100% of the Premium Tax Money available for distribution.

**CITY OF BOYNTON BEACH MUNICIPAL FIREFIGHTERS'
PENSION TRUST FUND**

**If a Plan does not receive the maximum amount,
where does the balance go?**

If a distribution is limited due to calendar year payroll, the remaining amount is sent back to the DOR to fund the Firefighters' Supplemental Compensation Trust Fund (FFSCTF) program. This is the educational incentive payment for firefighters.

The firefighters' supplemental premium tax distribution is an additional distribution to eligible Chapter 175, F.S., Plans from the DOR. A supplemental distribution occurs when the DOR determines there is an excess of money not needed to support the FFSCTF.

Sent around October 1st each year.

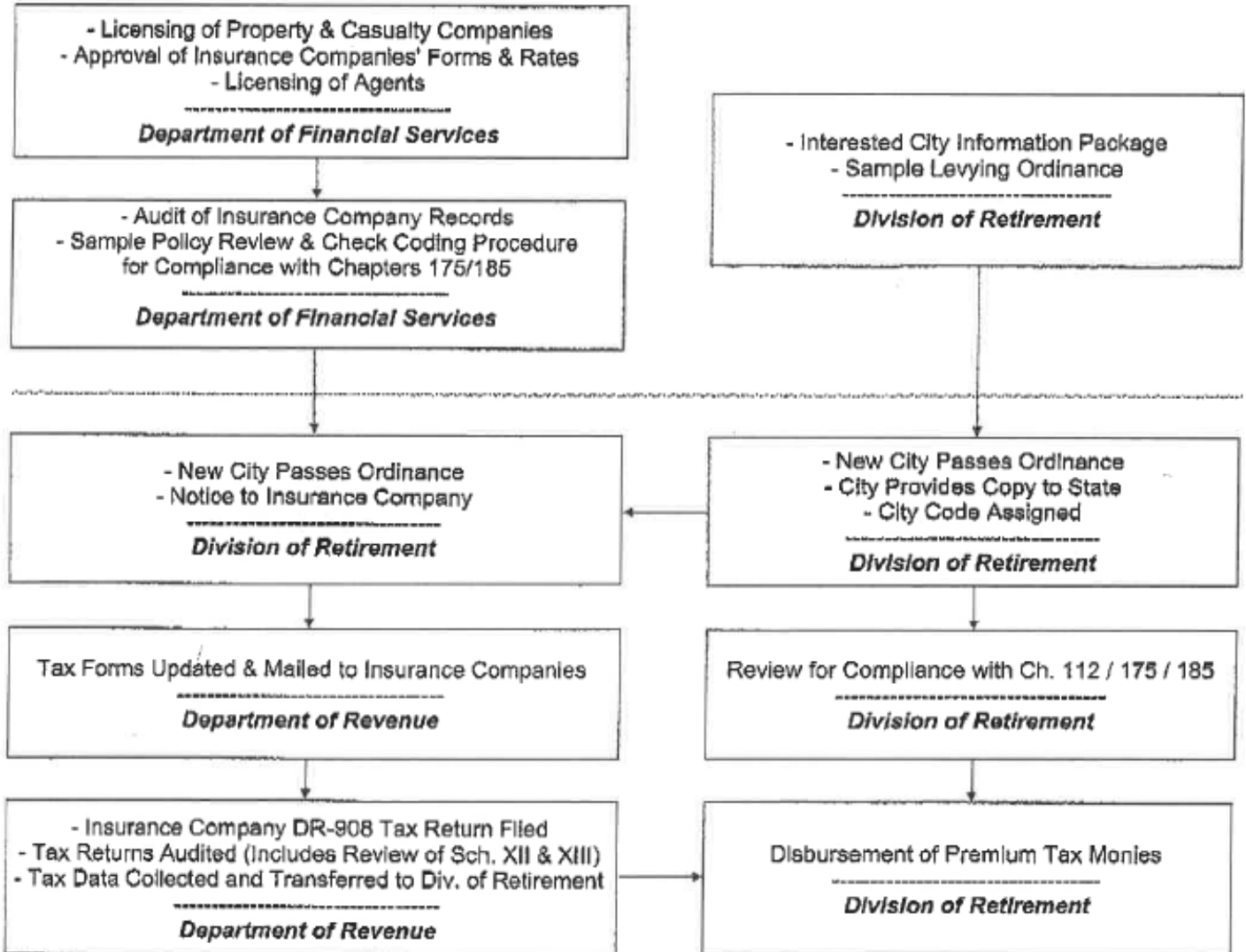
Reference Section 175.121(3), F.S.

**CITY OF BOYNTON BEACH MUNICIPAL FIREFIGHTERS'
PENSION TRUST FUND**

Procedures for Premium Tax Allocation

Insurance Companies

Cities



**CITY OF BOYNTON BEACH MUNICIPAL FIREFIGHTERS'
PENSION TRUST FUND**

**Division of Retirement
Contact Sheet**

David DiSalvo, Director
DIVISION OF RETIREMENT
POST OFFICE BOX 9000
TALLAHASSEE, FL 32315-9000
Toll Free (866) RET - ADMN (866 - 738 - 2366)
Local (850) 488-5540
Fax (850) 921-0371

Keith Brinkman, Chief
Bureau of Local Retirement Systems
DIVISION OF RETIREMENT
POST OFFICE BOX 9000
TALLAHASSEE, FL 32315-9000
E-mail Keith.Brinkman@dms.fl.gov
Toll Free (877) RET - LOCAL (877 - 738 - 5622)
Local (850) 488 - 2784

Doug Beckendorf, Actuary
Bureau of Local Retirement Systems
DIVISION OF RETIREMENT
POST OFFICE BOX 9000
TALLAHASSEE, FL 32315-9000
E-mail Douglas.Beckendorf@dms.fl.gov
Toll Free (877) RET - LOCAL (877 - 738 - 5622)
Local (850) 488 - 2784

Joe Edmonds, Actuary
Bureau of Local Retirement Systems
DIVISION OF RETIREMENT
POST OFFICE BOX 9000
TALLAHASSEE, FL 32315-9000
E-mail Joseph.Edmonds@dms.fl.gov
Toll Free (877) RET - LOCAL (877 - 738 - 5622)
Local (850) 488 - 2784

Stephen M. Bardin, Benefits Administrator
Municipal Police Officers' and Firefighters'
Retirement Trust Funds Office
DIVISION OF RETIREMENT
POST OFFICE BOX 3010
TALLAHASSEE, FL 32315-3010
E-mail mpf@dms.fl.gov
Website <http://www.myflorida.com/frs/mpf>
Toll Free (877) RET - MPFP (877 - 738 - 6737)
Local (850) 922 - 0667

Firefighters' Premium Tax
Distribution History

Firefighter's 2020 Premium Tax Distribution Calculation

City Code	City Name	Unadjusted Premium Tax	Reductions	Adj. Premium Tax	Payroll Change	FF Retiree Expense	Minimum Not Available to City	Payroll Distribution 2020 Calendar Year Payroll	6% of Calendar Year Payroll	Minimum 50% of Tax Available to City	Due From City	Distribution Amount	FF Suppl. Trust Fund
3	ST LUCAS COUNTY FIRE DIST.	\$2,841,533.50	\$0.00	\$2,841,533.50	\$227,322.80	\$1,206.21	\$2,614,210.69	\$73,204,270.00	\$4,397,696.20	\$1,306,442.84	\$0.00	\$2,812,805.63	\$0.00
14	WEST MINNATEE FCD	\$638,706.49	\$0.00	\$638,706.48	\$42,306.49	\$259.31	\$596,400.00	\$5,228,861.99	\$313,731.72	\$344,790.78	\$0.00	\$313,731.72	\$374,798.78
16	ASPENKA	\$400,644.80	\$0.00	\$400,644.80	\$32,051.58	\$166.85	\$368,588.99	\$7,409,532.11	\$444,571.53	\$384,202.04	\$0.00	\$384,202.04	\$0.00
19	ARCADIA	\$40,814.08	\$0.00	\$40,814.08	\$3,283.13	\$16.89	\$37,524.99	\$0.00	\$0.00	\$18,606.00	\$0.00	\$18,606.00	\$18,606.00
28	ATLANTIC BEACH	\$184,748.13	(\$184,748.13)	\$0.00	\$0.00	\$0.00	\$0.00	\$0.00	\$0.00	\$0.00	\$0.00	\$0.00	\$0.00
39	ATLANTIS	\$89,420.72	(\$89,420.72)	\$0.00	\$0.00	\$0.00	\$0.00	\$0.00	\$0.00	\$0.00	\$0.00	\$0.00	\$0.00
30	AUBURNDALE	\$123,803.58	\$0.00	\$123,803.58	\$9,304.28	\$57.74	\$114,492.54	\$1,967,099.55	\$118,025.57	\$36,920.77	\$0.00	\$113,641.54	\$0.00
34	AVON PARK	\$45,809.94	\$0.00	\$45,809.94	\$3,640.00	\$21.22	\$42,167.92	\$914,739.39	\$54,684.12	\$20,923.98	\$0.00	\$41,847.92	\$0.00
40	BALDWIN	\$8,046.49	(\$8,046.49)	\$0.00	\$0.00	\$0.00	\$0.00	\$0.00	\$0.00	\$0.00	\$0.00	\$0.00	\$0.00
48	BARTOW	\$140,768.23	\$0.00	\$140,768.23	\$11,362.80	\$69.00	\$129,405.47	\$1,597,259.45	\$119,837.01	\$84,728.84	\$0.00	\$119,837.01	\$6,520.68
47	BELLEAIR	\$89,802.09	(\$89,802.09)	\$0.00	\$0.00	\$0.00	\$0.00	\$0.00	\$0.00	\$0.00	\$0.00	\$0.00	\$0.00
71	BELLEAIR BLUFFS	\$29,882.30	(\$29,882.30)	\$0.00	\$0.00	\$0.00	\$0.00	\$0.00	\$0.00	\$0.00	\$0.00	\$0.00	\$0.00
103	BOCA RATON	\$2,427,848.35	\$0.00	\$2,427,848.34	\$184,227.88	\$1,132.28	\$2,242,620.39	\$49,122,488.00	\$2,707,347.90	\$1,116,244.20	\$0.00	\$2,332,400.39	\$0.00
181	BOYNTON BEACH	\$938,914.83	\$143,310.87	\$1,082,225.60	\$86,578.04	\$504.72	\$995,142.74	\$23,731,288.54	\$1,423,877.19	\$487,071.37	\$0.00	\$995,142.74	\$0.00
102	BRADENTON	\$490,128.09	\$0.00	\$490,128.09	\$39,210.25	\$228.58	\$450,917.28	\$8,082,519.17	\$487,733.16	\$225,944.83	\$0.00	\$487,733.16	\$0.00
106	BRYN MAABUR	\$3,608.48	(\$3,608.48)	\$0.00	\$0.00	\$0.00	\$0.00	\$0.00	\$0.00	\$0.00	\$0.00	\$0.00	\$0.00
303	BROOKSVILLE	\$85,291.89	\$0.00	\$85,291.88	\$5,218.13	\$30.41	\$80,073.42	\$1,881,037.32	\$99,095.26	\$29,977.58	\$0.00	\$80,095.12	\$0.00
222	CAPE CORAL	\$2,023,558.82	\$0.00	\$2,023,558.82	\$191,804.89	\$943.73	\$1,831,753.90	\$29,042,607.81	\$1,742,656.47	\$830,385.10	\$0.00	\$1,742,656.47	\$118,173.73
220	CASSELBERRY	\$177,871.82	\$0.00	\$177,871.82	\$14,228.75	\$82.95	\$163,643.07	\$3,471,696.79	\$209,296.39	\$61,778.81	\$0.00	\$163,643.07	\$0.00
238	CHATTahoochee	\$8,444.19	\$0.00	\$8,444.19	\$768.54	\$4.40	\$7,675.65	\$67,619.81	\$4,051.18	\$4,342.12	\$0.00	\$4,342.12	\$4,342.12
281	CLEARWATER	\$1,185,888.03	\$0.00	\$1,185,888.03	\$84,870.66	\$533.89	\$1,100,487.49	\$23,382,004.77	\$1,387,630.29	\$545,231.04	\$0.00	\$1,100,487.49	\$0.00
283	CLERMONT	\$281,832.14	\$0.00	\$281,832.14	\$22,830.87	\$131.35	\$258,999.99	\$9,227,669.89	\$563,713.89	\$129,436.11	\$0.00	\$258,979.22	\$0.00

Firefighter's 2019 Premium Tax Distribution Calculation

City Code	City Name	Unadjusted Premium Tax	Enclosure	AG Premium Tax	Service Charge	IFT Retention Expense	Minimum Not Available to City	Excess Limitations 2019 Calendar Year Payroll	% of Calendar Year Payroll	Minimum 50% of Not Available to City	Due From City	Distribution Amount	FF Suppl. Trust Fund
073	ST LUCIE COUNTY FIRE DIST.	\$2,455,126.89	\$0.00	\$2,455,126.89	\$197,210.16	\$1,255.30	\$2,258,661.44	\$89,860,302.00	\$4,173,616.12	\$1,133,330.72	\$0.00	\$2,208,661.44	\$0.00
094	WEST MANATEE FCD	\$477,500.25	\$0.00	\$477,500.25	\$36,300.02	\$243.17	\$439,957.06	\$5,007,875.36	\$300,460.52	\$219,528.55	\$0.00	\$300,460.52	\$136,598.54
116	APOPKA	\$399,363.77	\$0.00	\$399,363.77	\$26,748.10	\$183.01	\$372,432.66	\$6,877,810.88	\$412,688.05	\$165,215.83	\$0.00	\$330,431.65	\$0.00
119	ARCADIA	\$42,298.86	\$0.00	\$42,298.86	\$3,383.91	\$21.54	\$38,893.41	\$41,846.27	\$2,496.08	\$19,446.70	\$0.00	\$19,446.70	\$19,446.71
128	ATLANTIC BEACH	\$148,808.47	(\$148,808.47)	\$0.00	\$0.00	\$0.00	\$0.00	\$0.00	\$0.00	\$0.00	\$0.00	\$0.00	\$0.00
129	ATLANTIS	\$50,382.92	(\$50,382.92)	\$0.00	\$0.00	\$0.00	\$0.00	\$0.00	\$0.00	\$0.00	\$0.00	\$0.00	\$0.00
130	AUBURNDALE	\$117,015.82	\$0.00	\$117,015.82	\$9,281.24	\$59.58	\$107,684.00	\$1,901,118.65	\$114,087.12	\$53,727.34	\$0.00	\$107,594.89	\$0.00
134	AVON PARK	\$42,507.00	\$0.00	\$42,507.00	\$3,400.57	\$21.65	\$39,084.77	\$844,786.01	\$50,567.18	\$18,542.44	\$0.00	\$39,084.57	\$0.00
140	BALDWIN	\$7,290.66	(\$7,290.66)	\$0.00	\$0.00	\$0.00	\$0.00	\$0.00	\$0.00	\$0.00	\$0.00	\$0.00	\$0.00
148	BARTOW	\$134,326.09	\$0.00	\$134,326.09	\$10,748.89	\$68.41	\$123,514.79	\$1,903,640.16	\$114,218.41	\$61,790.40	\$0.00	\$114,218.41	\$9,302.58
167	BELLAIR	\$79,485.55	(\$79,485.55)	\$0.00	\$0.00	\$0.00	\$0.00	\$0.00	\$0.00	\$0.00	\$0.00	\$0.00	\$0.00
171	BELLAIR BLUFFS	\$31,685.04	(\$31,685.04)	\$0.00	\$0.00	\$0.00	\$0.00	\$0.00	\$0.00	\$0.00	\$0.00	\$0.00	\$0.00
183	BOCA RATON	\$2,110,577.48	\$0.00	\$2,110,577.48	\$166,846.20	\$1,074.93	\$1,942,656.35	\$42,180,798.00	\$2,251,447.88	\$979,328.22	\$0.00	\$1,940,656.45	\$0.00
191	BOYNTON BEACH	\$814,570.45	\$144,096.22	\$958,666.67	\$76,717.46	\$488.38	\$881,460.82	\$33,879,056.82	\$1,420,683.52	\$440,881.41	\$0.00	\$881,762.82	\$0.00
192	BRADENTON	\$484,118.88	\$0.00	\$484,118.88	\$38,729.35	\$246.54	\$445,140.99	\$8,203,489.80	\$492,209.34	\$222,570.50	\$0.00	\$445,140.99	\$0.00
198	BRINY BREEZES	\$1,606.88	(\$1,606.88)	\$0.00	\$0.00	\$0.00	\$0.00	\$0.00	\$0.00	\$0.00	\$0.00	\$0.00	\$0.00
203	BROOKSVILLE	\$72,595.94	\$0.00	\$72,595.94	\$5,807.68	\$36.97	\$66,751.29	\$1,547,896.56	\$98,873.80	\$33,375.94	\$0.00	\$66,751.29	\$0.00
222	CAPE CORAL	\$1,791,194.33	\$0.00	\$1,791,194.33	\$143,285.55	\$912.18	\$1,647,998.60	\$27,770,034.00	\$1,686,202.08	\$823,493.30	\$0.00	\$1,646,998.60	\$0.00
229	CASSELBERRY	\$164,184.85	\$0.00	\$164,184.85	\$13,133.17	\$83.80	\$150,947.88	\$3,430,188.78	\$205,810.13	\$75,473.94	\$0.00	\$150,947.88	\$0.00
238	CHATTAHOOCHEE	\$8,182.96	\$0.00	\$8,182.96	\$654.54	\$4.17	\$7,524.15	\$93,881.42	\$3,663.49	\$3,762.06	\$0.00	\$3,762.06	\$3,762.07
251	CLEARWATER	\$1,091,791.77	\$0.00	\$1,091,791.77	\$87,343.34	\$556.01	\$1,003,892.42	\$20,854,330.04	\$1,206,059.80	\$301,948.21	\$0.00	\$1,003,892.42	\$0.00
253	CLERMONT	\$241,017.27	\$0.00	\$241,017.27	\$19,281.39	\$122.74	\$221,513.15	\$8,782,818.06	\$527,589.06	\$110,806.88	\$0.00	\$221,513.15	\$0.00

Firefighter's 2018 Premium Tax Distribution Calculation

City Code	City Name	Unadjusted Premium Tax	Reallocate	Adj. Premium	Service Charge	IFT Database Expense	Maximum Net Available to City	Payroll Limitations 2018 Calendar Year Payroll	6% of Calendar Year Payroll	Minimum 50% of Net Available to City	Due From City	Distribution Amount	FF Suppl. Trust Fund
094	WEST MANATEE FCD	\$476,231.88	\$0.00	\$476,231.88	\$38,098.55	\$255.48	\$437,877.83	\$4,819,987.48	\$289,199.25	\$218,938.92	\$0.00	\$289,199.25	\$148,878.58
118	APOPKA	\$320,622.22	\$0.00	\$320,622.22	\$26,849.78	\$172.00	\$294,800.44	\$8,909,470.31	\$414,588.22	\$147,400.22	\$0.00	\$294,800.44	\$0.00
119	ARCADIA	\$44,959.93	\$0.00	\$44,959.93	\$3,598.79	\$24.12	\$41,339.02	\$122,911.05	\$7,374.66	\$20,689.51	\$0.00	\$20,689.51	\$20,689.51
128	ATLANTIC BEACH	\$140,364.11	(\$140,364.11)	\$0.00	\$0.00	\$0.00	\$0.00	\$0.00	\$0.00	\$0.00	\$0.00	\$0.00	\$0.00
129	ATLANTIS	\$51,894.38	(\$51,894.38)	\$0.00	\$0.00	\$0.00	\$0.00	\$0.00	\$0.00	\$0.00	\$0.00	\$0.00	\$0.00
130	AUBURNDALE	\$109,676.14	\$0.00	\$109,676.14	\$8,774.09	\$58.84	\$100,843.21	\$1,882,340.39	\$112,940.42	\$50,421.60	\$0.00	\$100,843.21	\$0.00
134	AVON PARK	\$41,405.99	\$0.00	\$41,405.99	\$3,312.48	\$22.21	\$38,071.30	\$869,872.49	\$52,192.35	\$19,035.65	\$0.00	\$38,071.30	\$0.00
140	BALDWIN	\$8,370.60	(\$8,370.60)	\$0.00	\$0.00	\$0.00	\$0.00	\$0.00	\$0.00	\$0.00	\$0.00	\$0.00	\$0.00
148	BARTOW	\$133,198.43	\$0.00	\$133,198.43	\$10,655.87	\$71.46	\$122,471.10	\$1,771,482.63	\$106,288.96	\$61,235.55	\$0.00	\$106,288.96	\$16,182.14
167	BELLEAIR	\$77,100.20	(\$77,100.20)	\$0.00	\$0.00	\$0.00	\$0.00	\$0.00	\$0.00	\$0.00	\$0.00	\$0.00	\$0.00
171	BELLEAIR BLUFFS	\$25,839.53	(\$25,839.53)	\$0.00	\$0.00	\$0.00	\$0.00	\$0.00	\$0.00	\$0.00	\$0.00	\$0.00	\$0.00
183	BOCA RATON	\$2,180,366.07	\$0.00	\$2,180,366.07	\$174,429.29	\$1,169.70	\$2,004,767.08	\$41,429,000.00	\$2,485,740.00	\$1,002,383.54	\$0.00	\$2,004,767.08	\$0.00
191	BOYNTON BEACH	\$758,597.45	\$145,088.31	\$903,683.76	\$72,294.70	\$484.80	\$830,904.26	\$23,801,505.05	\$1,416,090.30	\$415,452.13	\$0.00	\$830,904.26	\$0.00
192	BRADENTON	\$481,913.05	\$0.00	\$481,913.05	\$38,553.04	\$258.53	\$443,101.48	\$8,213,746.35	\$482,824.78	\$221,550.74	\$0.00	\$443,101.48	\$0.00
198	BRINY BREEZES	\$1,830.26	(\$1,830.26)	\$0.00	\$0.00	\$0.00	\$0.00	\$0.00	\$0.00	\$0.00	\$0.00	\$0.00	\$0.00
203	BROOKSVILLE	\$81,430.54	\$0.00	\$81,430.54	\$6,514.44	\$43.69	\$74,872.41	\$1,468,312.78	\$87,978.77	\$37,436.20	\$0.00	\$74,872.41	\$0.00
210	BUNNELL	\$18,475.94	\$0.00	\$18,475.94	\$1,478.08	\$9.81	\$16,987.95	\$8,198.43	\$491.79	\$8,493.98	\$0.00	\$8,493.98	\$8,493.97
222	CAPE CORAL	\$1,748,083.68	\$0.00	\$1,748,083.68	\$139,846.69	\$937.80	\$1,807,299.19	\$26,219,545.36	\$1,573,172.72	\$803,649.60	\$0.00	\$1,573,172.72	\$34,126.47
229	CASSELBERRY	\$152,910.63	\$0.00	\$152,910.63	\$12,232.85	\$82.03	\$140,595.75	\$2,751,861.79	\$165,111.71	\$70,297.88	\$0.00	\$140,595.75	\$0.00
238	CHATTAHOOCHEE	\$8,631.42	\$0.00	\$8,631.42	\$690.51	\$4.63	\$7,936.28	\$73,000.24	\$4,380.01	\$3,968.14	\$0.00	\$4,380.01	\$3,558.27
251	CLEARWATER	\$1,114,167.15	\$0.00	\$1,114,167.15	\$89,133.37	\$597.72	\$1,024,438.06	\$20,592,206.67	\$1,235,532.40	\$512,218.03	\$0.00	\$1,024,438.06	\$0.00
253	CLERMONT	\$227,612.90	\$0.00	\$227,612.90	\$18,209.03	\$122.11	\$209,281.76	\$5,385,390.00	\$323,123.40	\$104,640.88	\$0.00	\$209,281.76	\$0.00

Firefighters' Premium Tax Distribution History

2004 - 2017

	2017	2016	2015	2014	2013	2012	2011	2010	2009	2008	2007	2006	2005	2004
8 Anna Maria FCD	-	-	-	-	-	-	-	-	-	-	-	-	-	-
14 Big Corkscrew Island FCD	-	-	-	-	-	-	-	-	-	-	-	-	-	30,377.81
15 Boca Grande FCD	123,450.24	118,973.00	109,844.20	104,928.88	88,059.31	96,388.47	92,851.88	89,336.05	86,788.80	74,732.76	84,627.18	56,979.88	40,566.78	32,673.88
17 Bonita Springs FCD	554,780.22	550,061.59	547,161.77	585,583.85	583,891.88	552,532.44	598,492.15	548,627.88	525,786.56	553,702.52	564,813.49	494,688.47	463,124.69	336,789.56
18 Cedar Hammock FCD	-	-	-	-	-	-	-	-	-	-	-	-	-	-
21 Destin FCD	281,812.80	280,458.57	237,968.65	276,331.30	254,402.87	277,768.87	271,150.77	274,407.44	285,483.29	290,584.23	238,527.70	198,398.99	129,104.14	129,490.83
23 East Lake Tarpon FCD	311,741.75	303,444.84	306,518.83	281,082.73	262,147.83	245,744.33	264,990.76	237,148.29	228,822.10	238,782.14	154,493.80	148,789.54	146,846.12	113,785.84
24 Greater Naples FCD (was East Naples)	766,901.66	663,220.86	424,461.52	460,812.53	463,658.26	448,696.43	399,031.86	399,697.85	324,470.54	361,054.75	376,824.35	358,112.42	200,989.82	168,812.80
25 East Niceville FCD	29,418.88	33,194.96	36,489.39	39,016.85	39,784.30	34,939.95	31,327.17	30,506.31	27,512.28	26,083.16	24,000.04	11,830.14	-	-
27 Englewood FCD	368,397.89	372,826.21	360,785.14	337,817.73	320,589.17	349,963.63	348,662.89	299,234.97	291,004.87	239,827.15	268,826.97	253,391.36	178,579.66	158,844.04
29 Estero FCD	300,071.51	304,396.70	325,473.63	345,329.83	336,324.35	314,965.81	338,883.93	333,846.67	327,822.82	328,893.06	288,591.93	269,186.42	165,829.20	140,204.84
33 Holly-Navarre FCD	143,803.79	132,433.84	138,888.54	146,122.57	141,732.97	127,331.91	122,539.97	103,769.38	101,875.38	75,371.32	24,845.22	13,103.50	-	-
38 Indian Rocks FCD	-	-	-	-	-	-	-	-	-	-	-	-	-	-
40 Iona McGregor FCD	-	-	-	-	-	-	-	-	-	-	-	-	-	-
43 Midway FCD	118,845.44	110,388.66	111,879.33	122,277.83	120,182.88	108,034.85	97,614.40	83,003.79	85,700.89	87,267.37	95,428.58	88,539.01	52,985.61	42,382.47
47 North Bay FCD	66,343.88	66,527.75	73,789.47	71,529.79	78,818.70	78,175.15	62,513.71	81,546.42	61,006.84	57,584.45	63,785.35	48,324.73	36,814.94	33,395.11
48 North Ft. Myers FCD	-	-	-	-	-	-	-	-	-	-	-	-	-	-
60 North Collier FCD (was North Naples)	1,730,956.58	1,343,321.58	1,308,561.62	1,284,426.61	886,713.39	852,751.08	786,822.97	770,860.87	683,714.04	678,522.88	832,438.63	750,913.98	458,426.35	385,857.30
53 North River FCD	348,849.29	323,527.89	332,432.94	308,197.71	338,786.82	289,673.52	276,111.26	262,261.48	234,881.98	197,722.74	173,675.40	148,802.32	130,181.04	121,316.68
55 Ocean City - Wright FCD	238,418.50	258,039.23	242,213.75	217,755.05	289,360.54	288,713.14	208,862.08	156,960.24	156,690.24	167,878.07	140,683.10	117,833.26	81,748.84	23,348.92
57 Okaloosa Island FCD	37,865.44	36,659.56	45,330.27	43,485.54	56,846.21	54,472.00	51,623.14	52,025.28	53,131.49	26,273.65	50,386.76	43,088.82	28,270.91	19,156.56
60 Palm Harbor FCD	255,859.49	243,819.70	304,165.89	283,673.29	251,824.98	279,479.17	285,681.51	274,334.86	296,240.06	262,186.40	198,525.82	250,788.42	167,857.91	139,005.02
63 Pinellas Suncoast FCD	-	-	-	-	-	-	-	-	-	-	-	-	-	-
64 San Carlos Park FCD	188,280.45	168,262.15	169,259.71	159,045.63	168,487.04	157,107.14	155,194.16	157,855.44	130,884.51	143,295.54	117,674.77	92,742.40	68,846.85	56,860.34
66 South Trail FCD	-	-	-	-	-	-	-	-	-	-	-	-	-	-
67 South Walton FCD	681,518.08	649,494.52	679,600.29	674,896.79	625,456.63	568,471.67	592,285.85	586,489.25	589,579.38	341,386.46	470,374.55	384,181.48	244,866.45	217,155.22
69 South Manatee FCD	407,121.21	388,178.65	368,501.87	348,589.78	335,741.77	304,728.59	333,648.50	324,068.74	324,866.65	329,717.48	297,888.75	273,424.79	238,425.01	196,521.33
73 St. Lucie County FCD	2,151,983.35	1,980,170.85	2,019,112.62	2,068,889.27	2,204,449.81	2,029,658.53	2,053,698.59	1,912,210.85	1,850,781.37	1,832,719.15	1,593,825.01	1,429,928.65	1,212,437.54	981,421.71
94 West Manatee FCD	257,359.54	230,302.83	224,202.74	253,728.85	273,805.88	223,787.49	226,745.06	284,835.54	189,914.10	180,280.02	182,659.09	164,276.81	115,813.88	82,038.28
96 Westside FCD	-	-	-	-	-	-	-	-	-	-	-	-	-	-
106 Altamonte Springs	-	-	-	-	-	-	-	-	-	-	-	-	-	-
118 Apopka	284,001.29	266,043.77	261,504.73	267,280.88	280,686.67	288,750.28	263,778.09	254,910.51	221,518.83	237,696.78	256,091.05	241,620.18	202,017.84	173,937.33
119 Arcofia	28,972.61	22,878.23	23,024.66	24,385.43	27,272.58	28,088.78	25,451.64	27,717.21	26,743.49	32,702.43	29,978.86	32,551.28	36,413.40	40,787.81
126 Atlantic Beach	-	-	-	-	-	-	-	-	-	-	-	-	-	77,952.87
129 Atlantis	-	-	-	-	-	-	-	-	-	-	-	-	-	-
130 Auburndale	106,506.43	98,081.47	116,217.21	91,294.88	85,148.15	83,638.88	89,182.82	79,662.84	74,222.43	69,885.19	67,762.78	58,519.65	51,882.70	49,734.53
134 Avon Park	39,835.28	49,927.19	43,067.46	41,576.98	46,381.17	43,682.19	41,486.81	39,686.57	41,469.47	42,634.27	50,866.88	52,310.20	44,633.23	42,811.92
140 Baldwin	-	-	-	-	-	-	-	-	-	-	-	-	-	-
143 Bartow	106,778.84	96,424.14	86,412.88	89,884.92	88,911.86	84,948.75	83,075.84	79,825.97	84,543.29	94,882.88	100,163.44	63,263.84	65,098.30	60,480.55
151 Bay Harbour Island	-	-	-	-	-	-	-	-	-	-	-	-	-	-
165 Belle Glade	-	-	-	-	-	-	-	-	-	-	-	38,738.83	55,601.88	47,451.96
167 Belleair	-	-	-	-	-	-	-	-	-	-	-	-	-	-
177 Belleair Bluffs	-	-	-	-	-	-	-	-	48,081.33	46,642.07	46,828.91	42,272.86	17,982.44	23,030.74
179 Blountstown	-	-	-	-	-	-	-	-	-	-	-	-	-	-
183 Boca Raton	1,899,883.79	1,421,856.79	2,207,523.89	1,288,758.85	1,218,811.25	1,187,228.27	1,186,885.77	1,160,286.06	1,197,896.77	1,085,499.20	1,201,888.54	1,231,418.51	987,227.71	844,892.15
191 Dayton Beach	788,121.01	883,314.29	823,246.51	963,572.98	1,016,569.88	897,638.15	1,004,142.88	944,500.06	978,464.54	938,274.48	982,811.22	816,341.38	683,087.81	642,211.56
192 Bradenton	389,884.85	494,811.39	452,530.08	447,827.41	434,329.61	482,400.82	442,138.18	417,927.88	404,812.87	321,315.88	289,124.57	267,842.04	286,099.13	286,662.29
198 Briarcliff	-	-	-	-	-	-	-	-	-	-	-	-	-	-
203 Brooksville	77,142.38	86,752.45	71,679.90	76,947.39	72,423.44	76,062.09	52,910.31	74,233.63	75,823.60	73,488.75	80,062.85	88,870.04	66,077.98	58,380.46
210 Bunnell	8,854.98	10,275.29	8,706.80	7,924.88	8,153.28	7,327.58	6,597.58	6,680.94	8,613.42	9,464.47	9,828.33	12,973.76	12,147.58	10,134.49
215 Callaway	-	-	-	-	-	-	-	-	-	-	-	-	-	-
222 Cape Coral	1,452,470.32	1,406,928.98	1,327,842.75	1,241,146.80	1,474,247.82	1,477,712.37	1,411,568.68	1,416,186.27	1,321,790.40	1,388,301.89	1,307,987.11	786,165.33	671,917.00	593,521.33
228 Casselberry	137,173.09	134,191.80	147,535.84	132,310.27	146,468.50	142,491.28	133,438.32	129,380.86	135,826.46	135,880.74	141,882.23	109,298.57	73,779.30	78,038.88
238 Clearwater	3,888.45	3,584.90	4,375.73	4,426.00	4,829.62	4,162.33	4,832.31	4,381.48	4,889.27	7,528.86	4,884.84	4,688.40	5,196.60	4,193.20
251 Clearwater	1,038,343.67	1,087,574.82	1,132,679.31	1,158,829.52	1,144,985.04	1,093,263.13	1,067,493.00	1,062,094.62	5,030,981.91	1,093,518.82	1,012,246.94	763,491.88	724,066.30	688,125.29
253 Clermont	188,372.79	178,289.28	215,475.51	181,282.27	169,838.90	183,327.18	178,810.62	187,013.10	165,177.69	155,348.27	133,873.23	93,915.27	80,498.38	72,111.28
257 Coon	109,865.33	138,749.37	115,232.79	128,298.11	129,468.40	135,255.43	136,225.65	138,443.78	128,323.21	131,424.88	120,246.58	105,873.70	108,878.94	122,186.63
258 Cocoa Beach	186,665.47	186,827.29	181,380.87	185,849.82	115,167.66	182,688.40	83,157.00	98,283.58	98,068.78	104,234.06	95,734.06	90,224.87	79,767.00	78,589.90
268 Coconut Creek	-	-	-	-	-	-	-	-	-	-	-	-	-	-
265 Cooper City	181,143.92	185,711.25	190,628.62	177,661.84	185,781.53	188,788.52	188,898.59	155,292.55	145,683.83	160,791.04	165,369.17	165,284.33	171,782.24	129,898.88
268 Coral Gables	853,987.35	599,758.10	647,118.89	817,082.31	873,312.24	894,118.22	882,522.80	882,967.26	788,265.01	862,803.84	848,577.57	788,494.71	795,210.82	771,600.85
270 Coral Springs	1,480,404.72	1,438,714.41	1,397,880.79	1,351,994.10	1,271,532.77	1,234,401.21	1,088,249.81	1,080,975.25	1,084,023.94	1,024,166.86	743,118.48	689,854.57	572,471.38	398,882.26
278 Crescent City	7,806.00	7,884.28	15,913.00	6,137.00	6,448.34	6,423.38	5,498.83	4,881.98	6,298.83	5,362.80	6,098.08	5,535.52	11,204.08	4,897.94
279 Crosscut	143,912.84	144,024.57	149,887.42	138,388.44	149,148.12	148,492.12	124,463.48	138,877.63	138,214.34	120,061.84	113,134.21	75,446.20	64,840.68	61,747.29
287 Dade City	37,118.65	37,324.45	34,026.71	32,228.69	32,654.62	32,271.44	32,284.17	36,812.63	41,894.26	63,016.14	81,067.38	88,188.48	83,348.73	63,008.26
288 Dania Beach	141,123.10	201,282.12	189,071.43	182,792.87	192,988.44	241,481.90	262,334.73	236,707.31	236,707.31	212,553.86	212,553.86	171,397.60	151,688.41	151,688.41
290 Daversport	-	-	-	-	-	-	-	-	-	-	-	-	-	-
292 Davie	672,447.80	606,398.39	919,988.52	947,306.53	940,382.04									

Firefighters' 2020 Premium Tax
Distribution Calculation

Firefighter's 2020 Premium Tax Distribution Calculation

City Code	City Name	Unadjusted Premium Tax	Reallocate	Adj. Premium Tax	Service Charge	IPT Database Expense	Maximum Net Available to City	Payroll Limitations 2020 Calendar Year Payroll	6% of Calendar Year Payroll	Minimum 50% of Net Available to City	Due From City	Distribution Amount	FF Suppl. Trust Fund
		A	B	C = A + B	D = C + B	E	F = C - D - E	G	H * G * 6%	I = F * 50%	J	K = 0.50 * (C - I)	L = F - K
073	ST LUCIE COUNTY FIRE DIST.	\$2,841,533.59	\$0.00	\$2,841,533.59	\$227,322.69	\$1,325.21	\$2,612,885.69	\$73,294,270.00	\$4,397,656.20	\$1,306,442.84	\$0.00	\$2,612,885.69	\$0.00
094	WEST MANATEE FCD	\$536,708.49	\$0.00	\$536,708.49	\$42,936.68	\$250.31	\$493,521.50	\$5,228,861.99	\$313,731.72	\$246,760.75	\$0.00	\$313,731.72	\$179,769.78
118	APOPKA	\$400,844.50	\$0.00	\$400,844.50	\$32,051.56	\$186.85	\$368,406.09	\$7,409,532.11	\$444,571.93	\$184,203.04	\$0.00	\$368,406.09	\$0.00
119	ARCADIA	\$40,664.08	\$0.00	\$40,664.08	\$3,253.13	\$18.96	\$37,391.99	\$0.00	\$0.00	\$18,696.00	\$0.00	\$18,696.00	\$18,696.99
128	ATLANTIC BEACH	\$164,746.13	(\$164,746.13)	\$0.00	\$0.00	\$0.00	\$0.00	\$0.00	\$0.00	\$0.00	\$0.00	\$0.00	\$0.00
129	ATLANTIS	\$56,420.72	(\$56,420.72)	\$0.00	\$0.00	\$0.00	\$0.00	\$0.00	\$0.00	\$0.00	\$0.00	\$0.00	\$0.00
130	AUBURNDALE	\$123,803.56	\$0.00	\$123,803.56	\$9,904.28	\$57.74	\$113,841.54	\$1,967,059.55	\$118,023.57	\$56,920.77	\$0.00	\$113,841.54	\$0.00
134	AVON PARK	\$45,509.94	\$0.00	\$45,509.94	\$3,640.80	\$21.22	\$41,847.92	\$914,735.39	\$54,884.12	\$20,923.96	\$0.00	\$41,847.92	\$0.00
140	BALDWIN	\$8,048.49	(\$8,048.49)	\$0.00	\$0.00	\$0.00	\$0.00	\$0.00	\$0.00	\$0.00	\$0.00	\$0.00	\$0.00
148	BARTOW	\$140,786.23	\$0.00	\$140,786.23	\$11,262.90	\$65.66	\$129,457.67	\$1,997,283.45	\$119,837.01	\$64,728.84	\$0.00	\$119,837.01	\$9,620.66
167	BELLEAIR	\$69,802.03	(\$69,802.03)	\$0.00	\$0.00	\$0.00	\$0.00	\$0.00	\$0.00	\$0.00	\$0.00	\$0.00	\$0.00
171	BELLEAIR BLUFFS	\$29,962.39	(\$29,962.39)	\$0.00	\$0.00	\$0.00	\$0.00	\$0.00	\$0.00	\$0.00	\$0.00	\$0.00	\$0.00
183	BOCA RATON	\$2,427,848.55	\$0.00	\$2,427,848.55	\$194,227.88	\$1,132.28	\$2,232,488.39	\$45,122,466.00	\$2,707,347.96	\$1,116,244.20	\$0.00	\$2,232,488.39	\$0.00
191	BOYNTON BEACH	\$938,914.63	\$143,310.87	\$1,082,225.50	\$86,578.04	\$504.72	\$995,142.74	\$23,731,286.54	\$1,423,877.19	\$497,571.37	\$0.00	\$995,142.74	\$0.00
192	BRADENTON	\$490,128.09	\$0.00	\$490,128.09	\$39,210.25	\$228.58	\$450,689.26	\$6,962,219.17	\$537,733.15	\$225,344.83	\$0.00	\$450,689.26	\$0.00
198	BRINY BREEZES	\$3,668.48	(\$3,668.48)	\$0.00	\$0.00	\$0.00	\$0.00	\$0.00	\$0.00	\$0.00	\$0.00	\$0.00	\$0.00
203	BROOKSVILLE	\$65,201.86	\$0.00	\$65,201.86	\$5,216.13	\$30.41	\$59,955.12	\$1,661,087.92	\$99,665.28	\$29,977.56	\$0.00	\$59,955.12	\$0.00
222	CAPE CORAL	\$2,023,558.82	\$0.00	\$2,023,558.82	\$161,884.89	\$943.73	\$1,860,730.20	\$29,042,607.81	\$1,742,556.47	\$930,365.10	\$0.00	\$1,742,556.47	\$118,173.73
229	CASSELBERRY	\$177,871.92	\$0.00	\$177,871.92	\$14,229.75	\$82.95	\$163,559.22	\$3,471,069.76	\$206,265.39	\$81,779.61	\$0.00	\$163,559.22	\$0.00
238	CHATTAHOOCHEE	\$9,444.19	\$0.00	\$9,444.19	\$755.54	\$4.40	\$8,684.25	\$67,519.61	\$4,051.18	\$4,342.12	\$0.00	\$4,342.12	\$4,342.13
251	CLEARWATER	\$1,165,886.03	\$0.00	\$1,165,886.03	\$94,870.88	\$553.06	\$1,090,462.09	\$23,292,004.77	\$1,397,520.29	\$545,231.04	\$0.00	\$1,090,462.09	\$0.00
253	CLERMONT	\$261,632.14	\$0.00	\$261,632.14	\$22,530.57	\$131.35	\$258,970.22	\$9,228,559.85	\$553,713.59	\$129,485.11	\$0.00	\$258,970.22	\$0.00

Chapter 175, Florida Statutes
Firefighters' Insurance Premium Tax Distribution Explained

Column A - Undjusted Premum Tax (Section 175.101)

Gross premium tax receipts of 1.85 percent collected on property insurance policies written within each participating chapter 175 jurisdiction for the calendar year.

Column B - Reallocated (Section 175.04(3) & 175.101)

When a participating jurisdiction provides fire protection services to another incorporated municipality under an inter-local agreement, the municipality receiving the fire protection services may levy the insurance premium tax and designate that the municipality providing the fire protection services receive the distribution to help fund its chapter 175 pension fund. This column transfers premium taxes between taxing jurisdictions according to those instructions. The sum of this column will always be \$0 because the amounts transferred in will always equal the amounts transferred out.

Column C - Adj. Premium

Sum of columns A and B.

Column D - Service Charge (Section 215.10(1))

This 8 percent service charge, representing the estimated pro rata share of the cost of general government paid from the General Revenue Fund, is levied against all income of a revenue nature deposited in all trust funds, except for certain enumerated ones. The Police and Firefighters' Premium Tax Trust Fund does not qualify for an exemption to this charge. This amount is equal to 8 percent of the adjusted gross premium amounts collected within each jurisdiction and is transferred to the Comptroller's office to be returned to the General Revenue Fund prior to the distribution of premium taxes to participating jurisdictions.

TRANSFER OUT

Column E - IPT Database Expense (Section 175.1015(4))

For its role in creating and maintaining the insurance Premium Tax database, the Department of Revenue receives an annual amount sufficient to pay its expenses, up to \$50,000, from the chapter 175 premium tax receipts. This amount is equal to each jurisdiction's pro rata share of the \$50,000 charge levied by the Department of Revenue. The sum of this column will always total \$50,000, unless the Department of Revenue increases the levy pursuant to the allowable escalator clause contained in this section. **TRANSFER OUT**

Column F - Maximum Net Available to City

After the reallocation of premium taxes for inter-local agreements, and subtractions for each jurisdiction's share of the Service Charge and IPT Database Expense, this is the maximum amount available for distribution to the jurisdiction.

CHAPTER 175, FLORIDA STATUTES
FIREFIGHTERS' INSURANCE PREMIUM TAX DISTRIBUTION
CALCULATION EXPLAINED

Column G - Payroll Limitation Calendar Year Payroll (Section 175.122)

Each participating chapter 175 jurisdiction is required to provide an annual report to the Division of Retirement reporting the total calendar year payroll for the fire department, excluding any participants in the Florida Retirement System.

Column H - Payroll Limitation: 6% of Calendar Year Payroll (Section 175.122)

The premium tax distributions under chapter 175 are subject to a limitation based on 6 percent of the jurisdiction's calendar year fire department payroll reported to the Division of Retirement.

Column I - Minimum 50% Net Available to City (Section 175.122)

Notwithstanding the limitation related to the jurisdiction's calendar year fire department payroll, the jurisdiction will still always receive at least half of the premium taxes available for distribution. This is the minimum distribution available for each jurisdiction.

Column J - Due From City

The most common cause of a Due From City is an overstatement of payroll in a prior year's report, which lead to an over distribution of premium taxes in the prior year. When a jurisdiction notifies the Division of Retirement of an error, the amount of over distribution is withheld from the subsequent years' distribution. A Due From City may also result from an amended tax filing by an insurance company reporting an overstatement of premium taxes collected within the jurisdiction in a prior year. These are very infrequent.

Column K - Distribution Amount (Section 2175.122)

The actual amount to be distributed is the available taxes in column F, subject to a limitation tied to the jurisdiction's calendar year payroll. The distribution amount may not exceed 6 percent of the payroll, unless that amount is less than one-half of the maximum available for distribution. Therefore, the distribution amount will be the *middle value* of either: the maximum (column F), 6 percent of payroll (column H), or the minimum (50 percent of the maximum (column I)). After the middle value of the three options is determined, any Due From City amount must be subtracted to determine the amount to be distributed. **WARRANTS TO JURISDICTIONS**

Column L - FF Suppl. Trust (Section 175.121(3)(a))

Any premium taxes not distributed to a jurisdiction as a result of the payroll limitation are transferred to the Department of Revenue Firefighters' Supplemental Compensation Trust Fund. This program supports the supplemental compensation stipends available to firefighters who attain higher educational opportunities that directly relate to the improvement of the health and safety of the firefighters and the citizens they protect. This amount is equal to the maximum available for the jurisdiction (column F), less the amount actually distributed (column K). The sum of this column is due to the Department of Revenue Firefighters' Supplemental Compensation Program Trust Fund at the time all the other distributions are made.

TRANSFER OUT

Florida Department of Revenue
Insurance Premium Taxes and Fees Return,
Form DR-908



Name _____ FEIN _____ Taxable Year _____

SCHEDULE I **COMPUTATION OF INSURANCE PREMIUM TAX**
(Not To Be Used for Wet Marine and Transportation Tax)
*** Include the Florida Business Page of Your Florida Annual Statement ***

	Types of Insurance	Total Premiums	Tax Rate	Tax Due
1.	Property/Casualty/Miscellaneous			
	a. Plus: Additional Taxable Premiums			
	b. Less: Excluded Premiums			
	c. Total Taxable Premiums		1.75%	
2.	Life			
	a. Plus: Additional Taxable Premiums			
	b. Less: Excluded Premiums			
	c. Total Taxable Premiums		1.75%	
3.	Accident and Health			
	a. Plus: Additional Taxable Premiums			
	b. Less: Excluded Premiums			
	c. Total Taxable Premiums		1.75%	
4.	Prepaid Limited Health Service Organizations		1.75%	
5.	Commercial Self-Insurance Funds		1.60%	
6.	Group Self-Insurance Funds		1.60%	
7.	Medical Malpractice Self-Insurance		1.60%	
8.	Assessable Mutual Insurers		1.60%	
9.	Corporation Not-for-Profit Self-Insurance Funds		1.60%	
10.	Public Housing Authorities Self-Insurance Funds (see instructions)		1.60%	
11.	Annuity Premiums (Schedule II, Line 3)			
12.	Total Premium Tax Due (Add Lines 1c, 2c, 3c, and 4 through 11. Enter here and on Page 1, Line 1) →			

* If zero or less, enter -0-

SCHEDULE II **ANNUITY CONSIDERATION PREMIUMS**

	Types of Insurance	Total Premiums	Tax Rate	Tax Due
1.	Annuity Premiums		1.00%	
2.	Premium Tax Savings Derived and Credited to the "Holders" (If none, enter zero "0")			
3.	Total Annuity Premiums Due (Line 1 minus Line 2. Enter here and on Schedule I, Line 11)* →			

* If zero or less, enter -0-

SCHEDULE III **CREDITS AGAINST THE PREMIUM TAX**

1.	Workers' Compensation Administrative Assessment Credit (Schedule VI, Line 4)			
2.	Firefighters' Pension Trust Fund Credit (Schedule XII- B, Line 3, minus credit used Schedule XI, Line 6)			
3.	Municipal Police Officers' Retirement Trust Fund Credit (Schedule XIII - B, Line 3 minus credit used Schedule XI, Line 7)			
4.	Eligible Corporate Income Tax Credit (Schedule V, Line 11)			
5.	Salary Tax Credit (Schedule V, Line 12)			
6.	Florida Life and Health Insurance Guaranty Association Credit (Schedule VII, Line 1)			
7.	Community Contribution Credit (Total credits approved under s. 624.5105, F.S., minus credit used Schedule XI, Line 8) (Enter here and include on Schedule XIV, Line 12, Column A)			
8.	Capital Investment Tax Credit (Enter here and include on Schedule XIV, Line 12, Column A)			
9.	Florida Tax Credit Scholarship Program Credit (Schedule V, Line 13). (Enter here and include on Schedule XIV, Line 12, Column A)			
10.	New Markets Tax Credit (Enter here and include on Schedule XIV, Line 12, Column A)			
11.	Total Credits (Sum of Line 1 through Line 10. Enter here and on Page 1, Line 2) →			



Name _____ FEIN _____ Taxable Year _____

SCHEDULE IV COMPUTATION OF SALARY CREDIT

***** Include Your Florida Department of Revenue Forms RT-6 and RTS-71 if Claiming this Credit *****

1.	Total Premium Tax Due (Schedule I, Line 12)	
2.	Less: Firefighters' Pension Trust Fund Credit (Schedule XII - B, Line 3)	
3.	Municipal Police Officers' Retirement Trust Fund Credit (Schedule XIII - B, Line 3)	
4.	Corporate Income Tax Paid (Florida Form F-1120, Line 13)	
5.	Total (Line 1 minus Line 2 through Line 4)*	
6.	Eligible Florida Salaries (See Instructions)	
7.	Multiply Line 6 by .15	
8.	Salary Credit - (Enter the lesser of Line 5 or Line 7 here and on Schedule V, Line 4)*	→

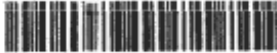
* If zero or less, enter -0-

SCHEDULE V CORPORATE INCOME, SALARY AND SFO CREDIT LIMITATION

1.	Total Corporate Income Tax Paid (Florida Form F-1120, Line 13)**	
2.	Less: Corporate Income Tax Credit Taken against Wet Marine and Transportation Insurance Tax (Schedule XI, Line 5)	
3.	Eligible Net Corporate Income Tax (Line 1 minus Line 2)	
4.	Salary Credit (Schedule IV, Line 8)	
5.	Total Premium Tax Due (Schedule I, Line 12)	
6.	Less: Workers' Compensation Administrative Assessment Credit (Schedule VI, Line 4)	
7.	Firefighters' Pension Trust Fund Credit (Schedule XII - B, Line 3)	
8.	Municipal Police Officers' Retirement Trust Fund Credit (Schedule XIII - B, Line 3)	
9.	Premium Tax Due After Deductions (Line 5 minus Lines 6 through 8)	
10.	Corporate Income Tax and Salary Credit Limitation (Multiply Line 9 by .65)	
11.	Eligible Net Corporate Income Tax Credit (Enter the lesser of Line 3 or Line 10 here and on Schedule III, Line 4)*	→
12.	Salary Tax Credit (Enter the lesser of Line 4 or the difference between Lines 10 and 11 here and on Schedule III, Line 5)* A reduction to the salary credit may be required if the election under s. 624.509(5)(a)2., F.S., applies (See Instructions).	→
13.	Florida Tax Credit Scholarship Program Credit (Enter the lesser of your 2020 eligible contributions plus carry forward credits or the result of (Schedule V, Line 9 less Lines 11 and 12) here and on Schedule III, Line 9.) Attach copies of the certificates of contribution from each nonprofit scholarship funding organization.	

* If zero or less, enter -0-

** If you filed on a consolidated basis for corporate income tax, you MUST include a schedule showing how the credit is claimed by each subsidiary.



Name _____ FEIN _____ Taxable Year _____

SCHEDULE VI WORKERS' COMPENSATION ADMINISTRATIVE ASSESSMENT CREDIT LIMITATION
***** Include Your Florida Carrier and Self Insurance Fund Quarterly Premium Reports if Claiming this Credit*****

1.	Workers' Compensation Premiums Written (Annual Statement - Florida Business, Line 16)*	
2.	Multiply Line 1 by .0175 (Self Insurers multiply by .016)	
3.	Administrative Assessments Paid to Workers' Compensation Trust Fund (Florida Carrier and Self Insurance Fund Quarterly Premium Reports must be attached)	
a.	First Quarter Assessment _____	
b.	Second Quarter Assessment _____	
c.	Third Quarter Assessment _____	
	d. Fourth Quarter Assessment _____	
	Total Administrative Assessments Paid*	
4.	Workers' Compensation Administrative Assessment Credit (Enter the lesser of Line 2 or 3 here and on Schedule III, Line 1)*	→

* If zero or less, enter -0-

SCHEDULE VII FLORIDA LIFE & HEALTH INSURANCE GUARANTY ASSOCIATION CREDIT (FLAHIGA)
***** Be Sure To Include Your FLAHIGA Certificates of Contribution if Claiming this Credit *****

Year	Total Class B and C Assessments Paid	- Refunds	= Total Assessments Paid	x Rate	= Credit Amount	Year
1983				.001		1983
1984				.001		1984
1985				.001		1985
1986				.001		1986
1987				.001		1987
1988				.001		1988
1989				.001		1989
1990				.001		1990
1991				.001		1991
1992				.001		1992
1993				.001		1993
1994				.001		1994
1995		*		.001		1995
1996				.001		1996
2000				.050		2000
2001				.050		2001
2002				.050		2002
2003				.050		2003
2004				.050		2004
2005				.050		2005
2006				.050		2006
2007				.050		2007
2008				.050		2008
2009				.050		2009
2010				.050		2010
2011				.050		2011
2012				.050		2012
2013				.050		2013
2014				.050		2014
2015				.050		2015
2016				.050		2016
2017				.050		2017
2018				.050		2018
2019				.050		2019
1.	Total FLAHIGA Credit (Enter here and on Schedule III, Line 6) ⁽¹⁾					→

* In 2002, refunds were issued by FLAHIGA from 1995 assessments. These refunds must be subtracted from the original assessments to properly calculate the amount of FLAHIGA credit.

⁽¹⁾ If zero or less, enter -0-



Name _____ FEIN _____ Taxable Year _____

SCHEDULES VIII AND IX

NOT USED

SCHEDULE X STATE FIRE MARSHAL REGULATORY ASSESSMENT TAX/SURCHARGE

	Types of Fire Premiums	Total Premiums	Fire Percentage	Taxable Premiums
1.	Fire - Residential		93%	
2.	*Fire - Commercial	*	93%	
3.	*Commercial Multiple Peril ⁽¹⁾	*	15%	
4.	*Commercial Multiple Peril - Rental Condo Units ⁽¹⁾	*	25%	
5.	*Farmowners Multiple Peril	*	15%	
6.	*Crop	*	0%	
7.	Residential Allied Lines		5%	
8.	*Commercial Allied Lines	*	5%	
9.	Homeowners Multiple Peril		25%	
10.	Ocean Marine		10%	
11.	Inland Marine		12%	
12.	Earthquake		5%	
13.	Other			
14.	Total Taxable Premiums (Sum of Line 1 through Line 13)			
15.	State Fire Marshal Tax Due (Multiply Line 14 by .01) ⁽²⁾			→
16.	*Additional Premiums Subject to Surcharge (See Instructions)			
17.	*Total Premiums Subject to Surcharge (See Instructions)			
18.	Surcharge Due (Multiply Line 17 by .001) ⁽²⁾			→
19.	Total State Fire Marshal Tax Due Plus Total Surcharge Due (Line 15 plus Line 18) (Enter here and on Page 1, Line 4)			→

(1) Report the combined total for both the "non-liability" and "liability" portions.

(2) If zero or less, enter -0-

SCHEDULE XI WET MARINE AND TRANSPORTATION TAX

1.	Net Premiums (See Instructions)	
2.	Less: Net Losses Paid	
3.	Gross Underwriting Profit (Line 1 minus Line 2)*	
4.	Wet Marine and Transportation Tax (Multiply Line 3 by .0075)	
5.	Corporate Income Tax Credit (Florida Form F-1120, Line 13. See Instructions)	
6.	Firefighters' Pension Trust Fund Credit (Schedule XII-B, Line 3. See Instructions)	
7.	Municipal Police Officers' Retirement Trust Fund Credit (Schedule XIII - B, Line 3. See Instructions)	
8.	Community Contribution Credit (Total credits approved under s. 624.5105, F.S. See Instructions)	
9.	Net Tax Due (Line 4 minus Lines 5 through 8. Enter here and on Page 1, Line 5)*	→

* If zero or less, enter -0-



Name _____ FEIN _____ Florida Code _____

SCHEDULE XII - B FIREFIIGHTERS' PENSION TRUST FUND

Code	Municipality/ Fire Control District	Total Taxable Premiums	Code	Municipality/ Fire Control District	Total Taxable Premiums
579	Longwood		836	Rockledge	
590	Lynn Haven		844	Safety Harbor	
595	Madison		846	St. Augustine	
596	Maitland		849	St. Cloud	
602	Mangonia Park		855	St. Petersburg	
603	Marathon		856	St. Pete Beach	
604	Marco Island		865	Sanford	
607	Marianna		869	Sarasota	
620	Melbourne		870	Satellite Beach	
626	Miami		871	Sea Ranch Lakes	
627	Miami Beach		874	Sebring	
640	Milton		875	Seminole	
645	Miramar		896	South Pasadena	
649	Monticello		900	Starks	
655	Mount Dora		909	Sunrise	
666	Naples		916	Tallahassee	
671	Neptune Beach		918	Tampa	
675	New Port Richey		919	Tamarac	
676	New Smyrna Beach		920	Tarpon Springs	
687	North Miami Beach		921	Tavares	
690	North Port		925	Temple Terrace	
691	North Redington Beach		926	Tequesta	
693	Oakland Park		930	Titusville	
695	Ocala		938	Valparaiso	
698	Ocean Ridge		941	Venice	
701	Ocoee		944	Vero Beach	
706	Okeechobee		946	Village of North Palm Beach	
709	Oldsmar		966	West Palm Beach	
722	Orange Park		978	Wilton Manors	
725	Orlando		980	Windermere	
728	Ormond Beach		984	Winter Garden	
736	Oviedo		985	Winter Haven	
743	Palatka		986	Winter Park	
744	Palm Bay				
746	Palm Beach Gardens				
747	Palm Beach Shores				
748	Palm Coast				
754	Panama City				
755	Panama City Beach				
761	Parkland				
770	Perrinbroke Pines				
773	Pensacola				
776	Perry				
787	Pinellas Park				
789	Plantation				
790	Plant City				
796	Pompano Beach				
801	Port Orange				
811	Punta Gorda				
816	Quincy				
824	Redington Beach				
825	Redington Shores				
831	Riviera Beach				

In addition to completing Schedule XII, you must answer Question B on Page 2.

Subtotal from Page 7 1.

Subtotal from Page 8 2.

Total Tax 3.

[Line 1 plus Line 2 times 1.85% (.0185). Enter here and on Page 1, Line 6] (If zero or less, enter 0)

Use the physical location of the property when allocating premiums to the fire control district or municipality. Do NOT use ZIP codes. For more information, see instructions.



Name _____ FEIN _____ Florida Code _____

SCHEDULE XIII - B MUNICIPAL POLICE OFFICERS' RETIREMENT TRUST FUND

Code	Municipality	Total Taxable Premiums
687	North Miami Beach	
690	North Port	
693	Oakland Park	
695	Ocala	
701	Ocoee	
706	Okeechobee	
722	Orange Park	
725	Orlando	
728	Ormond Beach	
736	Oviedo	
743	Palatka	
744	Palm Bay	
746	Palm Beach Gardens	
752	Palmetto	
754	Panama City	
755	Panama City Beach	
761	Parkland	
770	Pembroke Pines	
773	Pensacola	
776	Perry	
787	Pinellas Park	
789	Plantation	
790	Plant City	
796	Pompano Beach	
801	Port Orange	
807	Port St. Lucie	
811	Punta Gorda	
816	Quincy	
831	Riviera Beach	
836	Rockledge	
839	Royal Palm Beach	
846	St. Augustine	
849	St. Cloud	
855	St. Petersburg	
856	St. Pete Beach	
865	Sanford	
867	Sanibel	
869	Sarasota	
870	Satellite Beach	
873	Sebastian	
874	Sebring	
894	South Miami	
900	Starke	
909	Sunrise	
911	Surfside	
912	Sweetwater	
916	Tallahassee	
918	Tampa	
919	Tamarac	
920	Tarpon Springs	
921	Tavares	
925	Temple Terrace	

Code	Municipality	Total Taxable Premiums
926	Tequesta	
930	Titusville	
936	Umatilla	
938	Valparaiso	
941	Venice	
944	Vero Beach	
946	Village of North Palm Beach	
947	Village of Palm Springs	
954	Wauchula	
963	West Melbourne	
966	West Palm Beach	
976	Williston	
978	Wilton Manors	
984	Winter Garden	
985	Winter Haven	
986	Winter Park	

In addition to completing Schedule XIII, you must answer Question B on Page 2.

Subtotal from Page 91.

Subtotal from Page 102.

Total Tax3.

[Line 1 plus Line 2 times .85% (.0085).

Enter here and on Page 1, Line 7] (If zero or less, enter 0)

Use the physical location of the property when allocating premiums. Do NOT use ZIP codes. For more information, see instructions.



Name _____ FEIN _____ Taxable Year _____

SCHEDULE XIV RETALIATORY TAX COMPUTATION

		Column A State of Florida*	Column B State of Incorporation*
1.	Net Premium Tax Due (Page 1, Line 3 plus Line 5. See note below)		
2.	90% of Salary Tax Credit Taken (Page 3, Schedule III, Line 5)		
3.	Total Corporate Income Tax (See note below)		
4.	Intentionally Left Blank		
5.	Firefighters' Pension Trust Fund		
6.	Municipal Police Officers' Retirement Trust Fund		
7.	Florida Insurance Guaranty Association (FIGA) (Assessments on the Property Portion of Insurance Premiums only)		
8.	Fire Marshal Taxes		
9.	Annual and Quarterly Statement Filing Fees		
10.	Annual License Tax and Certificate of Authority		
11.	Agents' Fees		
12.	Other Taxes and Fees (Include Schedule)		
13.	Workers' Compensation Credit		
14.	Total (Sum of Lines 1 through Line 13)		
15.	Retaliatory Tax Due [Line 14, Column B (State of Incorporation) minus Line 14, Column A (State of Florida). Enter here and on Page 1, Line 8.]* →		

NOTE: Compute Column B using the state of incorporation's tax law to determine tax owed using Florida premiums, personnel, and property. Attach all applicable returns and schedules.

* If zero or less, enter -0-

SCHEDULE XV NOT USED

SCHEDULE XVI SURCHARGE ON COMMERCIAL/RESIDENTIAL POLICIES

Type of Policy	Policies Subject to Surcharge (sum of 4 quarters)	Rate	Surcharge Due
A. Commercial		X \$ 4.00	A.
B. Residential		X \$ 2.00	B.
Total Surcharge Due for the Calendar Year (Total A + B). *Enter here and include on Page 1, Line 10 with total from Schedule XVII. →			

* The Total Surcharge Due should be greater than the sum of the first three quarters reported on Forms DR-907.

SCHEDULE XVII PAYMENT DUE FROM FLORIDA LIFE AND HEALTH INSURANCE GUARANTY ASSOCIATION (FLAHIGA) REFUND

1. Total payment due from FLAHIGA refunds received this year, if any, and previously claimed as credit. Enter here and include on Page 1, Line 10 with total from Schedule XVI. (See instructions) →	
--	--

References

The following documents were mentioned in this form and are incorporated by reference in the rules indicated below.
The forms are available online at floridarevenue.com/forms.

Form RT-6	Employer's Quarterly Report	Rule 73B-10.037, F.A.C.
Form RTS-71	Quarterly Concurrent Employment Report	Rule 73B-10.037, F.A.C.
Form F-1120	Florida Corporate Income/Franchise Tax Return	Rule 12C-1.051, F.A.C.
Form DR-907	Florida Insurance Premium Installment Payment	Rule 12B-8.003, F.A.C.



2017 Insurance Premium Tax Information for Schedules XII and XIII, Form DR-908

DR-350900
R. 01/18

Rule 12D-8.003
Florida Administrative Code
Effective 01/18

The Department of Revenue has created a database that insurers may use in assigning premiums and policies to the various participating local taxing jurisdictions. It is available for free at

<https://pointmatch.floridarevenue.com/Default.aspx>. This database was created pursuant to sections (ss.) 175.1015 and 185.085, Florida Statutes (F.S.). In addition to completing Schedules XII and XIII, you must answer Question B on Form DR-908, Page 2, about your use of the Department's database.

These statutes provide that insurers who exercise due diligence in using the Department's database to assign premiums to the participating local taxing jurisdictions shall be held harmless from any liability, including but not limited to liability for taxes, interest, or penalties that would otherwise be due as a result of an assignment of premiums to an incorrect local taxing jurisdiction. Sections 175.1015 and 185.085, F.S., specify that insurance companies that do not use the electronic database provided by the Department and do not exercise due diligence in applying the electronic database, are subject to a .5 percent (.005) penalty on the total premium per policy that is improperly assigned.

We review the figures reported on Schedules XII and XIII of your 2017 *Insurance Premium Taxes and Fees Return* (Form DR-908). **You should include a written explanation with your return if a significant variance exists between the figures reported on your 2016 and 2017 returns. A significant variance is considered an increase or decrease of greater than 10 percent for any municipality or fire control district.**

Your explanation should contain specific information. All explanations are subject to review by the Department of Management Services and the Department of Financial Services. Generally, more precise information than explanations such as "shift of business" or "business transfers" is required. If you are not sure your explanation will be acceptable, call the Department of Management Services at 850-922-0667.

Give careful attention to the amounts reported on Schedules XII and XIII. The monies reported by your company for each of these cities and districts fund retirement benefits for their

police officers and firefighters. The money is distributed back to each local taxing jurisdiction based on the information reported.

When completing Schedules XII and XIII:

- ✓ Report premiums based on the actual physical location of the property.
- ✓ Do not use ZIP codes to report premiums as they may not identify the appropriate city or district and can result in an inaccurate allocation of premiums.

Premiums must be reported accurately and timely. The Department of Financial Services, in Informational Memorandum 99-111M, reminded insurers authorized to write property and casualty insurance in the State of Florida of the requirements contained in Chapters 175 and 185, F.S. Insurers are required to keep an accurate account of all premiums sold within the city limits or fire control district boundaries for those cities and districts listed on Schedules XII and XIII. Each risk required to be reported to the Department of Revenue must be coded with the proper identifying fire district or municipality code in order for the Department of Management Services to accurately distribute premium tax allocations to the participating pension funds. Sections 175.151 and 185.13, F.S., provide that an insurer's certificate of authority may be cancelled or revoked if an insurer fails to comply with the provisions of Chapters 175 and 185, F.S.

(Continued on back)

2017 Additions, Deletions, and Changes to Schedules XII and XIII

Code	City/District	Changes			
		County	Type		
-----	N	O	N	E	-----

.....

Chapters 175 and 185, F.S., taxes are administered by three different state agencies:

- The Florida Department of Financial Services, Office of Insurance Regulation has the authority to impose the .5 percent (.005) penalty relating to the address database and insured risks not properly assigned to participating local taxing jurisdictions.
- The Florida Department of Management Services, Division of Retirement, Municipal Police Officers' and Firefighters' Retirement Trust Funds Office:
 - Administers the retirement trust funds.
 - Distributes monies to the local taxing jurisdictions.
 - Notifies the Office of Insurance Regulation when insurers fail to comply.
- The Florida Department of Revenue:
 - Administers the database.
 - Produces, distributes, and processes the insurance premium tax forms.
 - Collects Chapters 175 and 185, F.S., taxes on Forms DR-907 and DR-908.
 - Contacts insurers when there is a variance in reported premiums between the current year and prior year for the local taxing jurisdictions. This review helps ensure that the proper amount(s) are reported by the insurer to the proper local taxing jurisdictions.

Need Assistance?

Information and forms are available on our website at: www.floridarevenue.com

If you have any questions, contact Taxpayer Services at 850-488-6800, Monday through Friday (excluding holidays).

For a written reply to tax questions, write:

Taxpayer Services - MS 3-2000
Florida Department of Revenue
5050 W Tennessee St
Tallahassee FL 32399-0112

Get the Latest Tax Information

Sign up to get email notices automatically when we post:

- Tax Information Publications (TIPs).
- Proposed rules, notices of rule development workshops, and more.

Sign up at: www.floridarevenue.com

Types of Premiums subject to Form DR-908 Schedules XII (Firefighters' Pension Trust Funds) and XIII (Police Officers' Retirement Trust Funds)		
Annual Statement Line Number & Line of Business	Premiums Subject to Firefighters' Pension Trust Fund (DR-908, Schedule XII)	Premiums Subject to Police Officers' Retirement Trust Fund (DR-908, Schedule XIII)
1 Fire	YES	
2.1 Allied Lines	YES	
3 Farmowners multiple peril	YES (70%)	YES (30%)
4 Homeowners multiple peril	YES (70%)	YES (30%)
5.1 Commercial multiple peril (non-liability portion)	YES (70%)	YES (30%)
5.2 Commercial multiple peril (liability portion)	YES (70%)	YES (30%)
12 Earthquake	YES	
19.1 Private passenger auto no-fault (personal injury protection)		YES
19.2 Other private passenger auto liability		YES
19.3 Commercial auto no-fault (personal injury protection)		YES
19.4 Other commercial auto liability		YES
21.1 Private passenger auto physical damage		YES
21.2 Commercial auto physical damage		YES
22 Aircraft (all perils)	YES	
23 Fidelity		YES
26 Burglary and theft		YES
34 Aggregate write-ins for other lines of business (meeting the definition of property insurance in s. 624.604, F.S.).	YES	

Florida Statutes

fund wherein such firefighter is employed. No firefighter shall have any right to the money so paid into the fund except as provided in this chapter.

(c) By all fines and forfeitures imposed and collected from any firefighter because of the violation of any rule and regulation promulgated by the board of trustees.

(d) By mandatory payment by the municipality or special fire control district of a sum equal to the normal cost of and the amount required to fund any actuarial deficiency shown by an actuarial valuation conducted under part VII of chapter 112 after taking into account the amounts described in paragraphs (b), (c), (e), (f), and (g) and the tax proceeds described in paragraph (a) which are used to fund benefits in a defined benefit plan component.

(e) By all gifts, bequests, and devises when donated to the fund.

(f) By all accretions to the fund by way of interest or dividends on bank deposits, or otherwise.

(g) By all other sources or income now or hereafter authorized by law for the augmentation of such firefighters' pension trust fund.

(2) Member contribution rates may be adjusted as follows:

(a) The employing municipality or special fire control district, by local ordinance or resolution, may elect to make an employee's contributions. However, under no circumstances may a municipality or special fire control district reduce the member contribution to less than one-half of 1 percent of salary.

(b) Firefighter member contributions may be increased by consent of the members' collective bargaining representative or, if none, by majority consent of firefighter members of the fund.

Nothing in this section shall be construed to require adjustment of member contribution rates in effect on the date this act becomes a law, including rates that exceed 5 percent of salary, provided that such rates are at least one-half of 1 percent of salary.

*History.—*s. 1, ch. 63-248; s. 1, ch. 65-56; s. 1, ch. 67-218; s. 5, ch. 81-168; s. 5, ch. 88-41; s. 18, ch. 93-193; s. 7, ch. 97-96; s. 7, ch. 99-1; s. 6, ch. 2011-216; s. 5, ch. 2015-38.

175.101 State excise tax on property insurance premiums authorized; procedure.—For any municipality, special fire control district, chapter plan, local law municipality, local law special fire control district, or local law plan under this chapter:

(1) Each municipality or special fire control district in this state described and classified in s. 175.041, having a lawfully established firefighters' pension trust fund or municipal fund or special fire control district fund, by whatever name known, providing pension benefits to firefighters as provided under this chapter, may assess and impose on every insurance company, corporation, or other insurer now engaged in or

carrying on, or who shall hereinafter engage in or carry on, the business of property insurance as shown by the records of the Office of Insurance Regulation of the Financial Services Commission, an excise tax in addition to any lawful license or excise tax now levied by each of the municipalities or special fire control districts, respectively, amounting to 1.85 percent of the gross amount of receipts of premiums from policyholders on all premiums collected on property insurance policies covering property within the corporate limits of such municipalities or within the legally defined boundaries of special fire control districts, respectively. Whenever the boundaries of a special fire control district that has lawfully established a firefighters' pension trust fund encompass a portion of the corporate territory of a municipality that has also lawfully established a firefighters' pension trust fund, that portion of the tax receipts attributable to insurance policies covering property situated both within the municipality and the special fire control district shall be given to the fire service provider. For the purpose of this section, the boundaries of a special fire control district include an area that has been annexed until the completion of the 4-year period provided for in s. 171.093(4), or other agreed-upon extension, or if a special fire control district is providing services under an interlocal agreement executed in accordance with s. 171.093(3). The agent shall identify the fire service provider on the property owner's application for insurance. Remaining revenues collected pursuant to this chapter shall be distributed to the municipality or special fire control district according to the location of the insured property.

(2) In the case of multiple peril policies with a single premium for both the property and casualty coverages in such policies, 70 percent of such premium shall be used as the basis for the 1.85-percent tax.

(3) This excise tax shall be payable annually on March 1 of each year after the passage of an ordinance, in the case of a municipality, or resolution, in the case of a special fire control district, assessing and imposing the tax authorized by this section. Installments of taxes shall be paid according to the provision of s. 624.5092(2)(a), (b), and (c).

This section also applies to any municipality consisting of a single consolidated government which is made up of a former county and one or more municipalities, consolidated pursuant to the authority in s. 3 or s. 6(e), Art. VIII of the State Constitution, and to property insurance policies covering property within the boundaries of the consolidated government, regardless of whether the properties are located within one or more separately incorporated areas within the consolidated government, provided the properties are being provided fire protection services by the consolidated government. This section also applies to

any municipality, as provided in s. 175.041(3)(c), which has entered into an interlocal agreement to receive fire protection services from another municipality participating under this chapter. The excise tax may be levied on all premiums collected on property insurance policies covering property located within the corporate limits of the municipality receiving the fire protection services, but will be available for distribution to the municipality providing the fire protection services.

History.—s. 1, ch. 83-249; s. 2, ch. 87-218; ss. 13, 35, ch. 89-106; s. 6, ch. 81-168; s. 6, ch. 86-41; s. 23, ch. 87-99; s. 14, ch. 88-206; s. 10, ch. 89-167; s. 19, ch. 93-193; s. 8, ch. 99-1; s. 2, ch. 2002-29; s. 161, ch. 2003-261; s. 3, ch. 2005-205; s. 6, ch. 2009-97.

175.1015 Determination of local premium tax situs.—

(1)(a) Any insurance company that is obligated to report and remit the excise tax on property insurance premiums imposed under s. 175.101 shall be held harmless from any liability, including, but not limited to, liability for taxes, interest, or penalties that would otherwise be due solely as a result of an assignment of an insured property to an incorrect local taxing jurisdiction if the insurance company exercises due diligence in applying an electronic database provided by the Department of Revenue under subsection (2). Insurance companies that do not use the electronic database provided by the Department of Revenue or that do not exercise due diligence in applying the electronic database for tax years on or after January 1, 2006, are subject to a 0.5 percent penalty on the portion of the premium pertaining to any insured risk that is improperly assigned, whether assigned to an improper local taxing jurisdiction, not assigned to a local taxing jurisdiction when it should be assigned to a local taxing jurisdiction, or assigned to a local taxing jurisdiction when it should not be assigned to a local taxing jurisdiction.

(b) Any insurance company that is obligated to report and remit the excise tax on commercial property insurance premiums imposed under s. 175.101 and is unable, after due diligence, to assign an insured property to a specific local taxing jurisdiction for purposes of complying with paragraph (a) shall remit the excise tax on commercial property insurance premiums using a methodology of apportionment in a manner consistent with the remittance for the 2004 calendar year. An insurance company which makes two contacts with the agent responsible for a commercial property insurance application for the purpose of verifying information on the application necessary for the assignment to the appropriate taxing jurisdiction shall be considered to have exercised due diligence. Any insurance company which complies with the provisions of this paragraph shall not be subject to the penalty provided in paragraph (a).

(2)(a) The Department of Revenue shall, subject to legislative appropriation, create as soon as practical

and feasible, and thereafter shall maintain, an electronic database that conforms to any format approved by the American National Standards Institute's Accredited Standards Committee X12 and that designates for each street address and address range in the state, including any multiple postal street addresses applicable to one street location, the local taxing jurisdiction in which the street address and address range is located, and the appropriate code for each such participating local taxing jurisdiction, identified by one nationwide standard numeric code. The nationwide standard numeric code must contain the same number of numeric digits, and each digit or combination of digits must refer to the same level of taxing jurisdiction throughout the United States and must be in a format similar to FIPS 55-3 or other appropriate standard approved by the Federation of Tax Administrators and the Multistate Tax Commission. Each address or address range must be provided in standard postal format, including the street number, street number range, street name, and zip code. Each year after the creation of the initial database, the Department of Revenue shall annually create and maintain a database for the current tax year. Each annual database must be calendar-year specific.

(b)1. Each participating local taxing jurisdiction shall furnish to the Department of Revenue all information needed to create the electronic database as soon as practical and feasible. The information furnished to the Department of Revenue must specify an effective date.

2. Each participating local taxing jurisdiction shall furnish to the Department of Revenue all information needed to create and update the current year's database, including changes in annexations, incorporations, and reorganizations and any other changes in jurisdictional boundaries, as well as changes in eligibility to participate in the excise tax imposed under this chapter. The information must specify an effective date and must be furnished to the Department of Revenue by July 1 of the current year.

3. The Department of Revenue shall create and update the current year's database in accordance with the information furnished by participating local taxing jurisdictions under subparagraph 1. or subparagraph 2., as appropriate. To the extent practicable, the Department of Revenue shall post each new annual database on a website by September 1 of each year. Each participating local taxing jurisdiction shall have access to this website and, within 30 days thereafter, shall provide any corrections to the Department of Revenue. The Department of Revenue shall finalize the current year's database and post it on a website by November 1 of the current year. If a dispute in jurisdictional boundaries cannot be resolved so that changes in boundaries may be included, as

appropriate, in the database by November 1, the changes may not be retroactively included in the current year's database and the boundaries will remain the same as in the previous year's database. The finalized database must be used in assigning policies and premiums to the proper local taxing jurisdiction for the insurance premium tax return due on the following March 1 for the tax year 2005. For subsequent tax years, the finalized database must be used in assigning policies and premiums to the proper local taxing jurisdiction for the insurance premium tax return due for the tax year beginning on or after the January 1 following the website posting of the database. Information contained in the electronic database is conclusive for purposes of this chapter. The electronic database is not an order, a rule, or a policy of general applicability.

4. Each annual database must identify the additions, deletions, and other changes to the preceding version of the database.

(3)(a) As used in this section, the term "due diligence" means the care and attention that is expected from and is ordinarily exercised by a reasonable and prudent person under the circumstances.

(b) Notwithstanding any law to the contrary, an insurance company is exercising due diligence if the insurance company complies with the provisions of paragraph (1)(b) or if the insurance company assigns an insured's premium to local taxing jurisdictions in accordance with the Department of Revenue's annual database and with respect to such database:

1. Expends reasonable resources to accurately and reliably implement such method;
2. Maintains adequate internal controls to correctly include in its database of policyholders the location of the property insured, in the proper address format, so that matching with the department's database is accurate; and
3. Corrects errors in the assignment of addresses to local taxing jurisdictions within 120 days after the insurance company discovers the errors.

(4) There is annually appropriated from the moneys collected under this chapter and deposited in the Police and Firefighter's Premium Tax Trust Fund an amount sufficient to pay the expenses of the Department of Revenue in administering this section, but not to exceed \$50,000 annually, adjusted annually by the lesser of a 5-percent increase or the percentage of growth in the total collections.

(5) The Department of Revenue shall adopt rules necessary to administer this section, including rules establishing procedures and forms.

(6) Any insurer that is obligated to collect and remit the tax on property insurance imposed under s. 175.101 shall be held harmless from any liability, including, but not limited to, liability for taxes, interest,

or penalties that would otherwise be due solely as a result of an assignment of an insured property to an incorrect local taxing jurisdiction, based on the collection and remission of the tax accruing before January 1, 2005, if the insurer collects and reports this tax consistent with filings for periods before January 1, 2005. Further, any insurer that is obligated to collect and remit the tax on property insurance imposed under this section is not subject to an examination under s. 624.316 or s. 624.3161 which would occur solely as a result of an assignment of an insured property to an incorrect local taxing jurisdiction, based on the collection and remission of such tax accruing before January 1, 2005.

History.—s. 2, ch. 2004-21.

175.111 Certified copy of ordinance or resolution filed; insurance companies' annual report of premiums; duplicate files; book of accounts.—For any municipality, special fire control district, chapter plan, local law municipality, local law special fire control district, or local law plan under this chapter, whenever any municipality passes an ordinance or whenever any special fire control district passes a resolution establishing a chapter plan or local law plan assessing and imposing the taxes authorized in s. 175.101, a certified copy of such ordinance or resolution shall be deposited with the division. Thereafter every insurance company, association, corporation, or other insurer carrying on the business of property insurance on real or personal property, on or before the succeeding March 1 after date of the passage of the ordinance or resolution, shall report fully in writing and under oath to the division and the Department of Revenue a just and true account of all premiums by such insurer received for property insurance policies covering or insuring any real or personal property located within the corporate limits of each such municipality or special fire control district during the period of time elapsing between the date of the passage of the ordinance or resolution and the end of the calendar year. The report shall include the code designation as prescribed by the division for each piece of insured property, real or personal, located within the corporate limits of each municipality and within the legally defined boundaries of each special fire control district. The aforesaid insurer shall annually thereafter, on March 1, file with the Department of Revenue a similar report covering the preceding year's premium receipts, and every such insurer at the same time of making such reports shall pay to the Department of Revenue the amount of the tax hereinbefore mentioned. Every insurer engaged in carrying on such insurance business in the state shall keep accurate books of accounts of all such business done by it within the corporate limits of each such municipality and within the legally defined boundaries

of each such special fire control district, and in such manner as to be able to comply with the provisions of this chapter. Based on the insurers' reports of premium receipts, the division shall prepare a consolidated premium report and shall furnish to any municipality or special fire control district requesting the same a copy of the relevant section of that report.

History.—s. 1, ch. 63-249; ss. 12, 13, 35, ch. 69-106; s. 1, ch. 75-240; s. 20, ch. 93-193; s. 1, ch. 95-250; s. 9, ch. 99-1; s. 6, ch. 2000-355.

s. 175.131

receive from such fund the amount determined under s. 175.121, in excess of one-half of the excise tax, not to exceed 6 percent of its fire department payroll. Payroll amounts of members included in the Florida Retirement System shall not be included.

History.—s. 1, ch. 67-217; s. 7, ch. 81-168; s. 22, ch. 93-193; s. 11, ch. 99-1.

175.131 Funds received by municipality or special fire control district; deposit in firefighters' pension trust fund.—For any municipality, special fire control district, chapter plan, local law municipality, local law special fire control district, or local law plan under this chapter, all state and other funds received by any municipality or special fire control district under the provisions of this chapter shall be deposited by such municipality or special fire control district immediately, and under no circumstances more than 5 days after receipt, with the board of trustees. In lieu thereof, the municipality or special fire control district may provide authorization to the division for the direct payment of the premium tax to the board of trustees. The board shall deposit such moneys in the Firefighters' Pension Trust Fund immediately, and under no circumstances more than 5 days after receipt. Employee contributions, however, which are withheld by the employer on behalf of an employee member shall be deposited immediately after each pay period with the board of trustees of the firefighters' pension trust fund. Employer contributions shall be deposited at least quarterly.

History.—s. 1, ch. 63-249; s. 8, ch. 81-168; s. 8, ch. 86-41; s. 23, ch. 93-193; s. 12, ch. 99-1.

175.141 Payment of excise tax credit on similar state excise or license tax.—The tax herein authorized to be imposed by each municipality and each special fire control district shall in nowise be in addition to any similar state excise or license tax imposed by part IV of chapter 624, but the payor of the tax hereby authorized shall receive credit therefor on his or her said state excise or license tax and the balance of said state excise or license tax shall be paid to the Department of Revenue as provided by law.

History.—s. 1, ch. 63-249; s. 9, ch. 86-41; s. 24, ch. 93-193; s. 922, ch. 95-147; s. 13, ch. 99-1.

175.151 Penalty for failure of insurers to comply with this act.—If any insurance company, corporation or other insurer fails to comply with the provisions of this act, on or before March 1 of each year as herein provided, the certificate of authority issued to said insurance company, corporation or other insurer to transact business in this state may be canceled and revoked by the Office of Insurance Regulation of the Financial Services Commission, and it is unlawful for any such insurance company, corporation, or other insurer to transact business

municipality or special fire control district and its pension fund to participate in the distribution of premium tax moneys under this chapter, all the provisions shall be complied with annually, including state acceptance pursuant to part VII of chapter 112.

(3)(a) All moneys not distributed to municipalities and special fire control districts under this section as a result of the limitation on disbursement contained in s. 175.122, or as a result of any municipality or special fire control district not having qualified in any given

F.S. 2021

thereafter in this state unless such insurance company, corporation, or other insurer shall be granted a new certificate of authority to transact any business in this state, in compliance with provisions of law authorizing such certificate of authority to be issued. The division is responsible for notifying the Office of Insurance Regulation regarding any such failure to comply.

History.—s. 1, ch. 63-249; ss. 13, 35, ch. 69-106; s. 14, ch. 99-1; s. 163, ch. 2003-261.

175.162 Requirements for retirement.—For any municipality, special fire control district, chapter plan, local law municipality, local law special fire control district, or local law plan under this chapter, any firefighter who completes 10 or more years of creditable service as a firefighter and attains age 55, or completes 25 years of creditable service as a firefighter and attains age 52, and who for such minimum period has been a member of the firefighters' pension trust fund operating under a chapter plan or local law plan, is eligible for normal retirement benefits. Normal retirement under the plan is retirement from the service of the municipality or special fire control district on or after the normal retirement date. In such event, payment of retirement income will be governed by the following provisions of this section:

(1) The normal retirement date of each firefighter will be the first day of the month coincident with or next following the date on which he or she has completed 10 or more years of creditable service and attained age 55 or completed 25 years of creditable service and attained age 52.

(2)(a)1. The amount of monthly retirement income payable to a full-time firefighter who retires on or after his or her normal retirement date shall be an amount equal to the number of his or her years of credited service multiplied by 2.75 percent of his or her average final compensation as a full-time firefighter.

2. Effective July 1, 2015, a plan that is in compliance with this chapter except that the plan provides a benefit that is less than 2.75 percent of the average final compensation of a full-time firefighter for all years of credited service or provides an effective benefit that is less than 2.75 percent as a result of a maximum benefit limitation:

a. Must maintain, at a minimum, the percentage amount or maximum benefit limitation in effect on July 1, 2015, and is not required to increase the benefit to 2.75 percent of the average final compensation of a full-time firefighter for all years of credited service; or

b. If the plan changes the percentage amount or maximum benefit limitation to 2.75 percent or more of the average final compensation of a full-time firefighter for all years of credited service, the plan may not thereafter decrease the percentage amount or maximum benefit limitation to less than 2.75 percent of